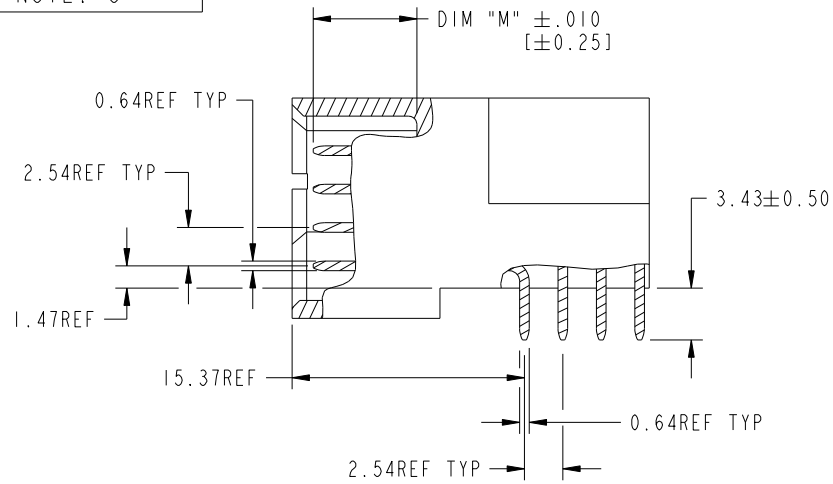


Tous droits strictement réservés. Reproduction ou communication a des tiers interdite sous quelque forme que ce soit sans autorisation écrite du propriétaire. Propriété de c.FCI. Droits de reproduction FCI.

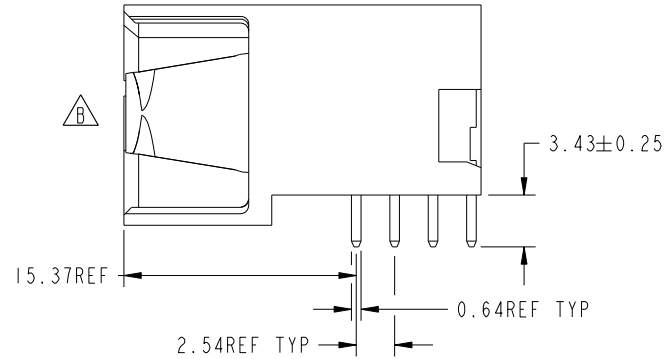
All rights strictly reserved. Reproduction or issue to third parties in any form whatever is not permitted without written authority from the proprietor. Property of FCI. Copyright FCI.



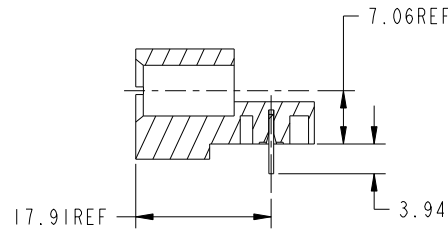
PRODUCT NUMBER
51939-291__
NOTE: 3



BROKEN-OUT SECTION A-A
SCALE 2:1



BROKEN-OUT SECTION B-B
SCALE 2:1



SECTION C-C

mat'l code		SEE NOTE 2		tolerances unless otherwise specified		CUSTOMER		 www.fciconnect.com	
ltr	ecn no.	dr	date	linear	0.X ±0.3	COPY		title	
B				linear	0.XX ±0.13	projection		44S + 18P	
				angles	0.XXX ±0.051			RIGHT ANGLE SOLDER HEADER	
				angles	0° ±2°			product family	
				dr	JM GUO 05/15/07	MM		PwrBlade	
				enr	RYAN YUAN 05/15/07			code	
				chr	GARY HSIEH 05/15/07	1:1		213	
				appd	JOSEPH HSIA 05/15/07			sheet	
sheet index		revision sheet						A 51939-291	
								2 of 4	

cage code 28506

Pro/E

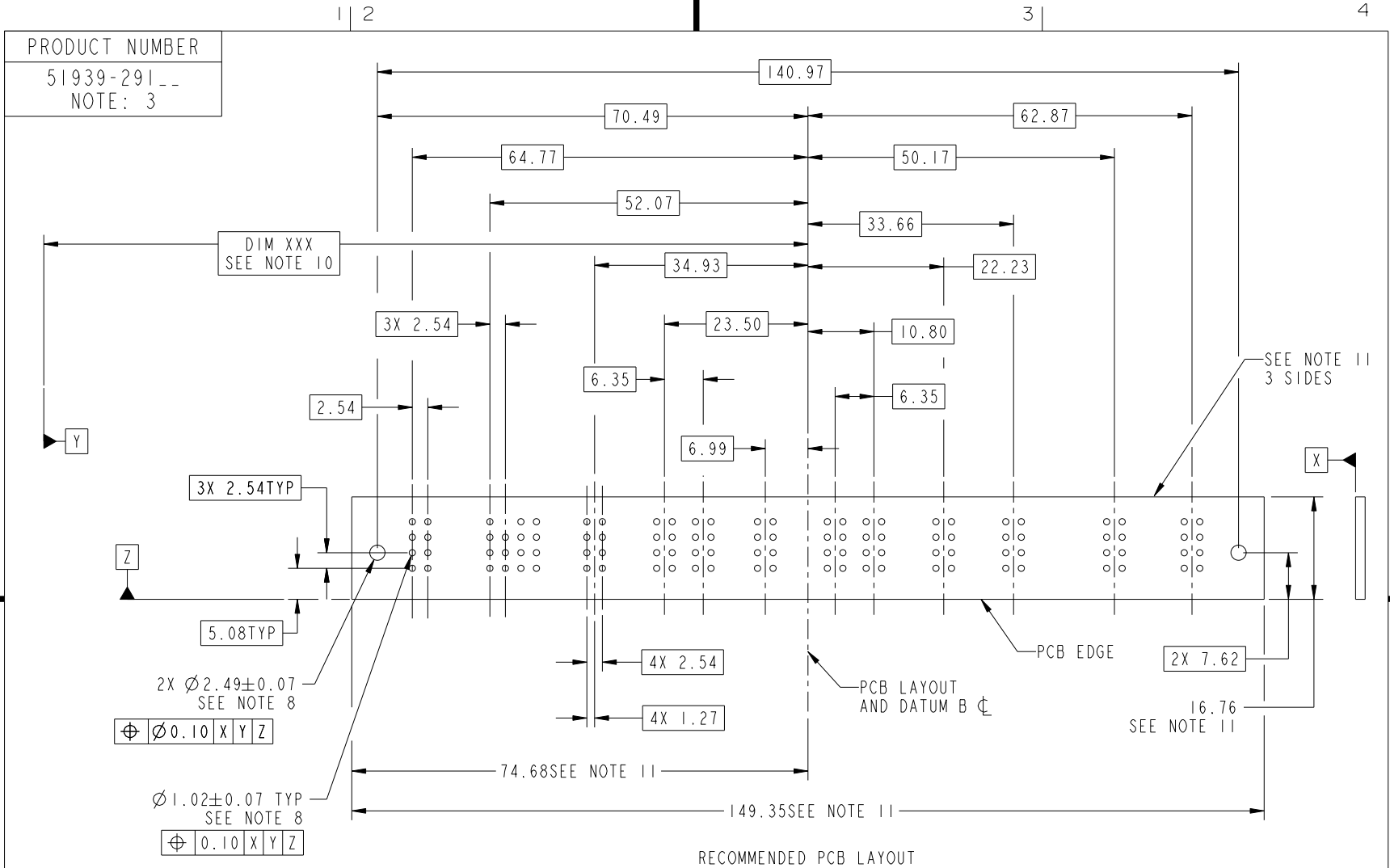
PDM: Rev:B

STATUS: Released

Printed: Dec 20, 2010

Tous droits strictement réservés. Reproduction ou communication a des tiers interdite sous quelque forme que ce soit sans autorisation écrite du propriétaire. Propriété de c.FCI. Droits de reproduction FCI.

All rights strictly reserved. Reproduction or issue to third parties in any form whatever is not permitted without written authority from the proprietor. Property of FCI. Copyright FCI.



mat'l code		SEE NOTE 2		tolerances unless otherwise specified		CUSTOMER		 www.fciconnect.com	
ltr	ecn no.	dr	date	linear	0.X ±0.3	COPY		title	
B				linear	0.XX ±0.13	projection		44S + 18P	
				angles	0.XXX ±0.051			RIGHT ANGLE SOLDER HEADER	
				dr	0° ±2°	MM		product family	
				enr	JM GUO 05/15/07	scale		PwrBlade	
				chr	RYAN YUAN 05/15/07	1:1		code	
				appd	GARY HSIEH 05/15/07			213	
					JOSEPH HSIA 05/15/07			sheet	
sheet index	revision sheet							3 of 4	
								cage code	
								22506	

Tous droits strictement réservés. Reproduction ou communication a des tiers interdite sous quelque forme que ce soit sans autorisation écrite du propriétaire. Propriété de c.FCI. Droits de reproduction FCI.

All rights strictly reserved. Reproduction or issue to third parties in any form whatever is not permitted without written authority from the proprietor. Property of FCI. Copyright FCI.



1 | 2

3

4

PRODUCT NUMBER

51939-291__
NOTE: 3

NOTES:

1. DIMENSIONS AND TOLERANCES ARE IN ACCORDANCE WITH ASME Y14.5M, 1994 UNLESS OTHERWISE SPECIFIED.

CONNECTOR NOTES:

- ② HOUSING MATERIAL: UL 94 V-0 GLASS FILLED HIGH-TEMP THERMOPLASTIC
POWER CONTACT MATERIAL: COPPER ALLOY
SIGNAL PIN MATERIAL: COPPER ALLOY
 - ⚠ ③ SEE ITEM 1 & 2 IN PRINT 10064183 FOR PLATING SPEC OF 51939-291 AND 51939-291LF RESPECTIVELY.
 - ④ MANUFACTURER'S NAME, P/N, AND DATE CODE TO APPEAR ON THIS SURFACE.
 - 5. PRODUCT SPECIFICATION GS-12-149.
APPLICATION SPECIFICATION BUS-20-067.
 - 6. PACKAGED IN TRAYS.
- PCB NOTES:
- 7. ALL HOLE DIAMETERS ARE FINISHED HOLE SIZE.
 - ⑧ MOUNTING HOLES, WHERE APPLICABLE, ARE UNPLATED.
 - ⑨ $\varnothing 1.151 \pm 0.025$ DRILLED HOLES PLATED WITH
0.008 MIN SnPb OR Sn OVER 0.03 TO 0.08 Cu PLATING TO ACHIEVE $\varnothing 1.02 \pm .07$ HOLE.
 - ⑩ "DIM XXX" TO BE DETERMINED BY THE CUSTOMER.
 - ⑪ CONNECTOR KEEP-OUT ZONE.
 - 12. ⚠ SYMBOL WILL BE NEXT TO ANY DIMENSION, VIEW, OR NOTE WHICH HAS BEEN MODIFIED WITH THE CURRENT DRAWING REVISION.

mat'l code				SEE NOTE 2		tolerances unless otherwise specified		CUSTOMER		FCI	
ltr	ecm no.	dr	date	linear	0.X ±0.3		COPY		www.fciconnect.com		
B					0.XX ±0.13		projection		title 44S + 18P		
					0.XXX ±0.051		⊕ ↗		RIGHT ANGLE SOLDER HEADER		
				angles	0° ±2°		MM		product family PwrBlade		code
				dr	JM GUO	05/15/07	← →		size	dwg no	213
				engr	RYAN YUAN	05/15/07	scale		A	51939-291	sheet
				chr	GARY HSIEH	05/15/07	1:1		4 of 4		
				appd	JOSEPH HSIA	05/15/07					
sheet index	revision sheet										

1 | 2

Pro/E

PDM: Rev:B

STATUS: Released

Printed: Dec 20, 2010