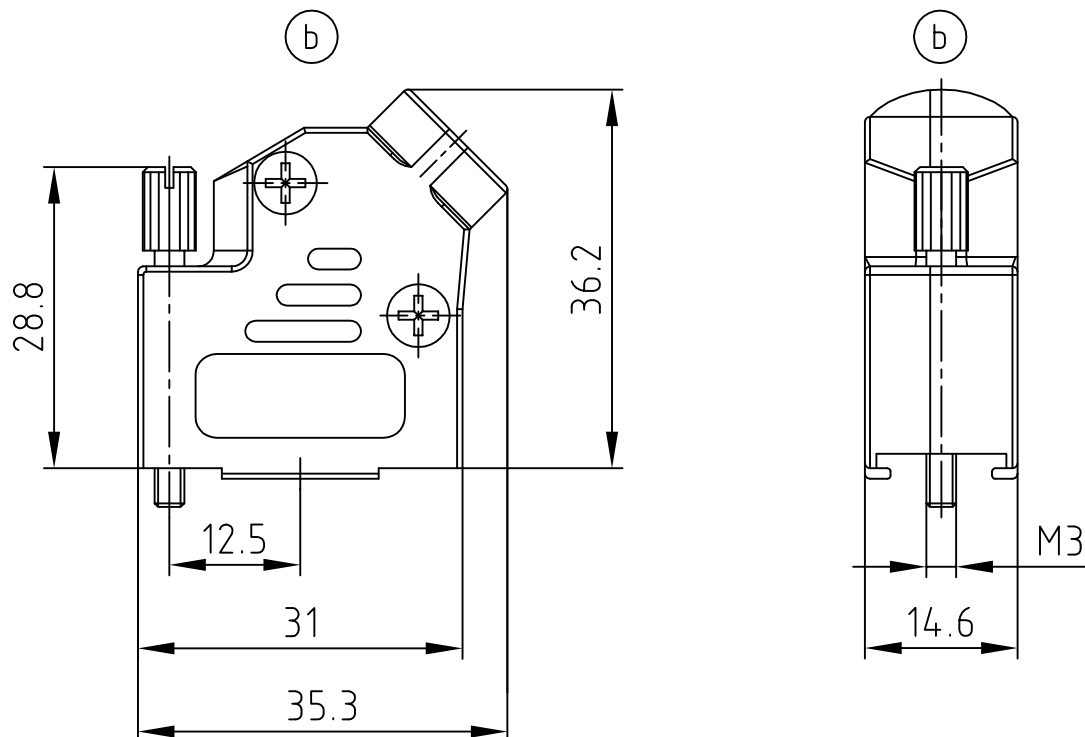
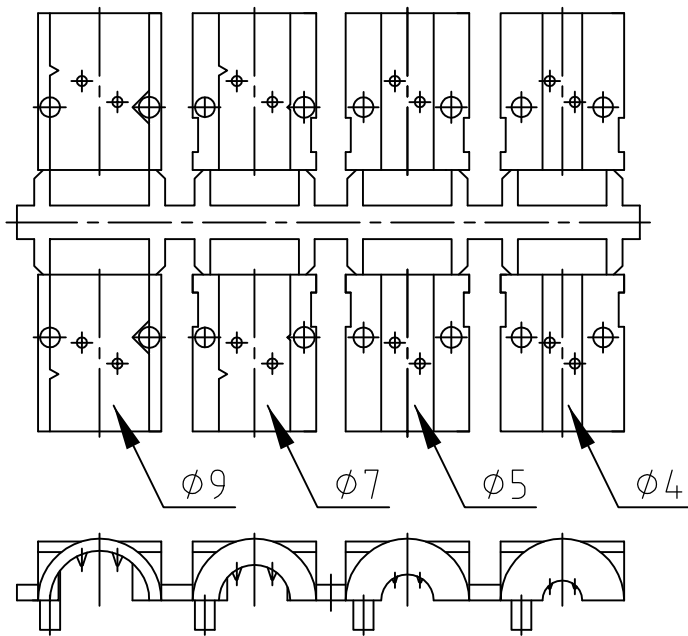


used for: D-SUB



(b) Strain relief



(b) TECHNICAL DATA:

1. BACKSHELL HALVES: ZINC DIE-CAST; NICKEL PLATED
2. ASSEMBLY SCREWS: STEEL; TIN PLATED
3. JACK SCREW: STEEL; TIN PLATED
4. CABLE STRAIN RELIEF: PC
5. TEMPERATURE RANGE: -40°C to $+120^{\circ}\text{C}$
6. ATTENUATION FACTOR: $>40\text{dB}$ BETWEEN 30 MHz AND 2 GHz
7. ASSEMBLY INSTRUCTION SEE SHEET 2

Directive 2002/95/EC RoHS compliant

THIS DRAWING MAY NOT BE COPIED OR REPRODUCED IN ANY WAY, AND MAY NOT BE PASSED ON TO A THIRD PARTY WITHOUT WRITTEN PERMISSION.
 OWNERSHIP AND COPYRIGHT OF CONEC GmbH
 DO NOT ALTER CAD DRAWING BY HAND

| | | | | | | | | | |
|-------|-------------|------------|---------|-----------|--------|----------------------------|--|---|--|
| | | | | tolerance | | | | scale: 1:1 | |
| | | | | | | | | material: SEE NOTES | |
| | | | | 2007 | date | name | | title: METAL HOOD 9pos. EMI/RFI SHIELDING with side cable entry and jack screw M3 | |
| | | | | drawn | 07.11. | Petker | | | |
| | | | | appd. | 07.11. | Mickenbecker | | | |
| | | | | norm | | | | | |
| | | | | d-old | | | | | |
| 5 x b | Ä 4171 | 04.01.2012 | Lehmen. | | | dwg no: AutoCAD | | DIN-A | |
| a | Original | | | | | 16K1A2171 | | 4 | |
| rev. | description | date | name | | | product no: (b) 165X02729X | | sh:1/2 | |

4

3

2

1

F

F

E

E

D

D

C

C

B

B

A

A

4

3

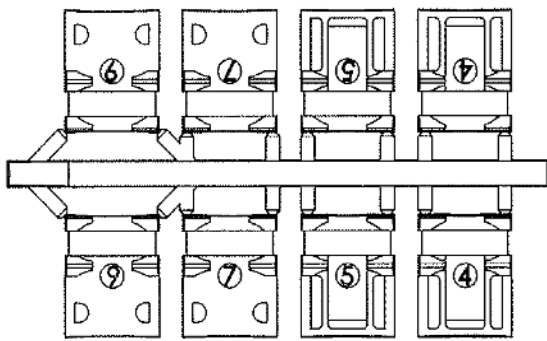
2

1

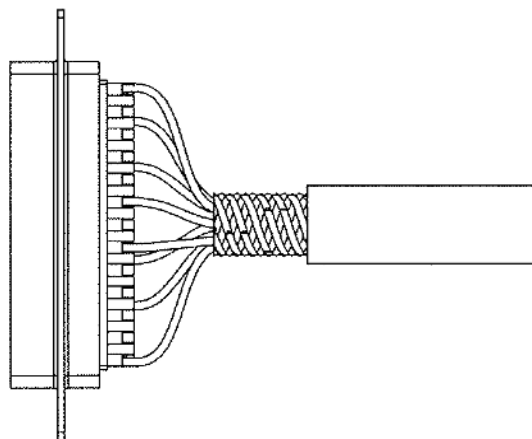
used for: D-SUB

ASSEMBLY INSTRUCTION:

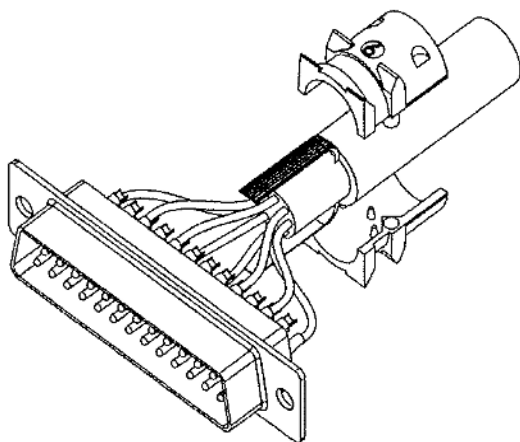
Use two halves of strain relief
different sizes can be mixed



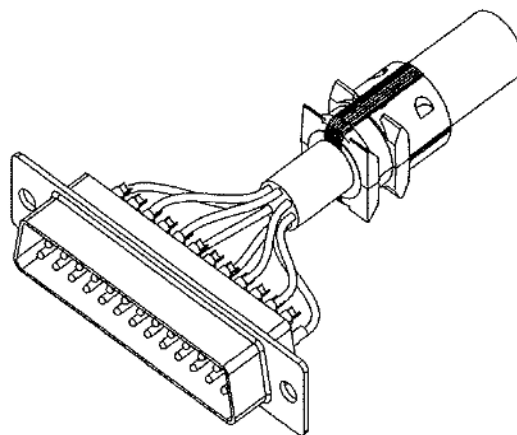
Strip cable 18mm and
shape cable to two pigtails



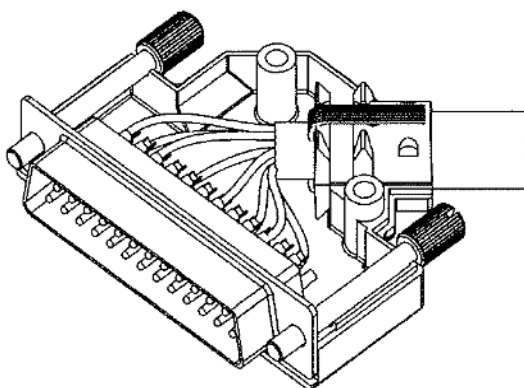
Attach the strain relief around the cable



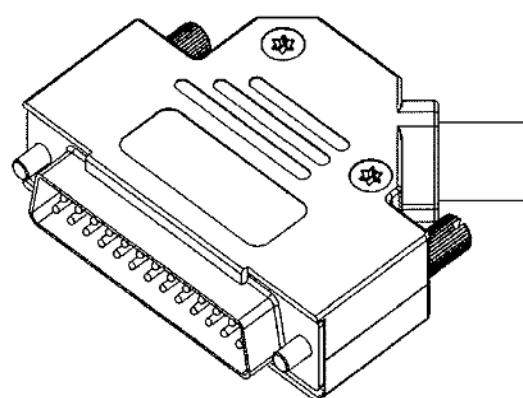
Bend cable shielding back
on outside of strain relief



Mount connector and cable
into the backshell



Assemble the other half
screwing force: 100-120 Ncm.



THIS DRAWING MAY NOT BE COPIED OR
REPRODUCED IN ANY WAY, AND MAY NOT
BE PASSED ON TO A THIRD PARTY WITHOUT
WRITTEN PERMISSION.
OWNERSHIP AND COPYRIGHT OF CONEC GmbH
DO NOT ALTER CAD DRAWING BY HAND

| | | | | | | | | |
|------|-------------|------|------|---------------|--------|--------------|---|-------------|
| | | | | tolerance | | | scale: | |
| | | | | dim. in mm | | | material: | |
| | | | | 2012 | date | name | title: ASSEMBLY INSTRUCTION METAL HOOD 9pos. EMI/RFI SHIELDING with side cable entry and jack screw M3 | |
| | | | | drawn | 04.01. | Lehmenkühler | | |
| | | | | appd. | 04.01. | Fischer | | |
| | | | | norm | | | | |
| | | | | d-old | | | | |
| a | Original | | | CONEC® | | | dwg no: | DIN-A 4 |
| rev. | description | date | name | | | | part no: | SEE SHEET 1 |

4

3

2

1