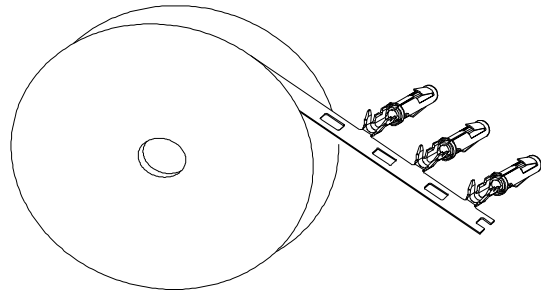
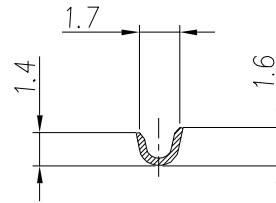


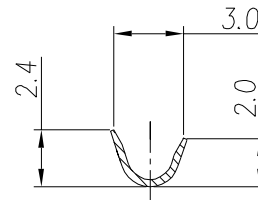
REVISIONS					
REV	ECO	DESCRIPTION	DATE	BY	APPR
B1	-	RELEASED DRAWING	JAN-18-2014	ARROW	TOMMY



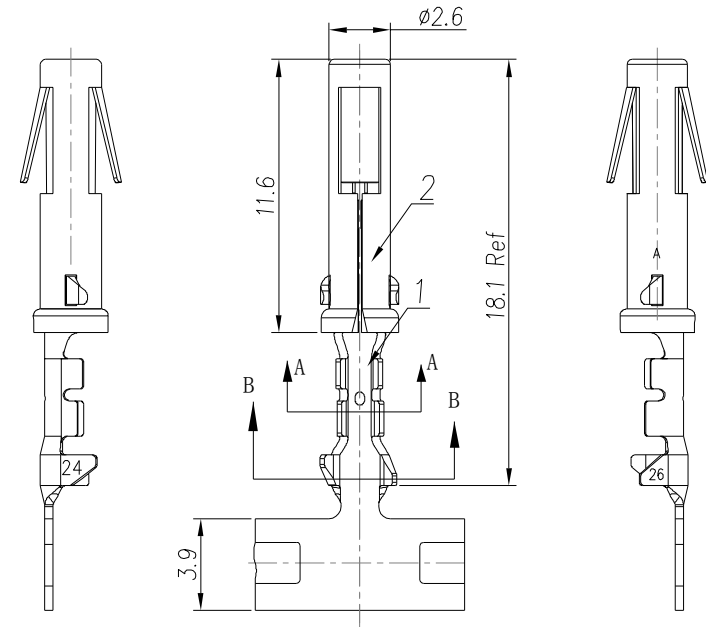
CONTACT ORIENTATION ON ROLL



SECTION A-A



SECTION B-B



NOTES : (UNLESS OTHERWISE SPECIFIED)

1. MATERIAL :
  - 1.1. CONTACT BODY : COPPER ALLOY.
  - 1.2. OUTER SPRING : STAINLESS STEEL.
2. SPECIFICATIONS :
  - 2.1 CURRENT RATING : 13A MAX.
  - 2.2 TERMINATION TYPE : CRIMPING.
  - 2.3 WIRE RANGE : 24~26AWG.
3. ROHS COMPLIANT.
4. ALL DIMENSIONS ARE FOR REFERENCE USE ONLY.
5. AVAICABLE TOOLS :
  - 5.1 HAND CRIMPER : MFX-3954.
  - 5.2 CRIMP APPLICATOR : MFX-3957.
  - 5.3 EXTRACTION TOOL : QXRT16.

P/N	CONTACT PLATING(MATING AREA)
SS24M1T	TIN PLATING OVER NICKEL.
SS24M1F	GOLD FLASH PLATING OVER NICKEL.
SS24M1G10	10μ"GOLD PLATING OVER NICKEL.
SS24M1G15	15μ"GOLD PLATING OVER NICKEL.
SS24M1G30	30μ"GOLD PLATING OVER NICKEL.

QUANTITY	PART NUMBER	DESCRIPTION	ITEM
<b>MATERIALS LIST</b>			
UNLESS OTHERWISE SPECIFIED 1) All dimensions are in metric(mm). 2) Tolerances are as follows: 1 PL DEC ±0.30 2 PL DEC ±0.16 3 PL DEC ±0.08 Fractions ±1/64 Angles ±1° 3) Note reference =		SIGNATURES    DATE DRAWN:    ARROW    JAN-17-2014 CHECKED: ENGINEER: APPROVAL: MATERIAL SPECIFICATIONS: CUSTOMER: THIS DRAWING IS SUPPLIED FOR INFORMATION ONLY. DESIGN FEATURES, SPECIFICATIONS AND PERFORMANCE DATA SHOWN HEREON ARE THE PROPERTY OF THE AMPHENOL CORPORATION. NO RIGHTS OF REPRODUCTION ARE IMPLIED. ALL DIMENSIONS ARE SUBJECT TO NORMAL MANUFACTURING VARIATIONS.	<b>Amphenol</b> Sine Systems - www.amphenol-sine.com 44724 Morley Drive Clinton Township, MI 48036 eco mate™, SOCKET CONTACT, STAMPED, 24-26AWG, SIZE 16
PROCESS SPECIFICATIONS:	NEXT ASSY:	SIZE: <b>B C-</b> TYPE: <b>SS24M1xx</b> SCALE: NONE	DWG NO: <b>SS24M1xx</b> REVISION: <b>B1</b> SHEET 1 OF 1

TITLE: SOCKET CONTACT, STAMPED, 24-26AWG, SIZE 16  
 DWG NO: SS24M1XX  
 REV: B1  
 SHEET 1 OF 1