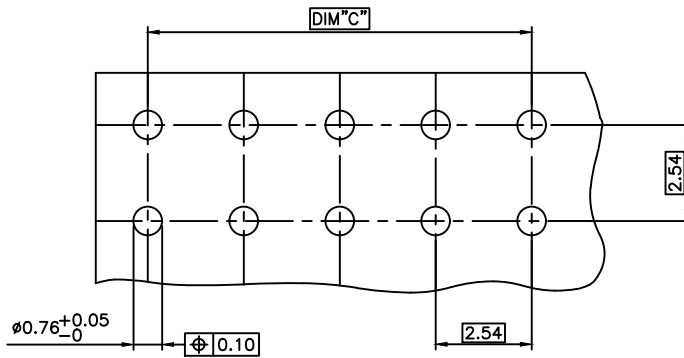
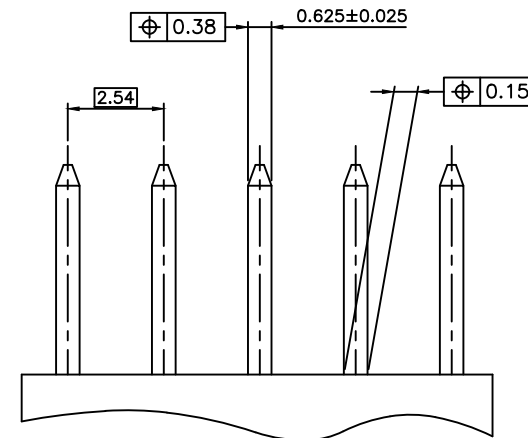


PRODUCT N°	DIM"C"	DIM"D"
91625-YXXLF	SEE TABLE SHEET 2/2	

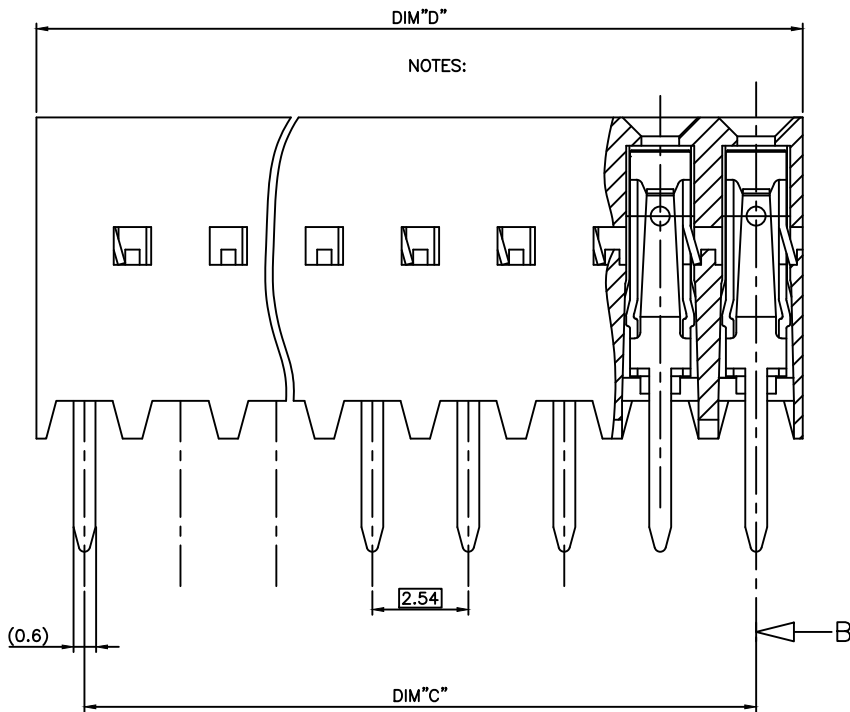
RoHS COMPATIBLE, SEE NOTE 4



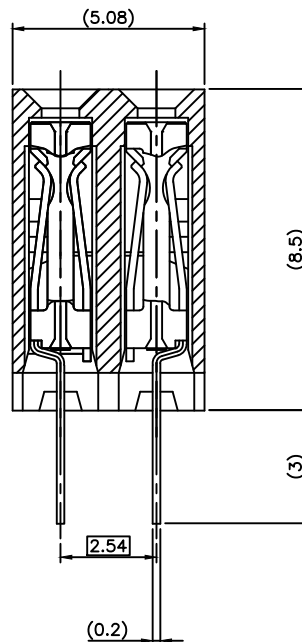
RECOMMENDED PC BOARD THICKNESS 1.6 mm MAX.



MINIMUM MATING PIN LENGTH: 5 mm.



NOTES:



SECTION B-B

NOTES:

- 1 - MATERIAL HOUSING: THERMOPLASTIC POLYESTER 30% GLASS FILLED, COLOUR BLUE. FLAME RETARDANT PER UL-94 CATEGORY V0.
- 2 - MATERIAL TERMINAL: PHOSPHOR BRONZE EXTRA HARD.
- 3 - CONNECTOR MEANT TO BE USED FOR PC BOARD WITH NONE PLATED THROUGH HOLES.
- 4 - RoHS COMPATIBLE PRODUCT SPECIFICATIONS
  - a - PLATING:
    - "LF" MEANS THE PRODUCT IS LEAD-FREE, 2µm MINIMUM MATTE TIN OVER 1.27µm MINIMUM NICKEL UNDERPLATE.
  - b - MANUFACTURING PROCESS COMPATIBILITY
    - THE HOUSING WILL WITHSTAND EXPOSURE TO 260°C ±5°C SOLDER BATH TEMPERATURE FOR 5 SECONDS IN A WAVE SOLDER APPLICATION WITH A 1.6mm MIN THICK CIRCUIT BOARD.
  - c - LABELING:
    - MEETS PACKAGING SPECS AS PER GS-14-920
  - d - LEGAL STATEMENT: SEE GS-47-0004

91625-6XXLF	2 µm GOLD	Sn
91625-4XXLF	2 µm Sn	Sn
91625-3XXLF	0.76 µm GOLD	Sn
PLATING CODE	CONTACT AREA	SOLDER TAIL
	PLATING THICKNESS OVER 1.27µm Ni	

mat'l. code SEE NOTES	surface ISO 1302 ✓ tolerance ISO 406 ISO 1001	projection mm	product family DX VCC DR
lfr ecn no dr date	tolerances unless otherwise specified	angles linear	file TOP ENTRY SELECT.LOADED
K F07-0154 DLE 07.03.15		mm	dwg no 91625
L F07-0271 LMU 07.12.06		scale 10:1	sheet 1 of 2 size A2
M F11-0314 LMU 11.10.28			type CUSTOMER Drawing
N B-19124 LMU 14.10.21 dr P.NIZZI 96.04.24			
P B-21076 LMU 15.06.05 engr J.M.PHAMVAN 96.04.24			
R F-47158 DDE 23.02.01 chr P.NIZZI 96.04.24			
sheet index	revision sheet	R P	
1	2		

