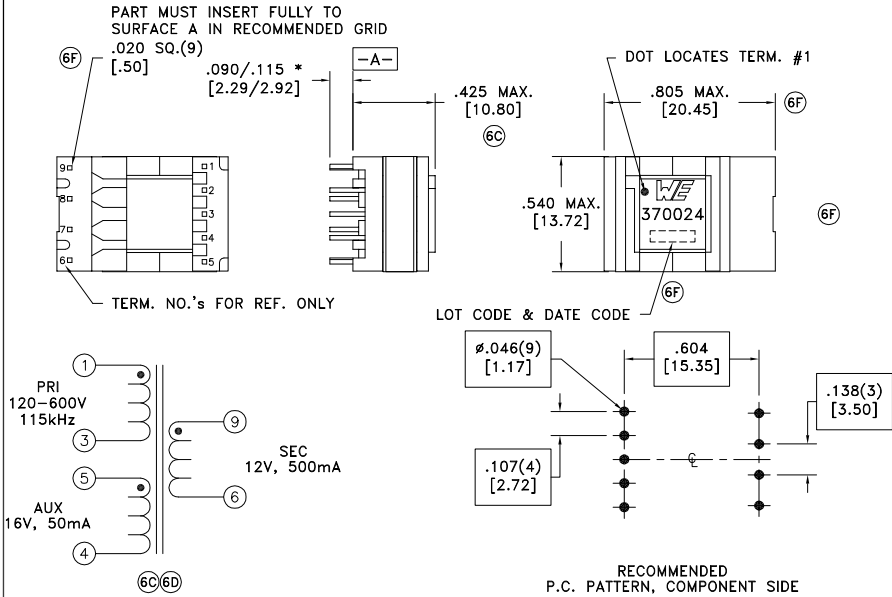


CUSTOMER TERMINAL	RoHS	LEAD(Pb)-FREE
Sn96%, Ag4%	Yes	Yes

make this your keyword



* DIMENSION MAY BE EXCEEDED WITH SOLDER ONLY



ELECTRICAL SPECIFICATIONS @ 25°C unless otherwise noted:

PARAMETER	TEST CONDITIONS	VALUE
D.C. RESISTANCE	1-3 @20°C	6.20 ohms max.
D.C. RESISTANCE	6-9 @20°C	0.10 ohms max.
D.C. RESISTANCE	4-5 @20°C	1.00 ohms max.
INDUCTANCE	1-3 10kHz, 100mVAC, Ls	1.60mH ±10%
LEAKAGE INDUCTANCE	1-3 tie(4+5, 6+9), 100kHz, 100mVAC, Ls	35uH typ., 50uH max.
DIELECTRIC	1-9 tie(3+5), 4000VAC, 1 second	4000VAC, 1 minute
TURNS RATIO	(1-3):(9-6)	8:1, ±1%
TURNS RATIO	(1-3):(5-4)	6:1, ±1%

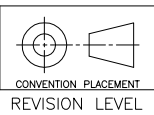
GENERAL SPECIFICATIONS:

OPERATING TEMPERATURE RANGE: -40°C to +125°C.

- Complies with the following requirements as defined by IEC61558-2-16, Amendment 1:
- Basic insulation for a working voltage of 600VDC.
 - Reinforced insulation for a working voltage of 239VAC.

- Wire insulation & RoHS status not affected by wire color.
- Wire insulation color may vary depending on availability.

REV.	DATE	Packaging Specifications
6F	8/15	Method: Tray
6E	3/11	PKG-0730
6D	5/10	www.we-online.com/midcom
6C	9/09	SEE REVISION SHEET FOR



Tolerances unless otherwise specified:
 Angles: ±1°
 Fractions: ±1/64
 Decimals: ±.005 [.13]
 Footprint: ±.001 [.03]

This drawing is dual dimensioned. Dimensions in brackets are in millimeters.

DRAWING TITLE
TRANSFORMER
 EE13/7/4
 eiSos p/n: 750370024

PART NO.
750370024
 SPECIFICATION SHEET 1 OF 1

