

**NEW**

# ILT Series Illuminated Toggle Switch

## Features/Benefits

- **LED built in to toggle handle. Save panel space instead of having an separate indicator light.**
- **6 LED color options to choose from. Easily determine if the switch is ON or Off from any distance.**
- **Electrical ratings up to 20 Amps. Suitable for high amp, industrial applications.**
- **6.3 quick connect Terminals. Easy installation. No soldering required.**

## Typical Applications

- **Telecommunications**
- **Instrumentation**
- **Medical equipment**

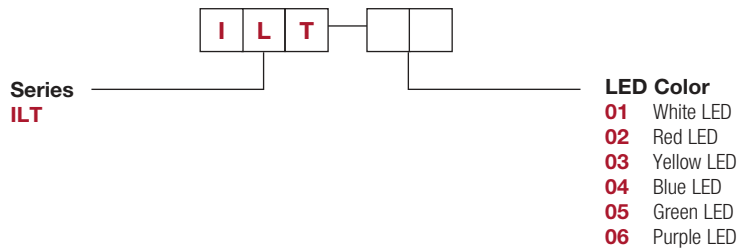


## Specifications

RATINGS: 20A 12 VDC  
CONTACT RESISTANCE: 50 mΩ max.  
INSULATION RESISTANCE: 500V DC 1000MΩ min.  
DIELECTRIC STRENGTH: 1 Minute 1500V AC  
OPERATING TEMPERATURE: -25°C to +85°C  
ELECTRICAL LIFE: 10,000 cycles

## Build-A-Switch

To order, simply select desired option from each category and place in the appropriate box. For additional options not shown in catalog, consult Customer Service Center.



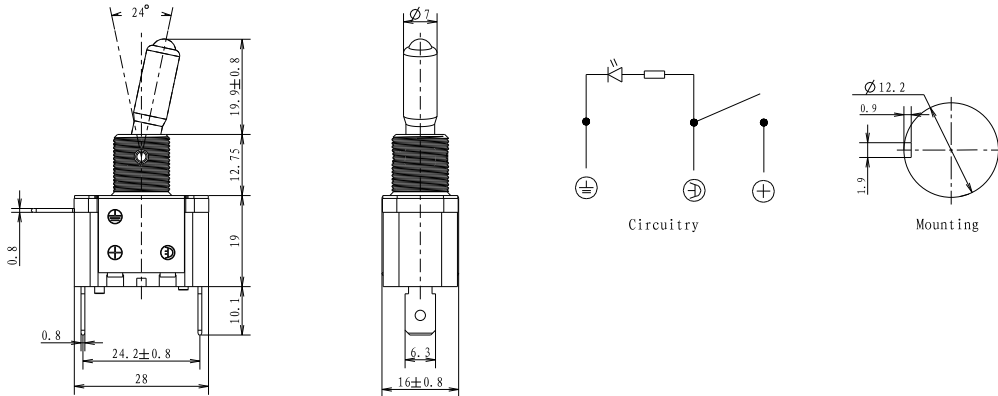
F

**Toggle**

# ILT Series Illuminated Toggle Switch

## SWITCH FUNCTION

UL** MODEL NO.	SWITCH FUNCTION	
	POS. 1	POS. 2
	KEYWAY	KEYWAY
ILT01	ON	OFF
ILT02	ON	OFF
ILT03	ON	OFF
ILT04	ON	OFF
ILT05	ON	OFF
ILT06	ON	OFF



### Selection Guide

Dice	Lens Type	Luminous intensity(mcd) @ 20mA			Viewing Angle
		Min.	Typ	Max.	
White	Water Clear	10000	--	12000	20
Red	Red Diffused	200	--	500	30
Yellow	Yellow Diffused	200	--	500	20
Blue	Water Clear	3000	--	5000	20
Green	Green Diffused	8000	--	10000	30
Purple	Water Clear	3000	--	5000	20

Note:

1. 1/2 is the angle from optical centerline where the luminous intensity is 1/2 the optical centerline value.

2. the above luminous intensity measurement allowance tolerance  $\pm 15\%$

### Electrical / Optical Characteristics at Ta=25° C

Parameter	Units	White	Red	Yellow	Blue	Green	Purple
		Forward Voltage(VF)	V	2.8-3.6	2.0 Typ	2.0 Typ	2.8-3.6
Reverse Current(IR)	$\mu$ A	10 Max.	10 Max.	10 Max.	10 Max.	10 Max.	10 Max.
Dominate Wavelength( $\lambda$ d)	nm	460-465	620-625	585-590	460-465	520-525	460-465

### Absolute Maximum Ratings at Ta=25° C

Parameter	Units	White	Red	Yellow	Blue	Green	Purple
		Power Dissipation(Pd)	mW	90	60	60	90
DC Forward Current(IF)	mA	20	20	20	20	20	20
Peak Forward Current [1](IFP)	mA	60	60	60	60	60	60
Reverse Voltage(VR)	V	5	5	5	5	5	5
Electrostatic Discharge (HR0) (ESD)	V	2000	2000	2000	2000	2000	2000
Operating Temperature(Topr)	° C	-40°+80					
Storage Temperature(Tstg)	° C	-40°+100					

Note:

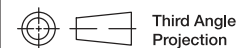
1. 1/10 Dut cycle,0.1ms pulse width.

2. The above forward voltage measure ment allowance tolerance  $\pm 0.1V$ .

Toggle

**C&K**

9 Dec 21



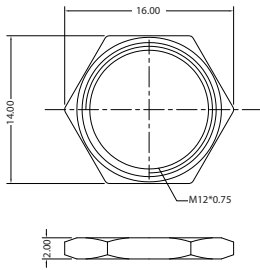
Third Angle  
Projection

Dimensions are shown: Inches (mm)  
Specifications and dimensions subject to change

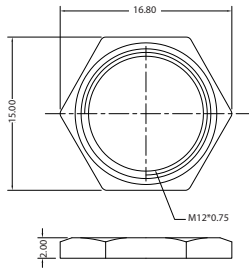
**NEW**

# ILT Series Illuminated Toggle Switches

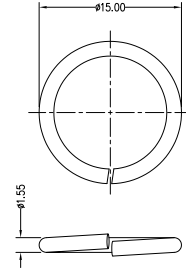
## MOUNTING HARDWARE



**PART NO.**  
**G01101325** 14MM HEX NUT



**PART NO.**  
**G01101326** 15MM HEX NUT



**PART NO.**  
**G01101327** 15MM WASHER



F

Toggle