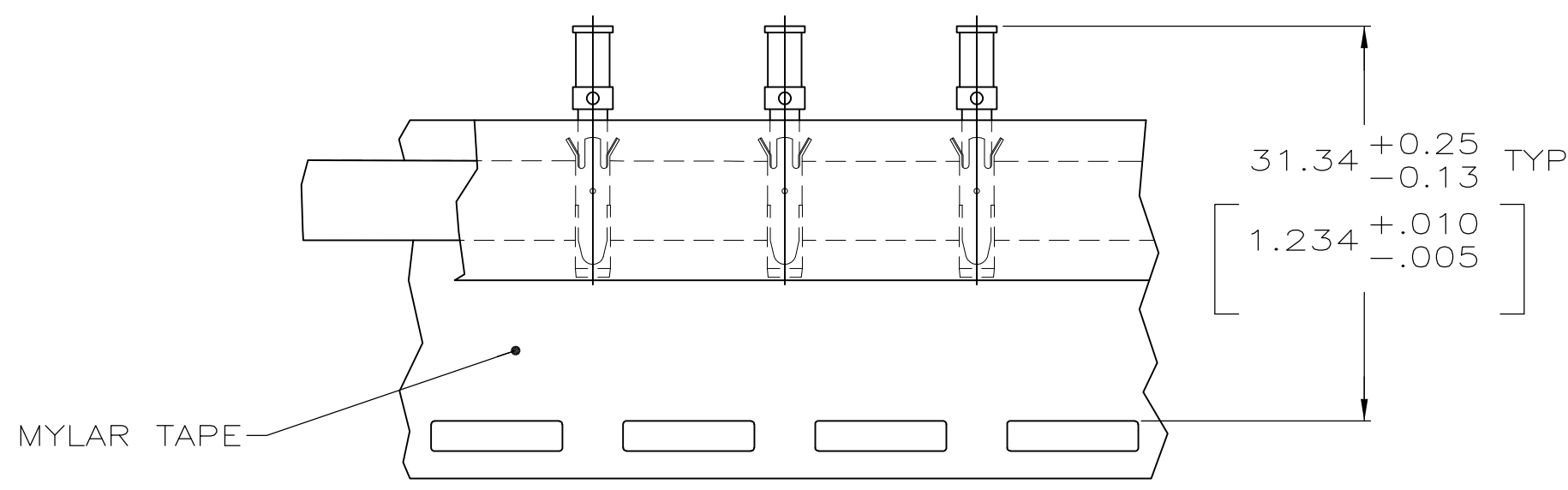
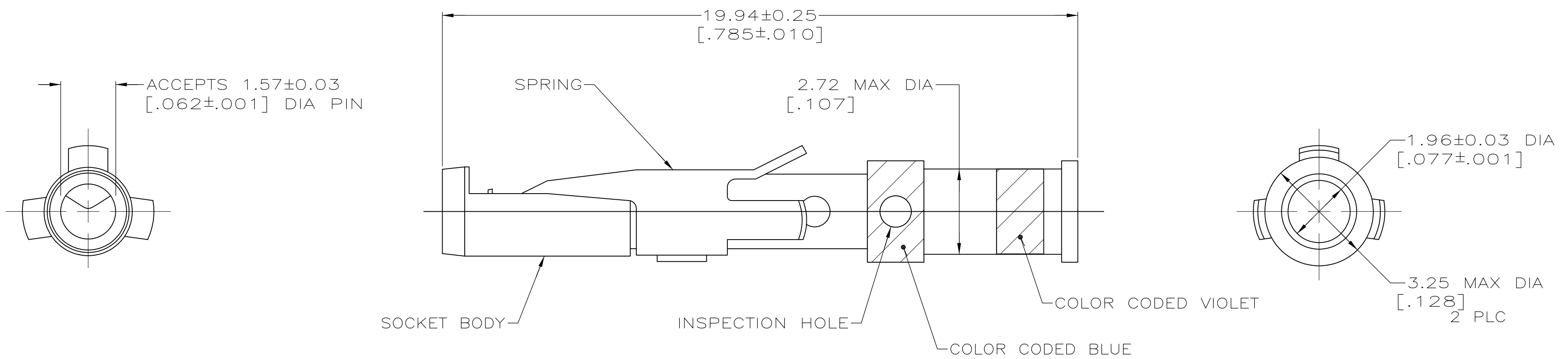


MOD	LOC	DIST	P	F	ZONE	LTR	DESCRIPTION	DATE	APPD
4	BD	39				U	ADDED -8 NPR 4680 AND REDRAWN ON CAD, OBS -4 EC 0020-344-93	04/06/93	-
						U1	REVISED PER ECO-09-020935	08SEP09	KK AEG



TAPE MTG DETAIL
SCALE 2:1

- △ 0.76µm [.000030] MIN GOLD OVER 1.27µm [.000050] MIN NICKEL.
- △ 1.27µm [.000050] MIN GOLD OVER 1.27µm [.000050] MIN NICKEL.
- △ WHEN ORDERING CONTACT ASSEMBLY ON TAPE, ORDER BY THE TAPE NUMBER PLUS THE PACKAGING CODE AS FOLLOWS:
 1. FOR USE WITH AMP TAPETRONIC, PNEUMATIC TOOL-
 - A. 1000 PARTS TO A BOX ADD PACKAGING CODE: 1MBOX
 2. FOR USE WITH 4/8 INDENT STRIPPER CRIMPER-
 - A. 1000 PARTS TO A REEL ADD PACKAGING CODE: 1MREEL
 - B. 5000 PARTS TO A REEL ADD PACKAGING CODE: 5MREEL
- △ OBSOLETE PARTS: OBSOLETE CIS STREAMLINING PER D.RENAUD/D.SINISI

△ 4	OBSOLETE	SMALL PACK	△ 1	201568-8
	OBSOLETE	STANDARD	△ 2	201568-4
		TAPE MTG (SEE DETAIL) △ 3	△ 1	201568-3
		STANDARD	△ 1	201568-1
		PACKAGING TYPE	SOCKET BODY FINISH	PART NO
DO NOT SCALE PRINT. UNLESS SPECIFIED DIMENSIONS IN mm [INCHES] TOLERANCES ON :		DR 04/06/93 D.GELTZ	AMP Incorporated Harrisburg, PA 17105-3608	
2 PLC DEC ± -		CHK 4-26-93 R.STONE		
3 PLC DEC ± -		APPD 4-29-93 R.S.KLINE	NAME	
ANGLES ± -		APPD -	CONTACT ASSEMBLY, SOCKET, #16, 14 AWG, TYPE II	
MATERIAL		PRODUCT SPEC		
SOCKET BODY: COPPER ALLOY		APPLICATION SPEC	SIZE	CAGE CODE
SPRING: STAINLESS STEEL			△ C	00779
FINISH			DRAWING NO	
SOCKET BODY: SEE TABLE			△ C-201568	
		WEIGHT -	SCALE 10:1	SHEET 1 OF 1

THIS DRAWING IS A CONTROLLED DOCUMENT FOR AMP INCORPORATED. IT IS SUBJECT TO CHANGE AND THE CONTROLLING ENGINEERING ORGANIZATION SHOULD BE CONTACTED FOR THE LATEST REVISION.