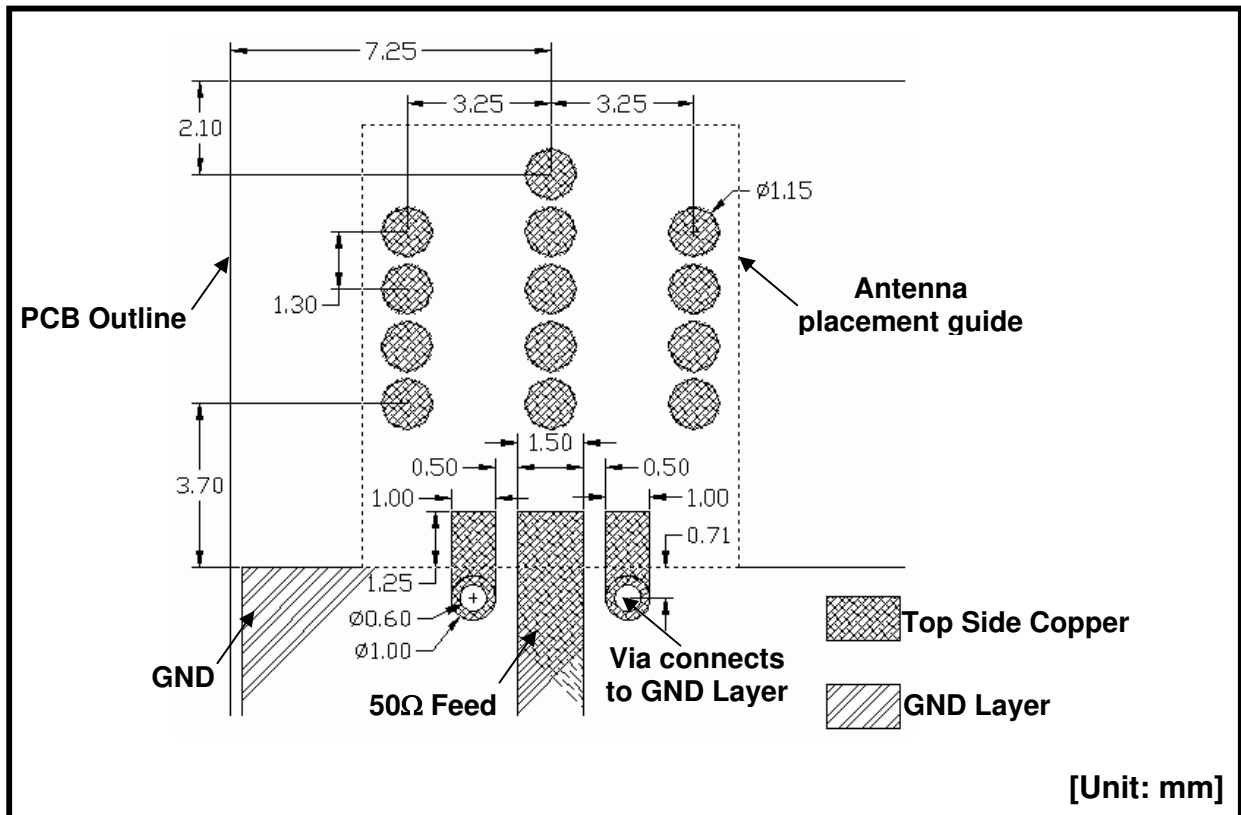
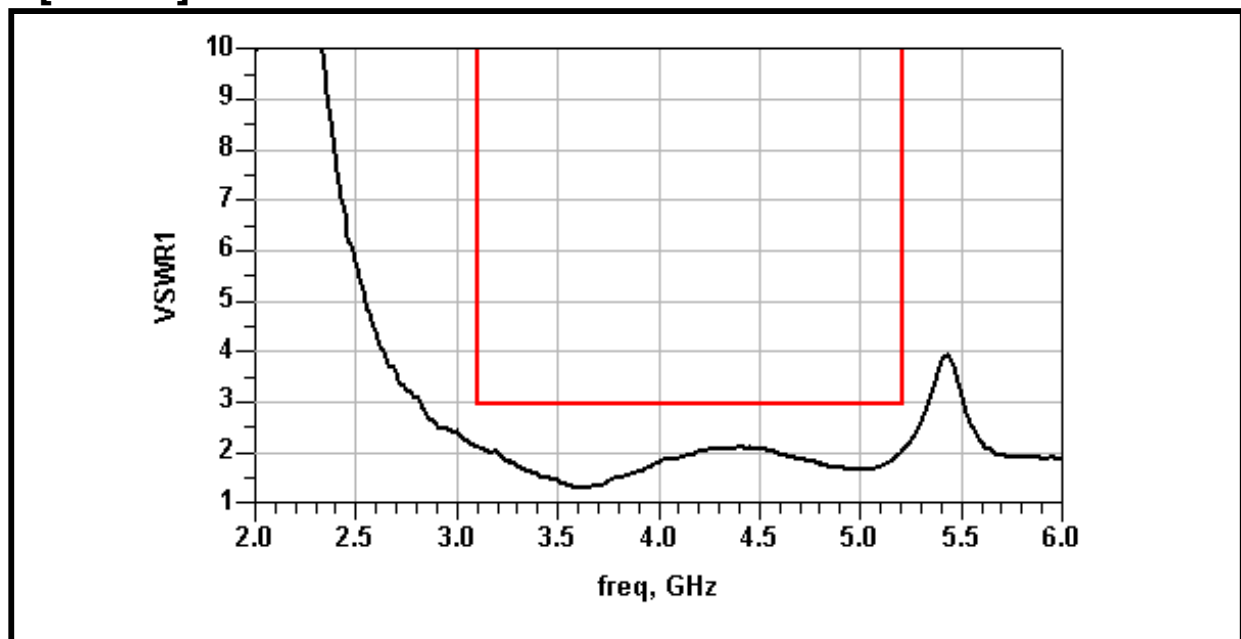


[Recommended PCB Pattern]



Note 1: No ground should be placed on any layer under the antenna.
 Note 2: The antenna should be positioned close to the edge of the PCB.

[VSWR]

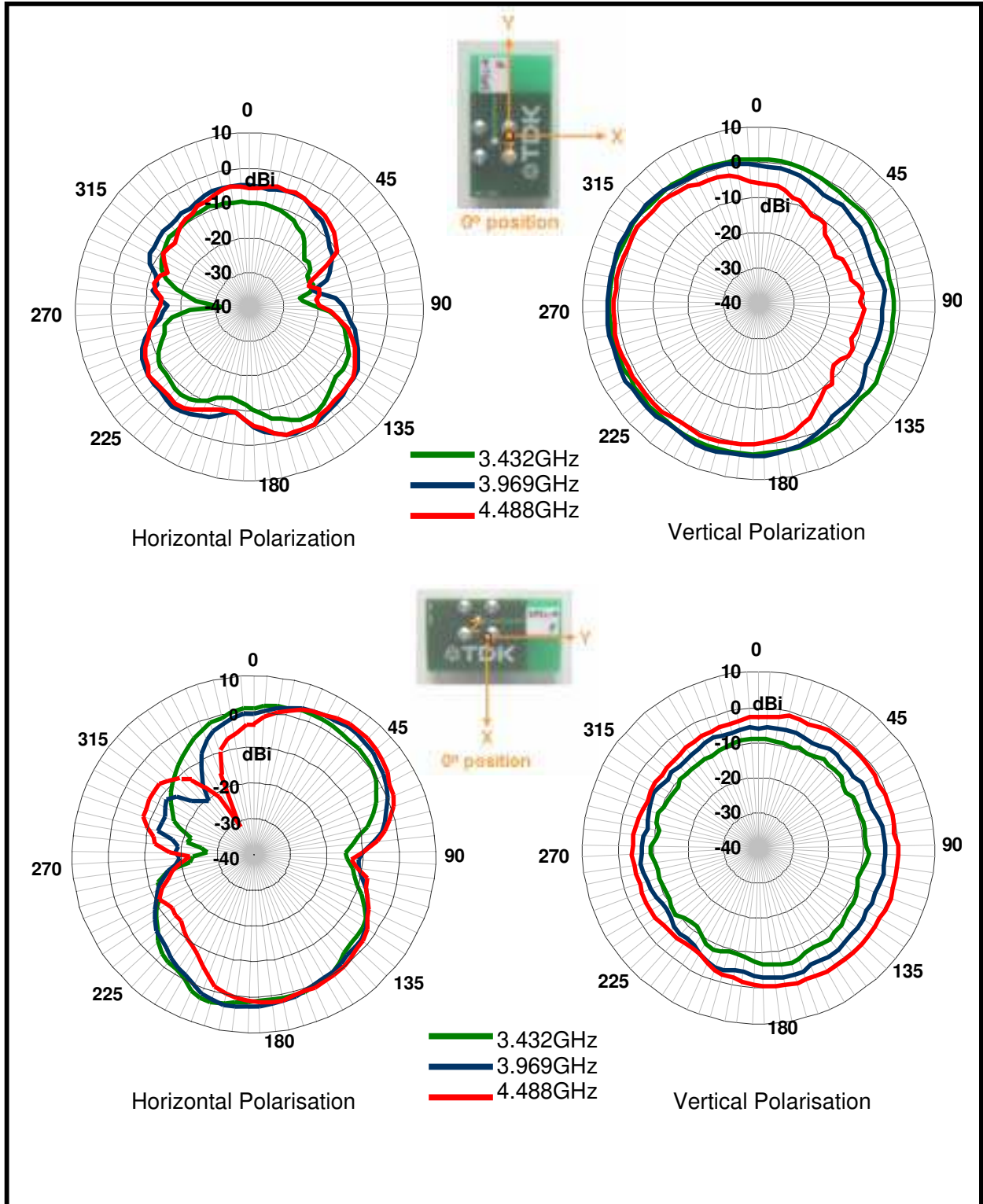


Note: Tested antenna has been soldered on 24X43mm² PCB.

Note: This document is PRELIMINARY. All specifications are subject to change without notice and are not guaranteed.

[RADIATION PATTERN]

- Item: ANT1085 – 4R1 – 01A
- Simulated results in advance of measurements



Note: This document is PRELIMINARY. All specifications are subject to change without notice and are not guaranteed.

