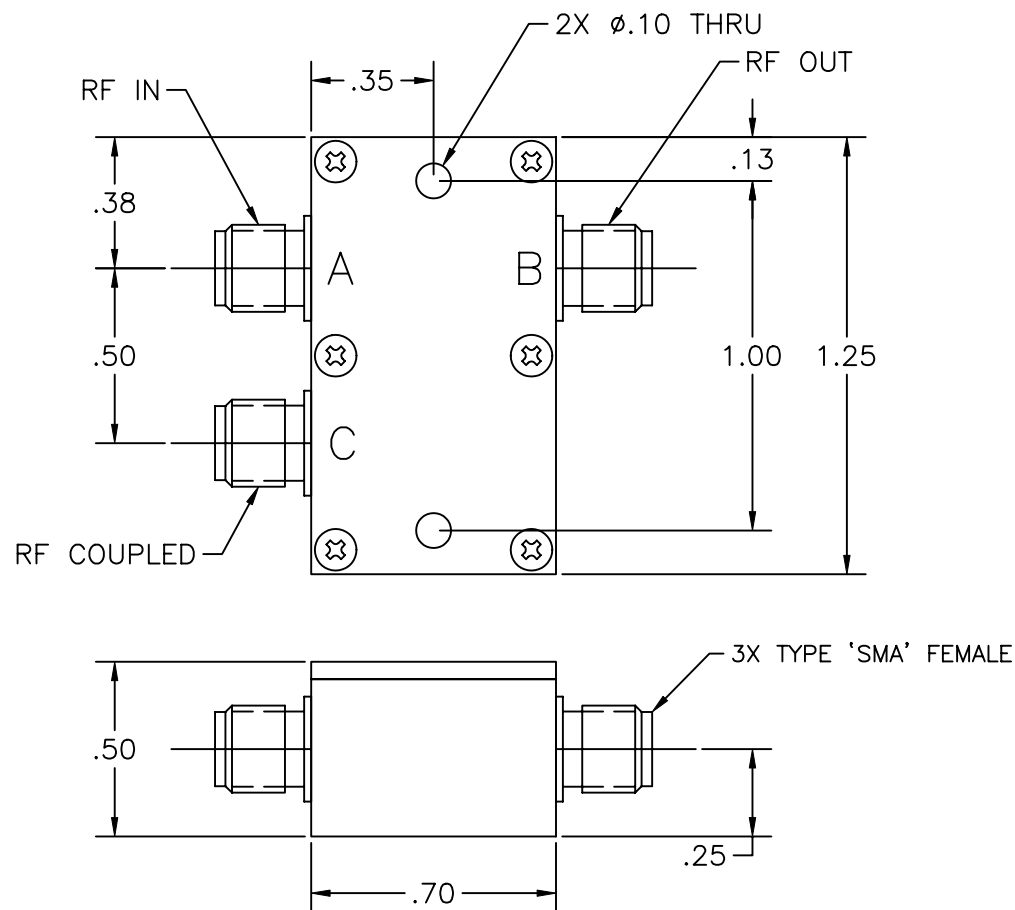


PROPRIETARY DATA OF IF Engineering Corp.
 THIS DOCUMENT CONTAINS PROPRIETARY INFORMATION.
 ANY REPRODUCTION, DISCLOSURE, OR USE OF
 ITS CONTENTS IS EXPRESSLY PROHIBITED EXCEPT AS
 AUTHORIZED BY IF Engineering Corp.

REVISION

LTR.	DESCRIPTION	DATE	APPVL.
-	ENG. RELEASED	2/27/08	MJD
A	CHANGED PER ECN 0850002	12/9/08	MJD
B	ECO #1633001	8/11/16	MJD



ELECTRICAL SPECIFICATION
 DIRECTIONAL COUPLER

FREQUENCY RANGE (MHZ)	950-2150
COUPLING (dB) NOM.	10
COUPLING TOL. (dB) MAX.	± 1.2
COUPLING VARIATION (dB) MAX.	± 1.2
INSERTION LOSS (dB) MAX.	0.75
DIRECTIVITY (dB) MAX.	15
VSWR IN	1.4:1
VSWR OUT	1.4:1
VSWR COUPLED	1.6:1
IMPEDANCE (OHMS) NOM.	50
TEMPERATURE RANGE ($^{\circ}$ C)	0 TO +50

**RoHS
 Compliant**

PORT	DESIG.
A	RF IN
B	RF OUT
C	RF COUPLED

UNLESS OTHERWISE SPECIFIED DRAWING PRACTICES PER ASME Y14.100		DRAWN	DATE
		MJD	2/21/08
TOLERANCES ANGLES $\pm 1/2^{\circ}$		ENGRG APPD	DATE
.XX \pm .01	.XXX \pm .005	CL	2/27/08
SURFACE $\sqrt{63}$ REMOVE BURRS		MFG APPD	DATE
ROUGHNESS \checkmark SHARP EDGES		EDW	2/27/08
MATERIAL: SEE NOTE 1		QA APPD	DATE
FINISH: SEE NOTE 2		EJS	2/27/08
		RELEASED	DATE
		MJD	2/27/08

IFE ENGINEERING
 3 FOSHAY ROAD, DUDLEY MA 01571

TITLE
 OUTLINE DRAWING
 C3-10-LB3-S

SIZE	CODE IDENT NO.	DRAWING NO.	REV.
A	OUF A1	110-146-181	B
SCALE N/A		SHEET 1 OF 1	

NOTES:

1. MATERIAL: CHASSIS & COVER ALUMINUM
2. FINISH: CLEAR CHROMATE
3. SPECIFICATION SUBJECT TO CHANGE WITHOUT NOTICE