

KLG-1010-18Q Product Datasheet

KLG-1010-18Q is a 4 pack of monolayer graphene film on 18-micron thick quartz substrate.

Graphene Film

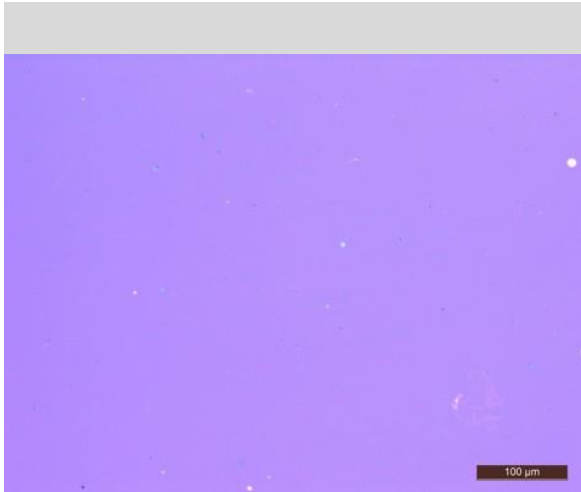
Growth Method	CVD synthesis
Transfer Method	Clean transfer method
Quality Control	Raman and Optical Microscopy
Appearance (Color)	Transparent
Transparency	>97%
Appearance (Form)	Film
Coverage	>95%
Number of graphene layers	1
Theoretical thickness	0.345 nm
Sheet Resistance Quartz (Van der Pauw)	370±50 Ohms/sq. (1cm x 1cm)
Grain size	Up to 10 µm

Substrates

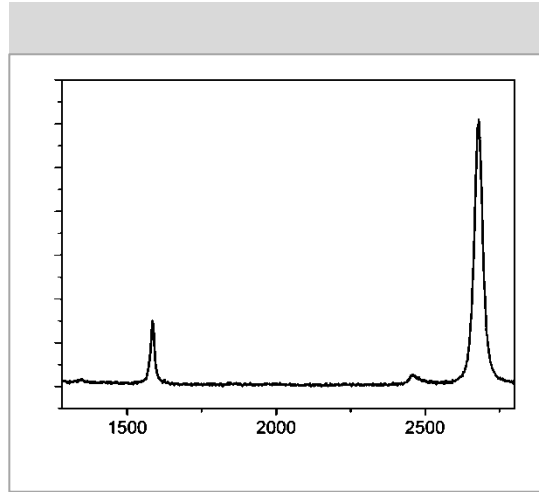
Quartz

Flatness	Bow: 20µm; Warp: 30µm
Polished	Double side polished

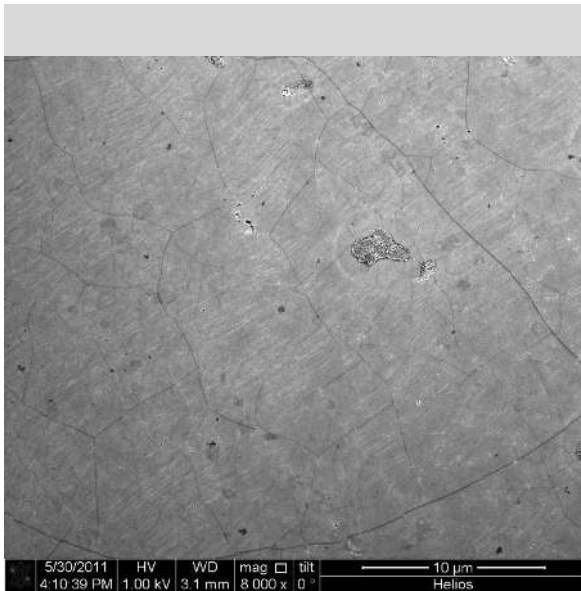
Optical Microscopy



Raman Spectrum



SEM image



HRTEM image

