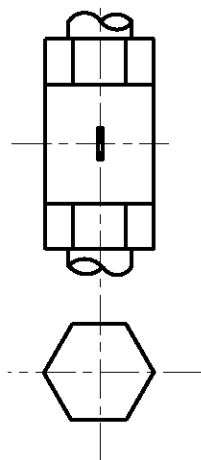
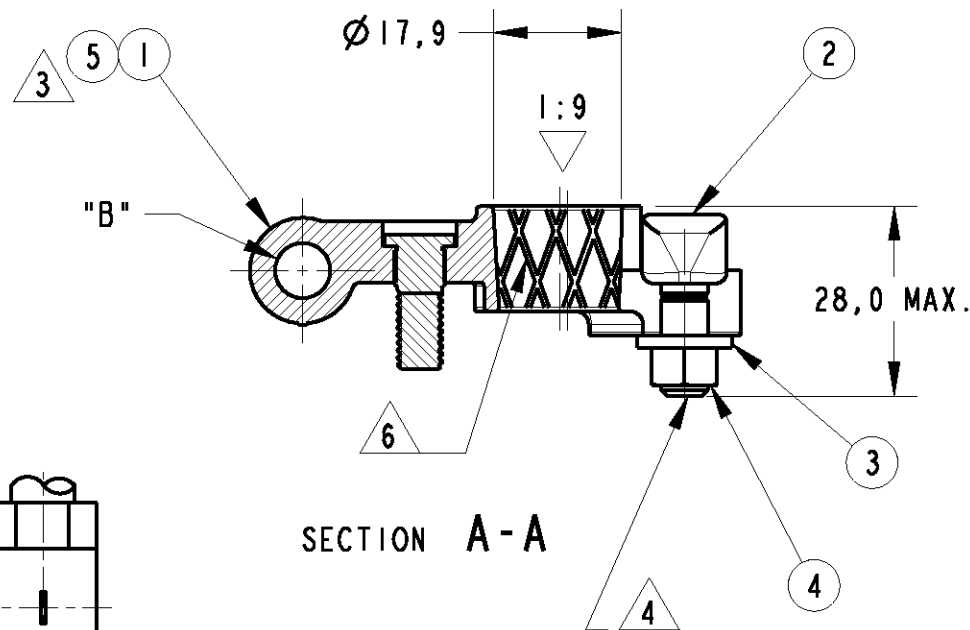
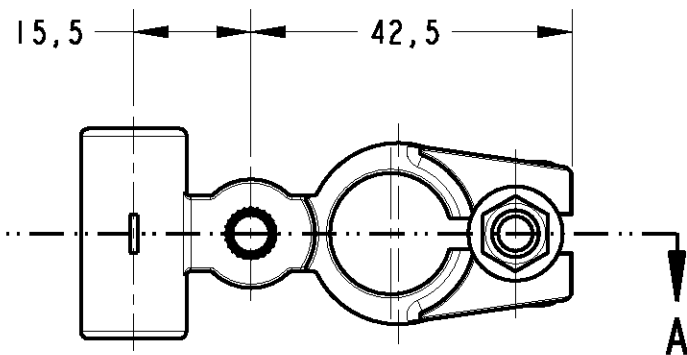


LOC	DIST	REVISIONS			
P	LTR	DESCRIPTION	DATE	DWN	APVD
AP	-	0	RELEASED	29SEP97	MRB PLF
		C	NOTE 6 ADDED EC197/02	17JUL02	MRB PFL
		C1	REVISED BY EC220/02	03AUG02	CRM PLF
		C2	REVISED BY ECO-08-008859	23APR2008	NCL NS



FIXAÇÃO DO CABO POR COMPRESSÃO EM FORMATO HEXAGONAL.

CABLE FIXATION BY COMPRESSION, OF HEXAGONAL FORM.



6 - OPCIONAL, SE NECESSÁRIO PARA ATENDER A ESPECIFICAÇÃO FORD ES-F3LU-14450-AA, ITEM 3.3 (HOLDING CAPACITY FOR REVOLUTION).

6 - OPTIONAL, IF NECESSARY TO MEET FORD SPECIFICATION ES-F3LU-14450-AA, ITEM 3.3 (HOLDING CAPACITY FOR REVOLUTION).

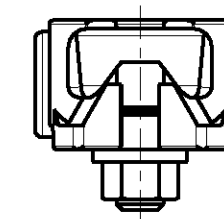
1 - AÇO CARBONO DIN 125-A.

2 - PORCA SEXTAVADA, M6x1 DIN 934-mg8 CLASSE DE ACABAMENTO DA ROSCA = 6H.

3	PARA APLICAÇÃO DE CABO: FOR CABLE CRIMPING	
	PN	BITOLA/WIRE RANGE
	493071-1	10+14 mm ²
	493071-2	16 mm ²

4 - A ROSCA DEVE SER DEFORMADA APÓS A MONTAGEM PARA NÃO PERDER A PORCA.

5 - ESPECIFICAÇÃO DE PRODUTO CONFORME NUMERO 108-37055.



1 - CARBON STEEL / DIN 125-A.

2 - HEXAGONAL NUT M6x1 DIN 934 mg8, THREAD FINISH CLASS = 6H.

4 - AFTER NUT/WASHER ASSEMBLY SCREW SHALL BE DEFORMED TO AVOID LOOSENING THE NUT.

5 - ACCORDING TO THE PRODUCT SPECIFICATION NO. 108-37055.

REQ. PER ASSY	ITEM	DESCRIPTION	MATERIAL	FINISH
1	5	BATTERY TERMINAL, NEGATIVE.	LATÃO-MOLDÁVEL BRASS-DIE CAST	ESTANHADO/TIN PLATED
1	4	NUT, M-6.	2	ZINCADO / ZINC PLATED
1	3	WASHER, M-6.	1	ZINCADO / ZINC PLATED
1	2	SCREW, M-6, T-TYPE.	CLASSE 8.8 ISO898-1 CLASS	ZINCADO BICROMATIZADO TRIVALENTE
-	1	BATTERY TERMINAL, NEGATIVE.	LATÃO-MOLDÁVEL BRASS-DIE CAST	-

THIS DRAWING IS A CONTROLLED DOCUMENT FOR TYCO ELECTRONICS CORPORATION. IT IS SUBJECT TO CHANGE AND THE CONTROLLING ENGINEERING ORGANIZATION SHOULD BE CONTACTED FOR THE LATEST REVISION.		DWN M.R. BRIZ 23SEP97 CHK P.L. FARIA 29SEP97 APVD J.M. MORAES NETO 29SEP97	Tyco Electronics AMP do Brasil LTDA. São Paulo, Brasil
DIMENSIONS: mm 	TOLERANCES UNLESS OTHERWISE SPECIFIED: 0 PLC ±- 1 PLC ±0.3 2 PLC ±- 3 PLC ±- 4 PLC ±- ANGLES ±°	PRODUCT SPEC -/- APPLICATION SPEC -/- WEIGHT -/-	NAME BATTERY TERMINAL ASSY., NEGATIVE SIZE A3 CAGE CODE 00779 DRAWING NO. C-493071
MATERIAL -/-	FINISH -/-	CUSTOMER DRAWING DESENHO DE CLIENTE	RESTRICTED TO - SCALE SHEET OF REV C2