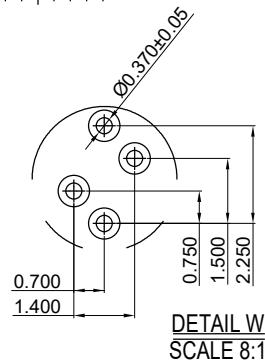
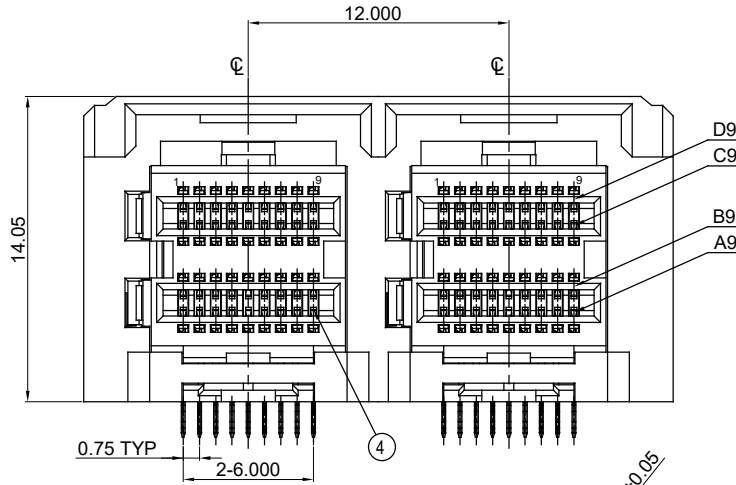
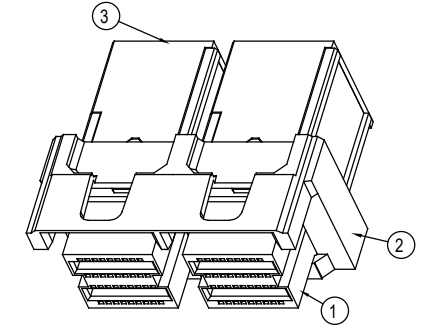
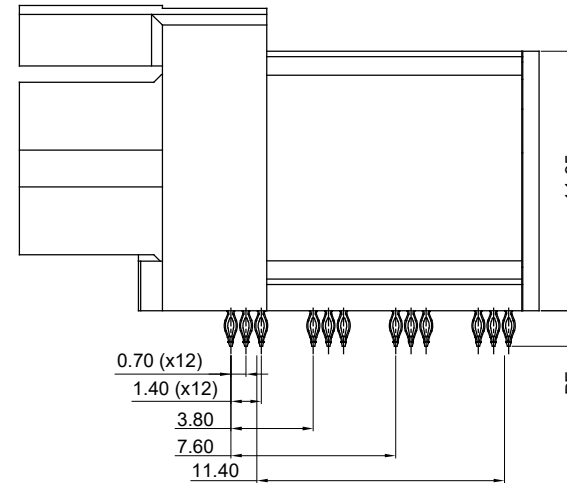


TOLERANCE UNLESS OTHERWISE SPECIFIED	
.X	±0.25
.XX	±0.15
.XXX	±0.10

THIS IS A C.A.D. GENERATED DRAWING  
DO NOT MAKE MANUAL REVISIONS TO MASTER.



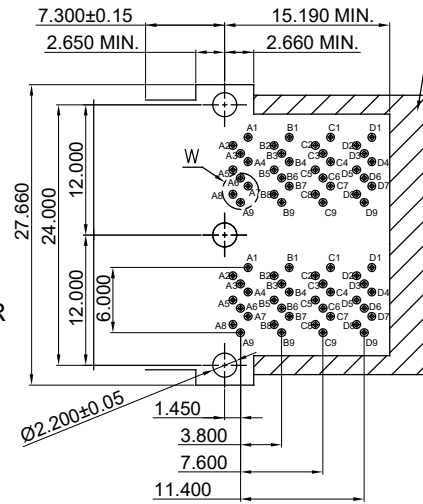
DETAIL W  
SCALE 8:1



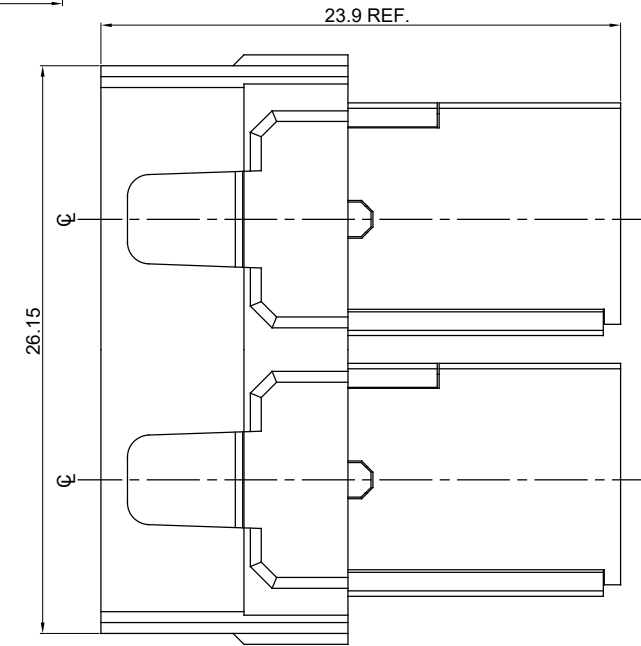
NOTES:

- MATERIAL: L.C.P SERIES, UL-94V-0  
 HOUSING: COLOR: BLACK  
 CONTACT: COPPER ALLOY  
 GOLD FLASH PLATING ON CONTACT AREA &  
 MATTE TIN PLATING 30~120 u" ON SOLDER TAIL OVER  
 50~150 u" NICKEL UNDER PLATING

KEEP COMPONENT OUT AREA



RECOMMENDED PCB LAYOUT (TOP VIEW)  
TOLERANCE=±0.05mm



4	CONTACT(IM)	36	COPPER ALLOY	SEE NOTES
3	HOUSING	1	L.C.P SERIES, UL94 V-0	BLACK
2	COVER HOUSING	1	L.C.P SERIES, UL94 V-0	-
1	BODY HOUSING	1	L.C.P SERIES, UL94 V-0	-
NO.	DESCRIPTION	QTY.	MATERIAL	FINISH/COLOR

MINI SAS HD EXTERNAL, RIGHT ANGLE PRESS FIT,  
FEMALE, 36 CONTACTS

ACAD REFERENCE NO.: 902-036-225-002

DRAWN: W.T DATE: JUNE.28 /2018

CHECKED: DATE:

SCALE: N.T.S SHEET 1 OF 1

DRAWING NUMBER: 902-036-225-002

ISSUE

PART NUMBER: 902-036-225-002

1



THIS SERIES FULLY CONFORMS TO  
THE EUROPEAN UNION DIRECTIVES  
2011/65/EU FOR RoHS COMPLIANCY.



YOUR CONNECTION TO QUALITY & SERVICE

EDAC INC  
TORONTO, ONTARIO  
CANADA

THESE DRAWINGS AND SPECIFICATIONS  
ARE THE PROPERTY OF EDAC INC., AND  
SHALL NOT BE REPRODUCED, OR COPIED  
OR USED AS THE BASIS FOR THE  
MANUFACTURE OR SALE OF APPARATUS  
WITHOUT WRITTEN PERMISSION.