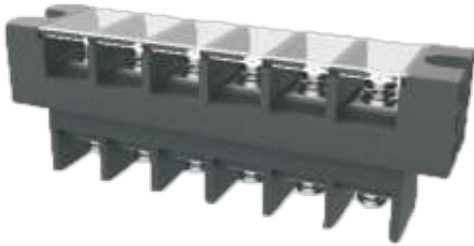


WJ10C-21.0
BARRIER TERMINAL BLOCK



Material

Screws	M6.0 Steel Zn plated
Pin Header	Copper alloy , Sn plated
Housing	PBT , UL94V-0

Electrical

Standard	UL
Rated Voltage	600V
Rated current	115A
Wire range	8-2AWG
Contact Resistance	20mΩ
Insulation resistance	1000MΩ/DC500V
Withstanding voltage	AC2500V/1Min
Temp.range	-40°C~+105°C
Torque	30.6Kgf.cm/3.0Nm/26.6Lb.in

Other Data

Pitch/Poles [mm]/[P]	21.0/1-15
----------------------	-----------

WJ10C-21.0
BARRIER TERMINAL BLOCK

Operating temperature [°C]	-40°C~+130°C
Torque	30.6Kgf.cm/3.0Nm/26.6Lb.in

Dimensions

PCB opening diagram

