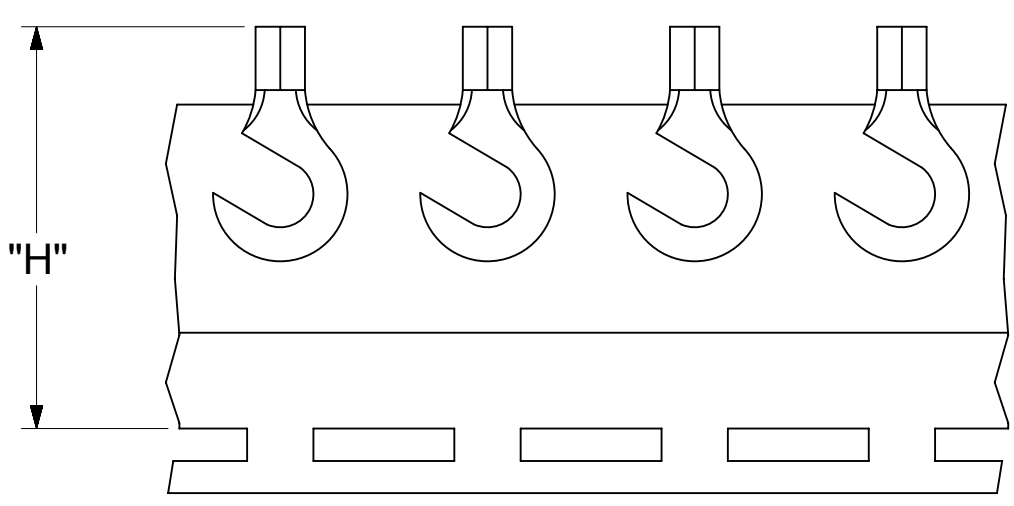
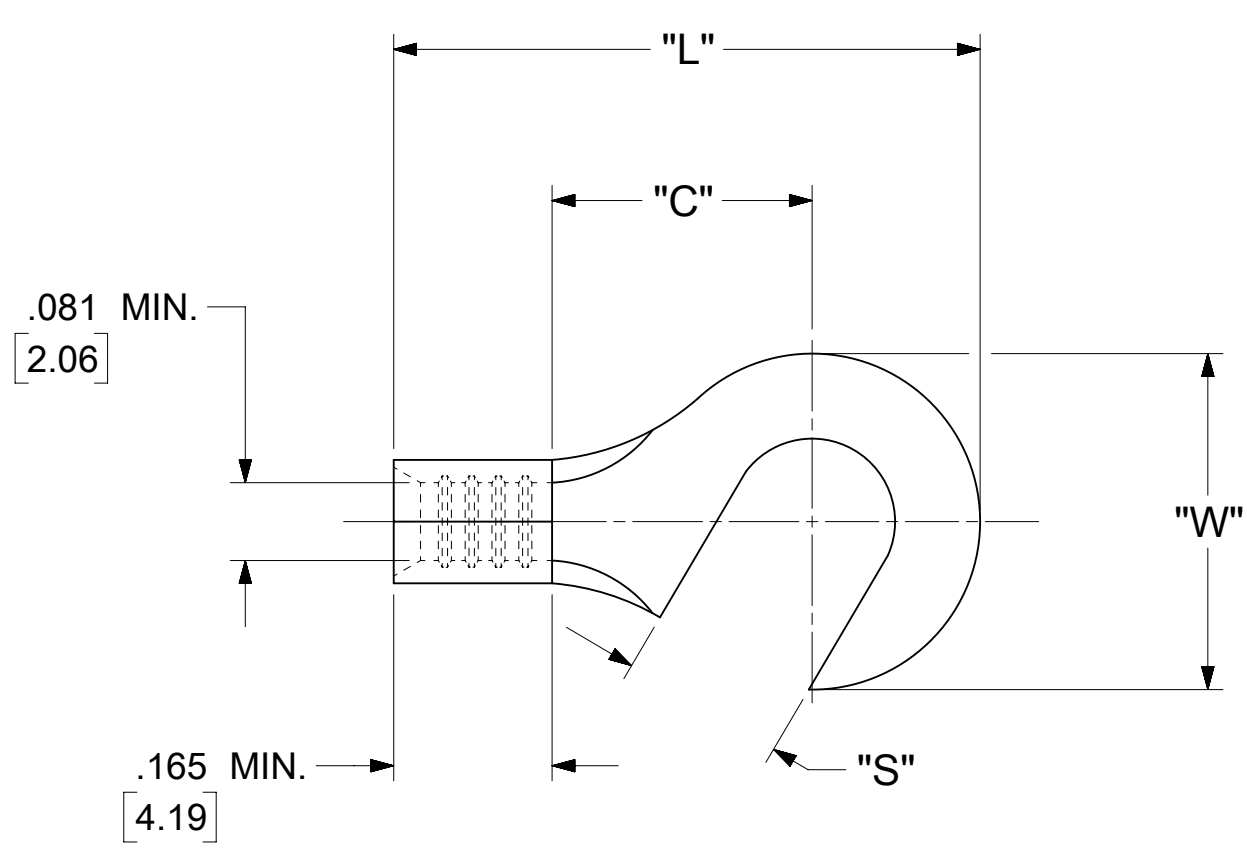


LOOSE PIECE		TAPE MOUNTED		SPECIFICATIONS					
MATERIAL NUMBER	ENGINEERING NUMBER	MATERIAL NUMBER	ENGINEERING NUMBER	STUD SIZE	"S" ±.005 [0.13]	"W" ±.010 [0.25]	"C" MIN.	"L" MAX.	"H"
191780008	BB-119-06	---	---	6	.146 [3.71]	.350 [8.89]	.271 [6.88]	.677 [17.20]	1.155 [29.34]
191780010	BB-119-08	191780011	BB-119-08T	8	.173 [4.39]				
191780012	BB-119-10	191780013	BB-119-10T	10	.198 [5.03]				



PARTS ON TAPE

- NOTES:**
- MATERIAL:
 TERMINAL: COPPER (STOCK TKN .031±.001 [0.79])
 PLATING: ELECTRO-TIN (.0003 MIN).
 - WIRE SIZE: 16 -14 AWG
 1.0 - 2.5 MM²
 - "UL" LISTING #E32244
 "CSA" LISTING #18689
 - ALL DIMENSIONS IN INCHES/[MM].
 - PARTS ARE ROHS COMPLIANT.
 - DIMS. SHOWN ARE FOR REFERENCE ONLY.

SYMBOLS ▽ = 0 ▽ = 0 ▽ = 0 ▽ = 0 ▽ = 0 ▽ = 0 ▽ = 0 ▽ = 0 ▽ = 0 ▽ = 0 ▽ = 0	THIS DRAWING CONTAINS INFORMATION THAT IS PROPRIETARY TO MOLEX ELECTRONIC TECHNOLOGIES, LLC AND SHOULD NOT BE USED WITHOUT WRITTEN PERMISSION			
	DIMENSION UNITS		SCALE	
	INCH/MM		NTS	
	GENERAL TOLERANCES (UNLESS SPECIFIED)			
	4 PLACES	±	---	±
	3 PLACES	±	---	±
2 PLACES	±	0.13	±	
1 PLACE	±	0.25	±	
0 PLACES	±	---	±	
ANGULAR TOL	±	0.5 °		
DRAFT WHERE APPLICABLE MUST REMAIN WITHIN DIMENSIONS		THIRD ANGLE PROJECTION		
		DRAWING SERIES		
		C-SIZE 19178		
CURRENT REV DESC:		EC NO: 625848		
		DRWN: ABENJAMINLW 2019/09/13		
		CHK'D: GROJAS01 2019/10/17		
		APPR: JMACNEIL 2019/10/18		
INITIAL REVISION:		DRWN: KO 1984/10/15		
APPR:				
DOCUMENT NUMBER		DOC TYPE DOC PART REVISION		
BBCD10102		PSD 001 A		
MATERIAL NUMBER		CUSTOMER		
SEE TABLE		GENERAL MARKET		
SHEET NUMBER		1 OF 1		