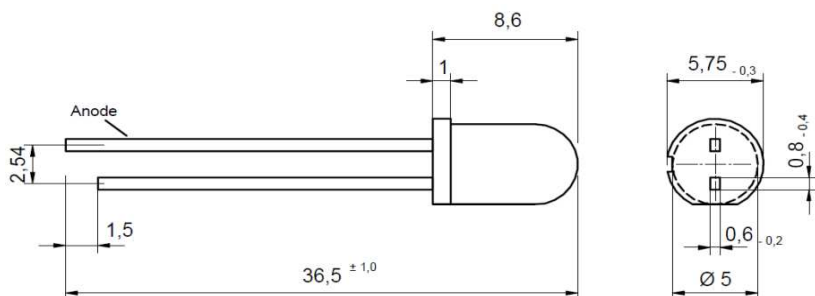


## Peak Emission Wavelength: 1450nm



### Description

- Standard 5mm plastic lens package housed without standoff leads
- Type: MQW
- High power
- High speed infrared

### Application

- Optical communication
- Safety equipment
- Automation

## Absolute Maximum Ratings (Ta=25°C)

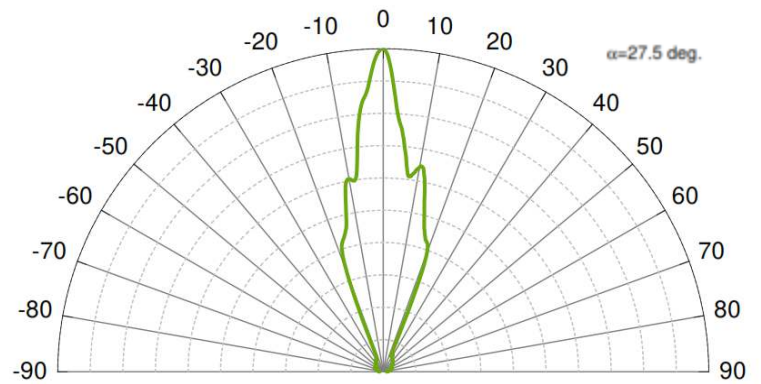
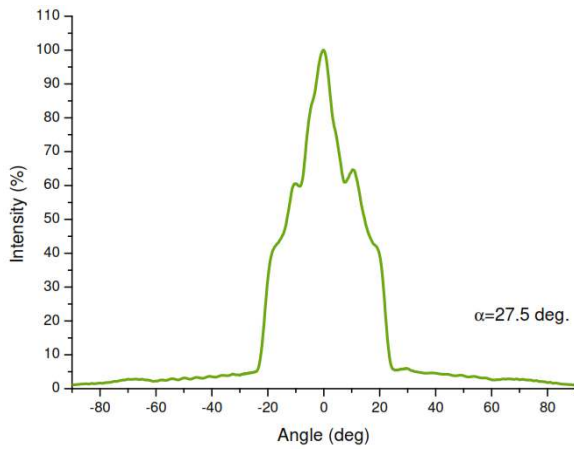
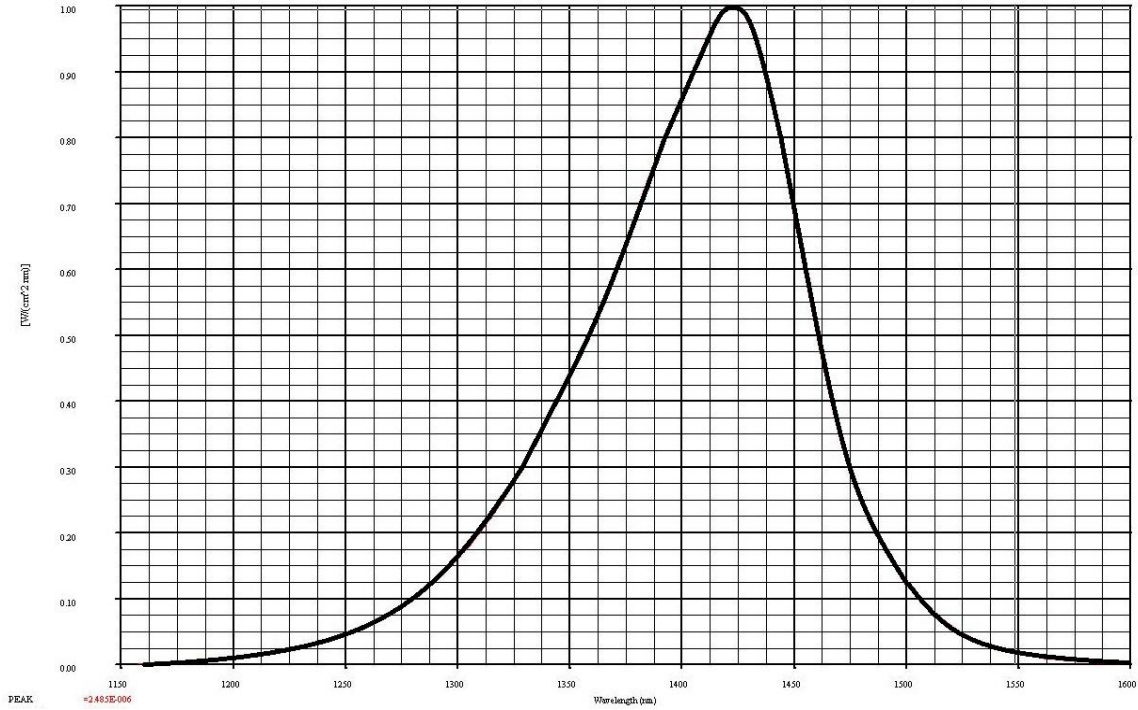


| ITEMS                       | TEST CONDITIONS       | SYMBOL | RATINGS     | UNIT |
|-----------------------------|-----------------------|--------|-------------|------|
| Forward DC Current          |                       | If     | 100         | mA   |
| Peak Forward Current        | (tp ≤ 50us, tp/T=1/2) | Ifp    | 200         | mA   |
| Power Dissipation           |                       | Pd     | 150         | mW   |
| Operating Temperature Range |                       | Top    | -20 to +80  | °C   |
| Storage Temperature Range   |                       | Tstg   | -55 to +100 | °C   |
| Lead Soldering Temperature  | t < 5s, 3mm from case | Tslg   | 260         | °C   |

## Electrical & Optical Characteristics (Ta = 25°C)

| ITEMS                     | SYMBOL | CONDITIONS | MIN | TYP  | MAX | UNIT |
|---------------------------|--------|------------|-----|------|-----|------|
| Forward Voltage           | Vf     | If=20mA    | --  | 0.8  | --  | V    |
| Forward Voltage           | Vf     | If=100mA   | --  | 1    | 1.2 | V    |
| Reverse Voltage           | Vr     | Ir=10uA    | 5   | --   | --  | V    |
| Radiant Power             | Φe     | If=20mA    | --  | 3.6  | --  | mW   |
| Radiant Power             | Φe     | If=100mA   | --  | 13   | --  | mW   |
| Peak Wavelength           | λp     | If=20mA    | --  | 1450 | --  | nm   |
| Spectral Bandwidth at 50% | Δλ0.5  | If=20mA    | --  | 150  | --  | nm   |
| Viewing Angle             | φ      | If=20mA    | --  | 20   | --  | deg  |
| Switching Time            | tr, tf | If=20mA    | --  | 40   | --  | ns   |

SPECTRAL RESPONSE



RADIATION PATTERN