

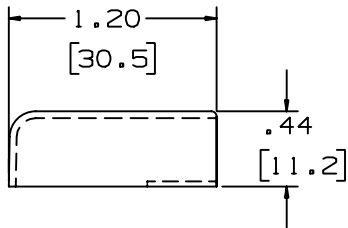
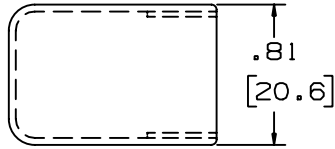
THIS COPY IS PROVIDED ON A RESTRICTED BASIS AND IS NOT TO BE USED IN ANY WAY DETRIMENTAL TO THE INTERESTS OF PANDUIT CORP.

| | |
|-------------|----------------------------------|
| PANDUIT P/N | WEIGHT |
| ECF3 | .35 LB/ 100PCS. 159g/ 100PCS. |



NOTES:

1. SEE CURRENT CATALOG FOR ADDITIONAL PART SUFFIXES TO INDICATE COLOR AND OR PACKAGE QUANTITY.
2. DIMENSIONS IN PARENTHESIS ARE IN METRIC.



CAD FILENAME/LAYERS D34019BD_DC_ECF3_06C.PRT

PANDUIT CORP. TINLEY PARK, ILLINOIS
 END CAP FITTING
 (ECF3)
 CUSTOMER DRAWING

| REV | DATE | BY | CHK | DESCRIPTION | ECN | R | CUST | SUP | | | | | | | | | | | | | | | | | | | |
|-----|----------|------|------|---|----------|---|------|------|--|---|---|--|--|-------------------------|--|--|------------------|--|--|--|--|--|--|--|--|--|--|
| 3 | 7-2-02 | JHNU | RMHI | C. REVISED MATERIAL IN DRAWING TITLE BLOCK. | 34019-11 | | RGRO | RGRO | | | | | | | | | | | | | | | | | | | |
| 2 | 8-25-00 | JHNU | HIW | B. REVISED AND REDRAWN. | 34019-11 | | HIW | HIW | | | | | | | | | | | | | | | | | | | |
| 1 | 11-24-87 | LDS | WJB | A. ADDED PARTS ECF3E1 AND ECF3LI | 34019-11 | | 1 | WJB | | | | | | | | | | | | | | | | | | | |
| R | 6-11-86 | RN | WJB | RELEASED TO PRODUCTION | 34019-11 | | R | WJB | | | | | | | | | | | | | | | | | | | |
| | | | | | | | | | | UNLESS OTHERWISE SPECIFIED, DIMENSIONAL TOLERANCES ARE: (.X) ± (.XXX) ± (.XX) ±.03(.8) ANGLES ± | UNLESS OTHERWISE SPECIFIED, ALL DIMENSIONS ARE GIVEN IN INCHES, THIRD ANGLE PROJECTION. | | | | | | | | | | | | | | | | |
| | | | | | | | | | | DRAWN BY RN | MAT'L: ABS | | | SCALE FULL | | | | | | | | | | | | | |
| | | | | | | | | | | DATE 6-4-86 | | | | DRAWING NO. 34019-11 | | | DWG SIZE A | | | | | | | | | | |
| | | | | | | | | | | CHK'D WJB | | | | | | | | | | | | | | | | | |