

PART NUMBER	REV	FIRST USED	TERMINATOR	FEED TYPE	DESCRIPTION
1339745-1	A		BENCH & LEADMAKER	MECH POST FEED	HD-I APPLICATOR
7-1339745-1	A		BENCH & LEADMAKER	MECH POST FEED	-1 AND SPARE PARTS
7-1339745-7	A		-	-	SPARE PARTS KIT

CRIMP DATA INARCA TERMINAL INARCA CRIMP SPECS

TERMINAL NAME: INAR-SAFETY TERM 4.8

CRIMP	SIZE	TYPE	RANGE
WIRE	2.54 [0.100 IN]	F	0.50-1.50mm ²
INSUL	3.94 [0.155 IN]	F	1.90-3.30 [0.075-.130 IN]
WIRE STRIP LENGTH	4.50 [0.177 IN]		APPL INSTRUCTION 408-8323

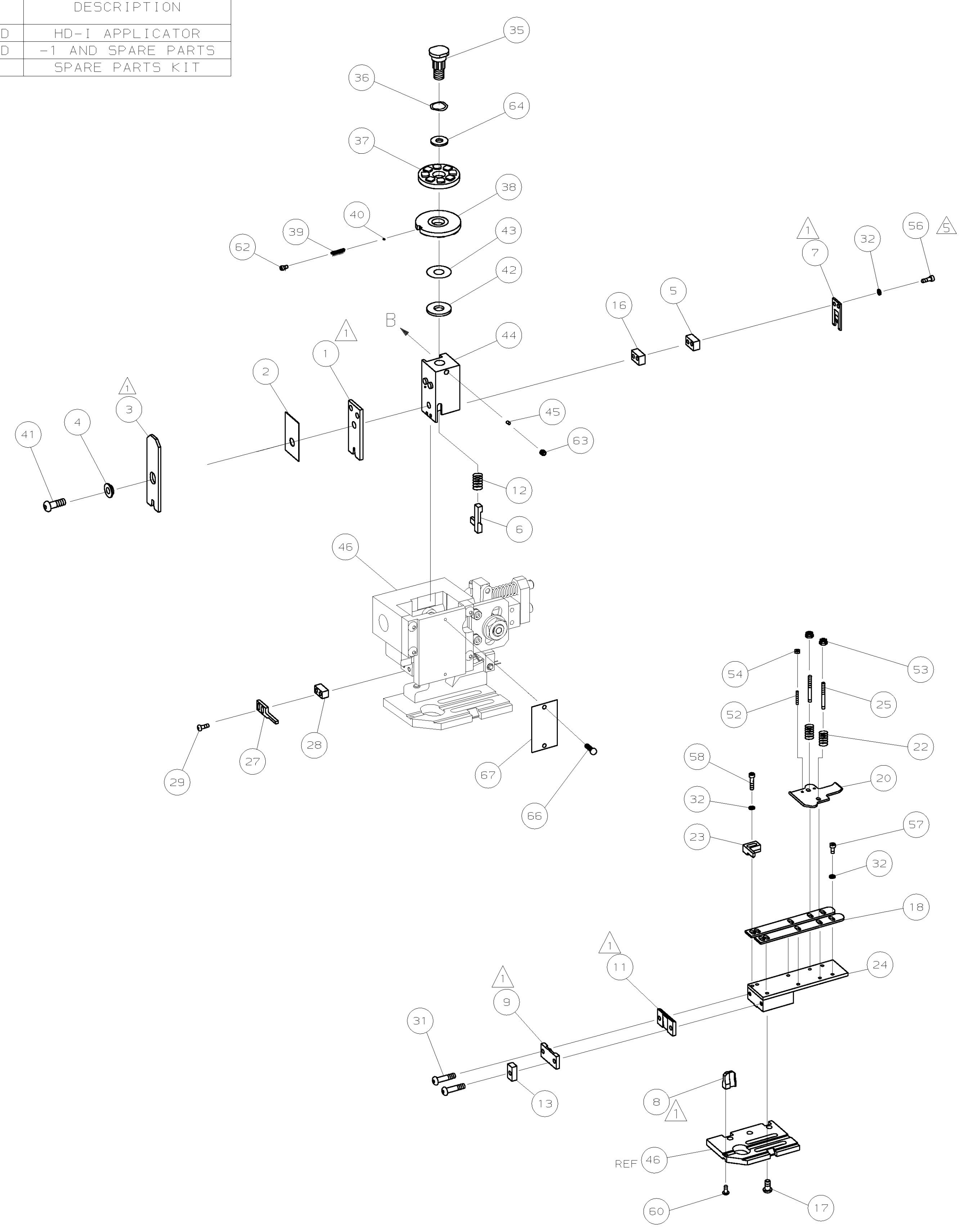
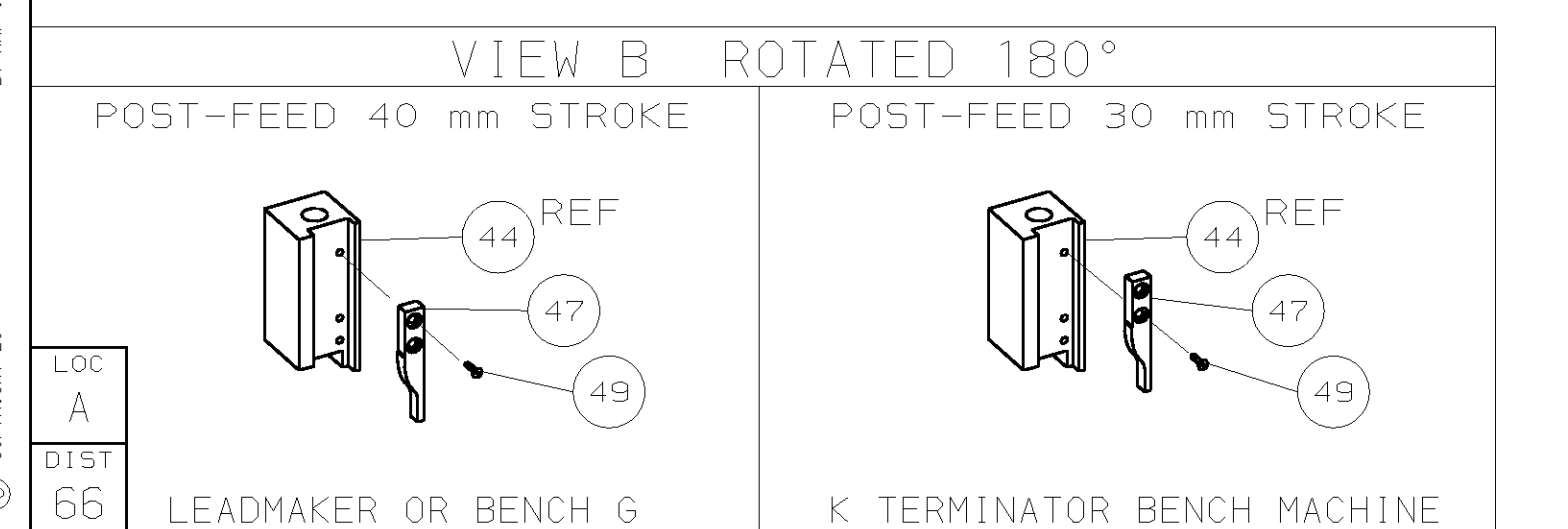
TERMINAL	INARCA APPLICATOR	FEED
APPL SPEC SHEET 11453	4	18.75 [0.738 IN]

TERMINALS APPLIED

AMP PN	MFR PN	-	-	-
1572527-1	0011453101	-	-	-
1572527-2	0011453001	-	-	-
1572527-3	0111453001	-	-	-
1572527-4	0111453101	-	-	-
1572527-5	0911453001	-	-	-

WIRE SIZE	CRIMP HEIGHT	PIN PN & LENGTH [IN]
1.50mm ²	1.45 ±0.05 [0.057 ±0.002 IN]	7-354778-6 [0.2875]
1.00mm ²	1.35 ±0.05 [0.053 ±0.002 IN]	8-354778-2 [0.2905]
0.75mm ²	1.25 ±0.05 [0.049 ±0.002 IN]	9-354778-1 [0.2950]
0.50mm ²	1.15 ±0.05 [0.045 ±0.002 IN]	354779-2 [0.3000]

- RECOMMENDED SPARE PARTS.
- 2. GREASE RAM, CAM, CAM FOLLOWER AND FEED ROD LIGHTLY.
- 3. LUBRICATE DAILY PER THE APPLICATOR INSTRUCTION SHEET SUPPLIED WITH THE APPLICATOR.
- 4. ALL CRIMP DATA PROVIDED BY INARCA S.p.A. TENSILE VALUE FOR 1.50mm² & 1.00mm² NOT ACHIEVABLE.
- 5. CUT TO LENGTH AT ASSY.



QTY	REQD PER ASSY	PART NO	DESCRIPTION	ITEM NO	
-	1	1	1339745	PRINT, APPLICATOR LOG SHEET	73
-	1	1	1338705-2	DOCUMENTATION PACKAGE	72
-	-	-	-	-	71
-	-	-	-	-	70
-	-	-	-	-	69
-	-	-	-	-	68
-	1	1	461264-1	PLATE, IDENTIFICATION	67
-	2	2	21017-2	SCR,DRIVE (#2X.19) ID PLATE	66
-	-	-	-	-	65
-	1	1	986950-1	WASHER, FLAT PRECISION	64
-	1	1	3-18031-0	SCR,SKT SET (M6X6) RAM	63
-	1	1	18023-9	SCR,SKT CAP (M4X6) CP D5C	62
-	-	-	-	-	61
-	1	1	18024-7	SCR,BHC (M4X10) ANVIL	60
-	-	-	-	-	59
-	2	2	1-18023-3	SCR,SHC (M4X16) HOLD DOWN	58
-	5	5	18023-9	SCR,SHC (M4X6) STRIP GUIDE	57
-	2	2	1-18023-3	SCR,SHC (M4X16) SLUG BLADE	56
-	-	-	-	-	55
-	2	2	18029-1	NUT, HEX (M3) DRAG	54
-	2	2	986965-1	NUT, HEX SL (M4) DRAG STUD	53
-	2	2	2-18032-2	SCR,SKT SET (M3X10) DRAG	52
-	-	-	-	-	51
-	-	-	-	-	50
-	1	1	18024-3	SCR,BHC (M3X10) CAM	49
-	-	-	-	-	48
-	1	1	1338676-1	CAM, POST-FEED 30 & 40 mm ST	47
-	1	1	1338662-1	APPLICATOR, BASIC (SUBASSY)	46
-	1	1	690191-1	PLUG, NYLON	45
-	1	1	1320998-1	RAM	44
-	1	1	690125-1	WASHER, LAMINATED	43
-	1	1	690124-4	WASHER, RAM	42
-	1	1	2-18024-6	SCREW,BHC (M8X25) CRIMPER	41
-	1	1	23241-1	BALL, STEEL	40
-	1	1	2-22278-7	SPRING, COMPRESSION	39
-	1	1	1320922-1	DISC, INSULATION	38
-	1	1	354777-1	WIRE DISC, PLASTIC	37
-	1	1	22480-5	WASHER, SPRING	36
-	1	1	690212-1	POST, RAM	35
-	-	-	-	-	34
-	-	-	-	-	33
-	9	9	18025-2	WASHER, LOCK (M4) SHEAR BL	32
-	2	2	1-18024-0	SCR,BHC (M4X20) SHEAR PL	31
-	-	-	-	-	30
-	2	2	18024-8	SCR,BHC (M4X12) STRIPPER	29
-	1	1	3-690451-2	SPACER, STRIPPER	28
-	1	1	240639-1	STRIPPER	27
-	-	-	-	-	26
-	2	2	1320906-1	DRAG, STUD	25
-	1	1	1320995-1	PLATE, STRIP GUIDE	24
-	1	1	240825-9	PLATE, STRIP HOLD DOWN	23
-	2	2	4-22281-1	SPRING, DRAG	22
-	-	-	-	-	21
-	1	1	1338665-1	DRAG, STOCK	20
-	-	-	-	-	19
-	2	2	1338663-5	GUIDE, LOWER STRIP	18
-	4	4	1-18024-8	SCR,BHC (M6X12) STRIP 6D PL	17
-	1	1	1338708-1	SPACER, SLUG BLADE	16
-	-	-	-	-	15
-	-	-	-	-	14
-	1	1	1-690481-4	SPACER, HOLD DOWN	13
-	1	1	23846-1	SPRING, HOLD DOWN	12
-	1	1	240644-1	PLATE, REAR SHEAR	11
-	-	-	-	-	10
-	1	1	690482-8	PLATE, FRONT SHEAR	9
-	1	2	1-1333218-7	ANVIL	8
-	1	1	1-690474-0	BLADE, SLUG	7
-	1	1	1-455892-2	HOLD DOWN, TERMINAL	6
-	1	1	2-240641-4	SPACER, SLUG BLADE	5
-	1	1	238009-1	SPACER, BLOCK CRIMPER	4
-	1	2	1-456134-2	CRIMPER, INSULATION	3
-	1	1	455888-5	SPACER, CRIMPER	2
-	1	2	456407-5	CRIMPER, WIRE	1

QTY	REQD PER ASSY	PART NO	DESCRIPTION	ITEM NO
-	77	-71	-1	

DIMENSIONS: mm [INCHES] MATL - HT TR - FIN -
 DO NOT SCALE PRINT.
 TOLERANCES UNLESS OTHERWISE SPECIFIED:
 1 PLC DEC ±
 2 PLC DEC ±
 3 PLC DEC ±
 ANGLES ±
 SURF TEXTURE: ✓
 REMOVE BURRS, BREAK SHARP EDGES RO.38 MAX

DR 02JUL04 APP 02JUL04 F.BACKHURST
 M.CLIFFORD
 CHK - REL 04-08-04 M.CLIFFORD
AMP Tyco Electronics Harrisburg, PA 17105-3608
 NAME END FEED HD-I APPLICATOR MACHINE REF HD-I APPL
 SCALE - DWG NO 1339745 SHEET REV 1 OF 1 A
 CASE CODE 00779 CUSTOMER AND ASSEMBLY DRAWING RESTRICTED TO

THIS DRAWING IS A CONTROLLED DOCUMENT.

LAYOUT L1529109

SET UP GAGE 458638-3

RELEASED FOR PUBLICATION BY AMP INCORPORATED. ALL RIGHTS RESERVED.

THIS DRAWING IS UNRELEASED. COPYRIGHT © 2006