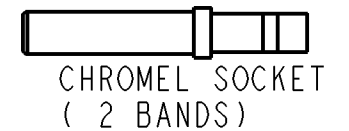
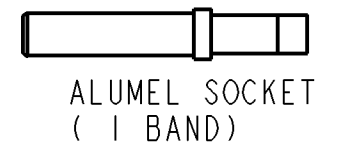
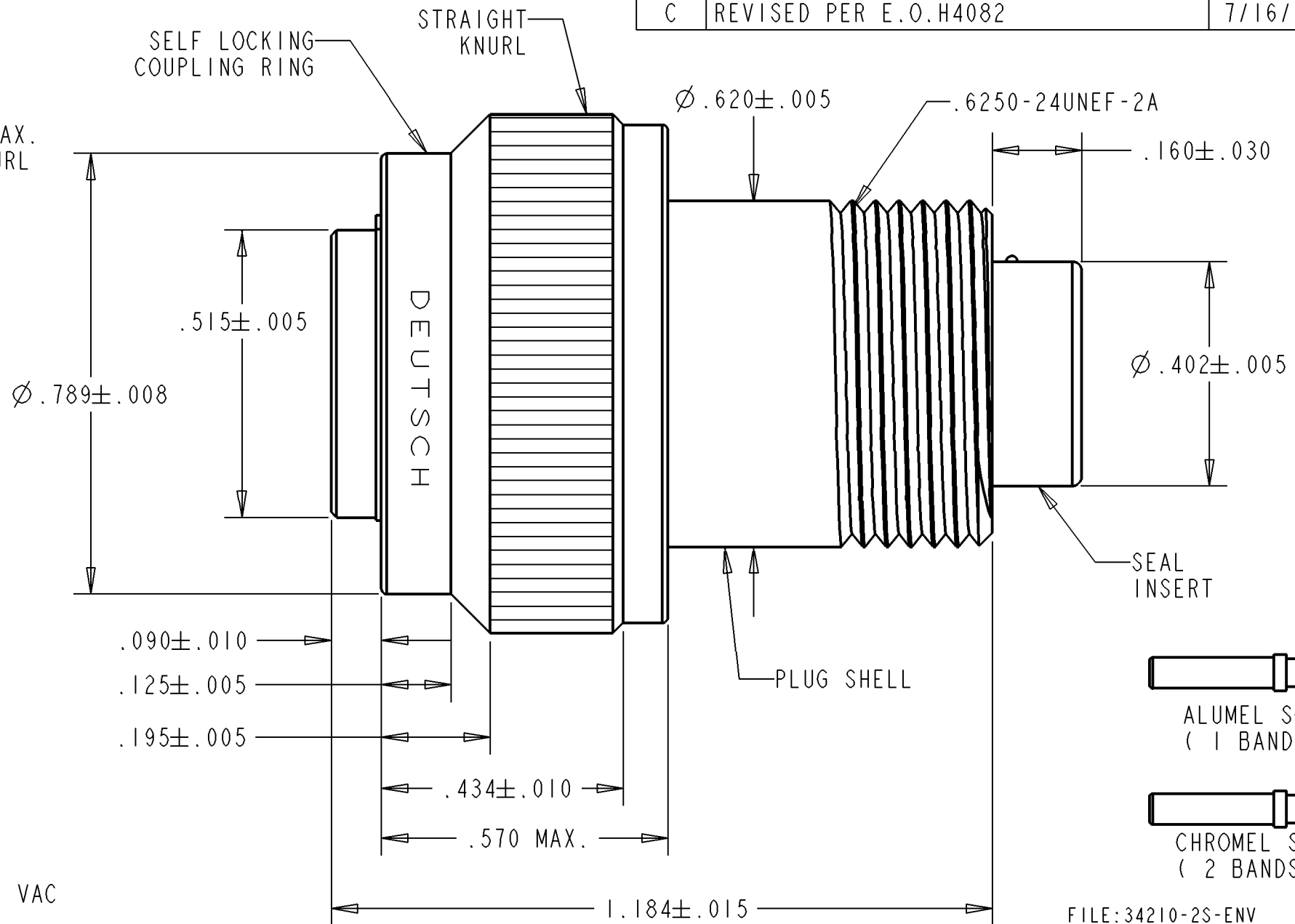
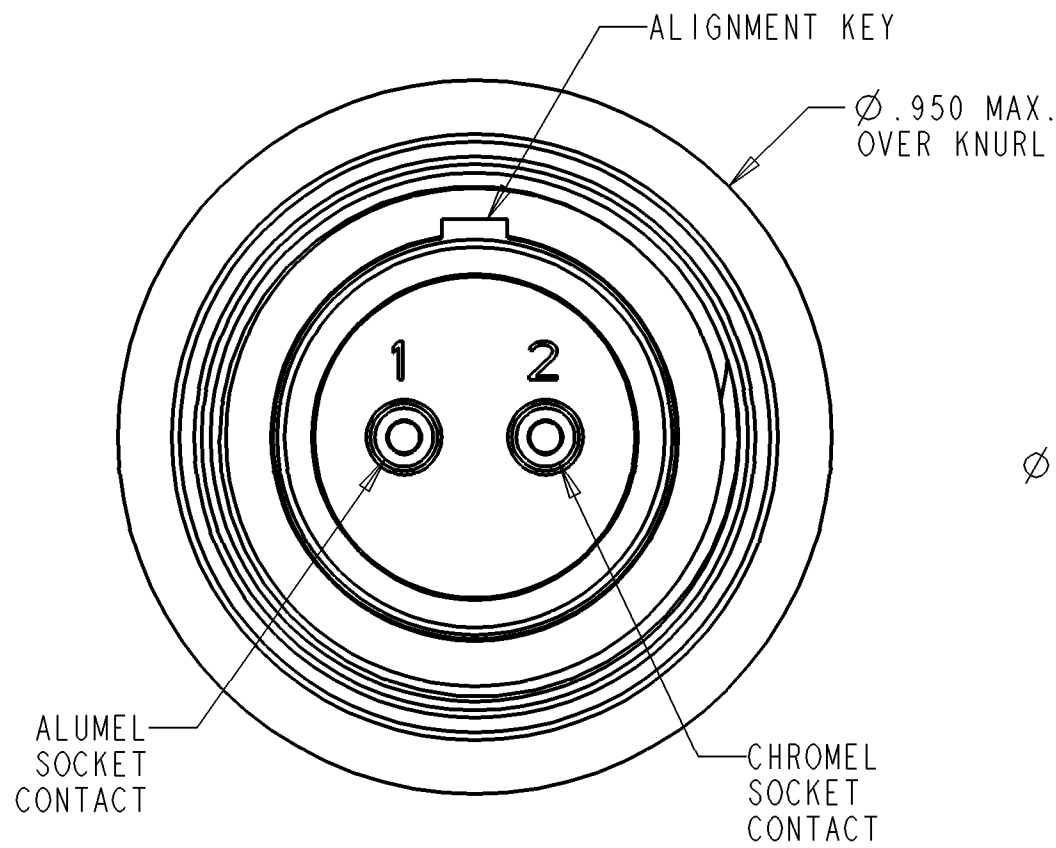


REV	DESCRIPTIONS	DATE	APPROVED
A	REVISED PER E.O.H3767	11/25/02	F.B.
B	REVISED PER E.O.H3998	1/26/04	F.B.
C	REVISED PER E.O.H4082	7/16/04	F.B.



FILE: 34210-2S-ENV


- DIMENSIONS ARE IN INCHES UNLESS OTHERWISE SPECIFIED.
- INSULATION RESISTANCE: >5000 MEGOHM @ 500 VDC
DIELECTRIC WITHSTANDING VOLTAGE: NO BREAKDOWN @ 1000 VAC
- SOCKET CONTACTS & INSERT/REMOVAL TOOL SHIPPED SEPARATELY.
- MATERIAL:
SHELL & COUPLING RING - 300 SERIES STAINLESS STEEL
INSERT ASSEMBLY - HIGH TEMP PLASTIC (500°F MAX)
SOCKET CONTACT - ALUMEL/CHROMEL
SEAL INSERT - FLOUROSILICONE ELASTOMER
- FINISH:
SHELL & COUPLING RING - PASSIVATION
SOCKET CONTACT - GOLD PLATED

NOTE(S):

	SIGNATURE & DATE
DR	S.LUI 9/10/02
CHK	F.BAUTISTA 9/10/02
PE	J.AGUILERA 9/10/02
APPD	J.AGUILERA 9/10/02
SCALE:	

CONNECTOR PLUG
THERMOCOUPLE
SOCKET UNIT
THREAD COUPLING
SPECIAL ARRANGEMENT
REAR RELEASE

ENVELOPE

CP	MATL CODE 78
DEUTSCH ENGINEERED INTERCONNECT SOLUTIONS  250 Eddie Jones Way Oceanside, CA 92054	
B	34210-2S
DWG SIZE	CAGE CODE 11139
	SHEET 1 OF 1