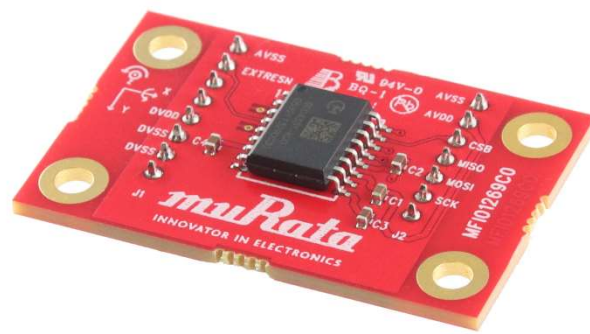


## SCC400T PCB SPECIFICATION



## SCC400T Chip Carrier PCB

The purpose of the SCC400T Chip Carrier PCB is to enable fast prototyping.

SCC400T Chip Carrier PCB includes:

- SCC400T sensor soldered on PCB
- PCB design #MFI01269 with pin headers and passive components

Please refer to SCC400T datasheet when using the Chip Carrier PCB.

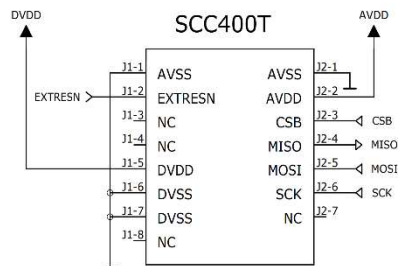


Figure 1. SCC400T PCB pinout and external connections.

Table 1. BOM of the SCC400T PCB.

Item	Qty	Ref	Part Name / type	Value
1	4	C1	Capacitor 0603 X7R -55C ... +125C	100 nF
2	2	C2-4	Capacitor 0603 X7R -55C ... +125C	1 $\mu$ F
3	1	U1	SCC400T Sensor	
4	1	J1	8-pin through hole pin header, pitch 100 mils, pin size 0.63x0.63mm, length ~5.85mm (example mating part: Samtec: SSQ-108-01-S-S)	
5	1	J2	7-pin through hole pin header, pitch 100 mils, pin size 0.63x0.63mm, length ~5.85mm (example mating part: Samtec: SSQ-107-01-S-S)	

Detailed pictures of the SCC400T PCB are presented on following pages:

- PCB layout
- Assembly drawings
- Circuit diagram

PCB mechanical dimensions:

- Width 42.9 mm
- Height 27.4 mm
- Height 13.8 mm (incl. components and pin headers)

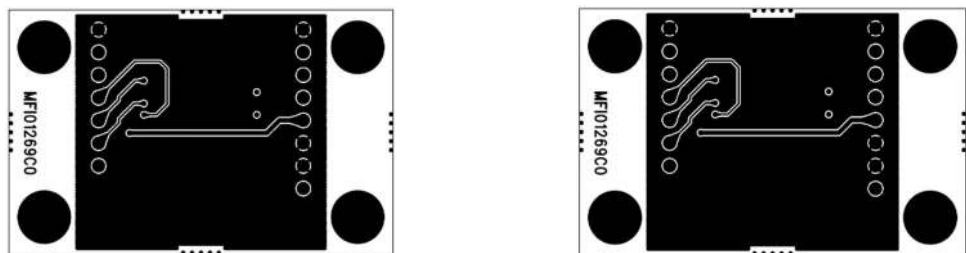


Figure 2. TOP (left) and BOTTOM (right) layout of SCC400T PCB (aspect ratio not 1:1).

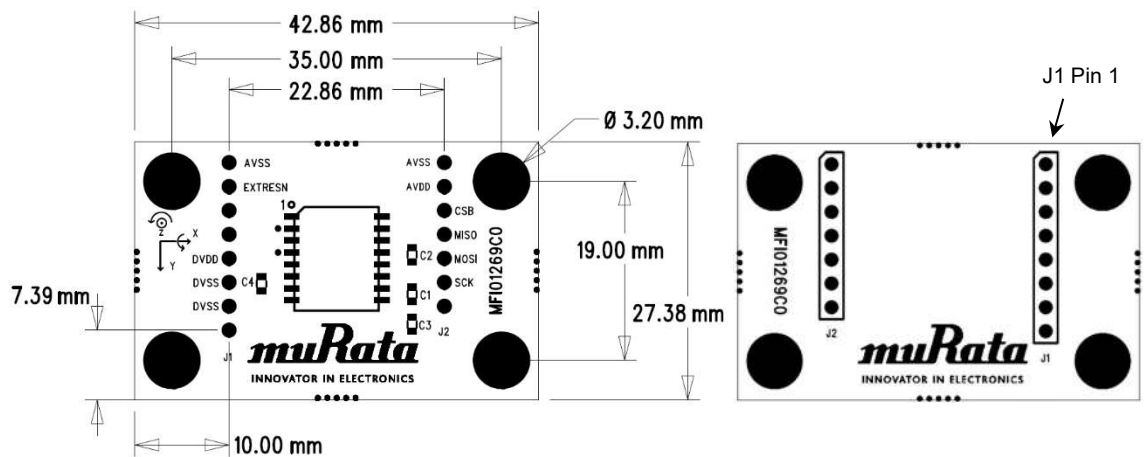


Figure 3. TOP (left) and BOTTOM (right) view assembly drawings for SCC400T PCB (aspect ratio not 1:1).

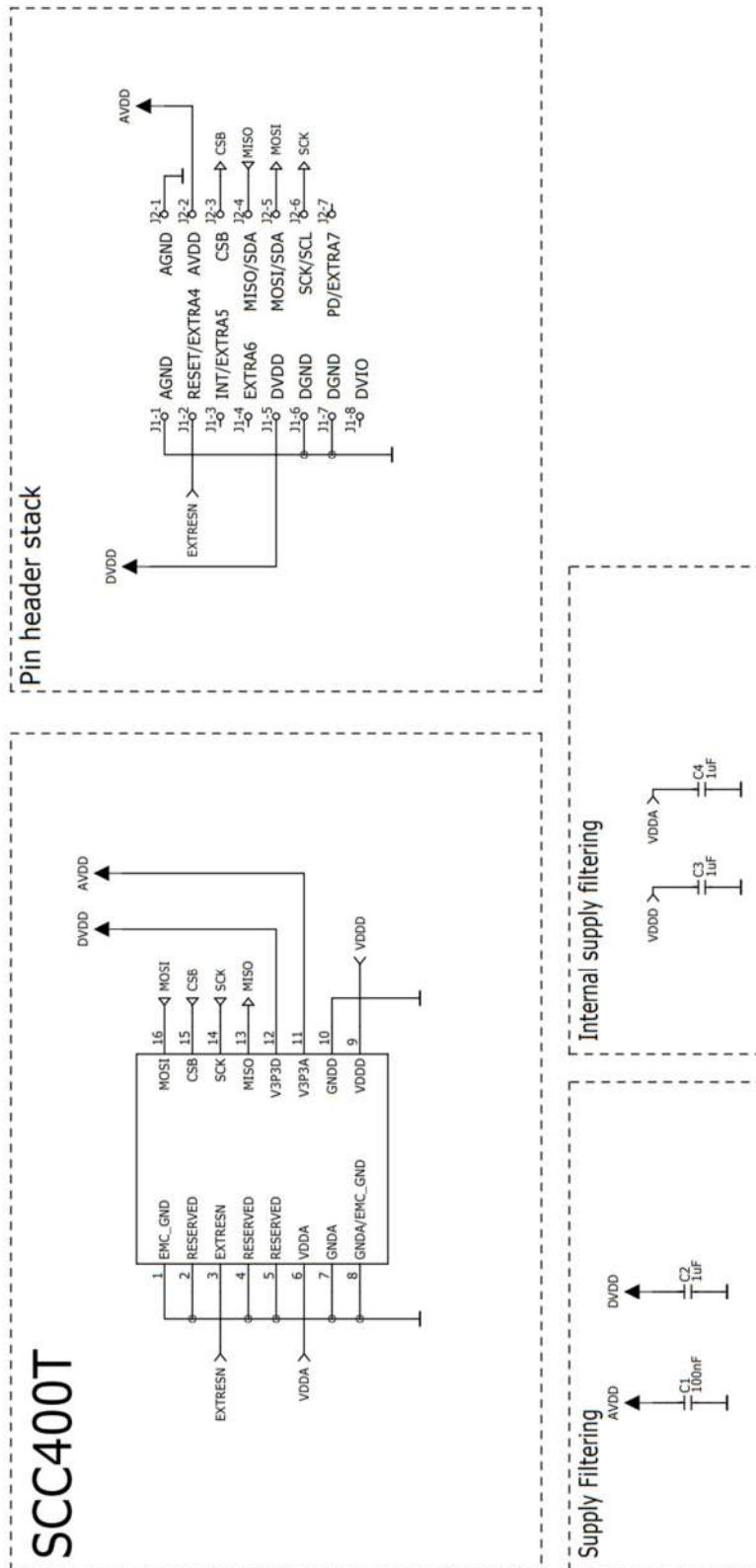


Figure 4. SCC400T PCB circuit diagram.