



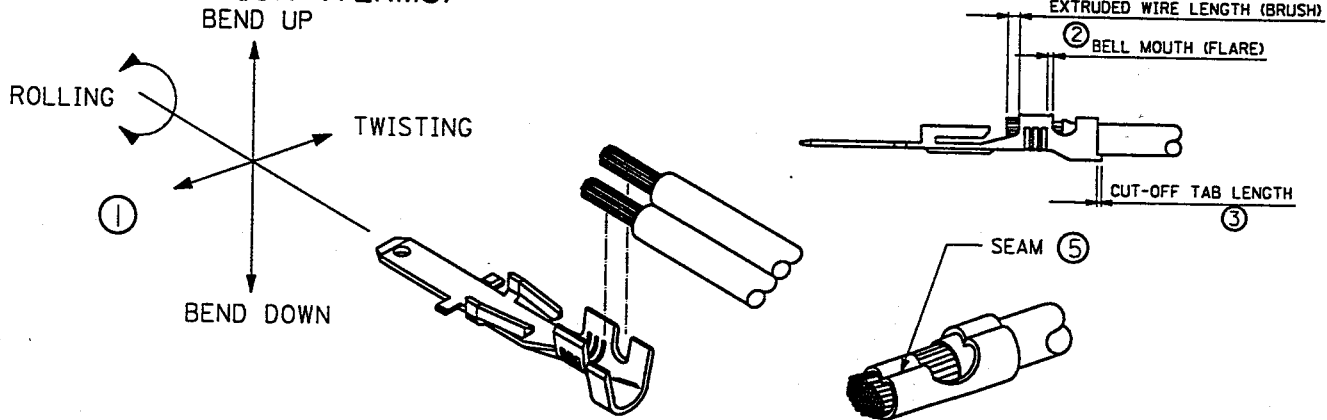
APPLICATION TOOLING TERMINATOR SPECIFICATION SHEET

A. SCOPE

THIS STANDARD SPECIFIES THE DIMENSIONS AFTER CRIMPING OF THE TERMINALS UNDERMENTIONED.

TERMINAL SERIES	WIRE SIZE	INSULATION DIAMETER		STRIP LENGTH	
		AWG	ENGLISH	(METRIC)	ENGLISH
43178-2001	14-18	.119 - .180	(3.02 - 4.57)	.156 - .218	(3.96 - 5.54)
43178-2001	18-DBL	.119 - .180	(3.02 - 4.57)	.156 - .218	(3.96 - 5.54)
-	-	-	(-)	-	(-)
-	-	-	(-)	-	(-)

B. DEFINITION (TERMS)



(2) 18 awg DBL WIRES
POSITION WIRES AT 45°
FROM ONE ANOTHER AS SHOWN
OR ON TOP OF EACH OTHER
DO **NOT** POSITION SIDE BY SIDE

INSULATION GRIP

CONDUCTOR GRIP

CORRECT POSITION

CORRECT POSITION

WRONG POSITION

NOTE:

*) IF THE CORRECT POSITION IS USED THEN YOU SHOULD NOT GET ANY WIRE STRANDS OUT OF THE CONDUCTOR CRIMP AREA.

*) IF THE WRONG POSITION IS USED THEN YOU ARE AT RISK OF STRANDS OF WIRE OUT OF THE CONDUCTOR CRIMP AREA.

DD-MM-YY
HH-MM-YY
Release App. Prod.
E.C.D. #12/0506
GRP *****
MFG. SH. REVISIONS
L.T.R.
A

DIMENSIONS SHOWN (METRIC) INCH

UNLESS OTHERWISE SPECIFIED
TOLERANCES: ANGULAR ± 1/2°

	INCH	METRIC
3 PLACE	± ---	---
2 PLACE	± ---	± ---
1 PLACE	---	± ---

DRAFT WHERE APPLICABLE MUST
REMAIN WITHIN DIMENSIONS

DRWG. BY MFS CHK'D. BY MFS
APP'D. BY SCALE /: /

▽ = ▼ = REVISE ONLY ON CAD SYSTEM

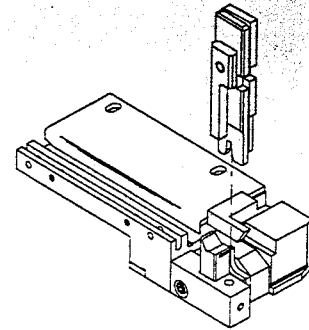
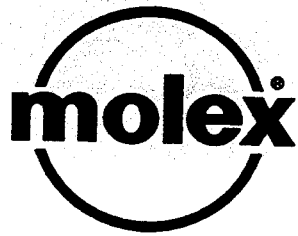
TITLE
Specification Sheet
Terminator

MOLEX INCORPORATED SHEET NO. DATE
LISLE, ILL. 60532 U.S.A. 1 OF 4 96/03/06

PART NO. 638406300 DRWG. NO. 638406300

FILE NAME 6384063 S80 THIS DRAWING CONTAINS INFORMATION THAT IS PROPRIETARY TO MOLEX INC. AND SHOULD NOT BE USED WITHOUT WRITTEN PERMISSION. DIV. SIZE AT A

CRIMP



APPLICATOR ASSEMBLY - PARTS LIST

ITEM	ORDER NO.	SIZE	ENG. NO.	DESCRIPTION	REQ'D
4	634430021	b	634430021	Mounting Key	1
5	11-18-5415	b	60842a111	Anvil Mount	1
10	11-40-4039	b	8302-5	Plunger Striker	1
11	638406011	b	638406011	Wire Stop	1
13	11-40-4068	b	8302-102	Drag Finger	1
14	11-40-4231	b	8329-10	Stop Finger	1
15	11-18-5440	b	60842a117	Rear Cover	1
16	11-40-4069	b	8302-103	Pivot Pin	2
17	11-40-4144	b	8302-110	Torsion Spring, Drag Finger	1
18	11-40-4145	b	8302-111	Torsion Spring, Stop Finger	1
19	637000539	b	637000539	HEAVY DUTY CUT-OFF PLUNGER SPRING	1
21	634430009	b	634430009	SCRAP CHUTE	1

TOOLING INFORMATION

ITEM	ORDER NO.	SIZE	ENG. NO.	DESCRIPTION	REQ'D
2	634430012	B	634430012	Front Plunger Retainer	1
3	634430002	B	634430002	Front Cutoff Plunger	1
6	634443217	b	634443217	Conductor Punch	1
7	634453262	b	634453262	Conductor Anvil	1
8	6344648-65	b	6344648-65	Insulation Punch (non-tip)	1
9	634454817	b	634454817	Insulation Anvil	1
10	638406370	/	638406370	Toolkit (above items)	0

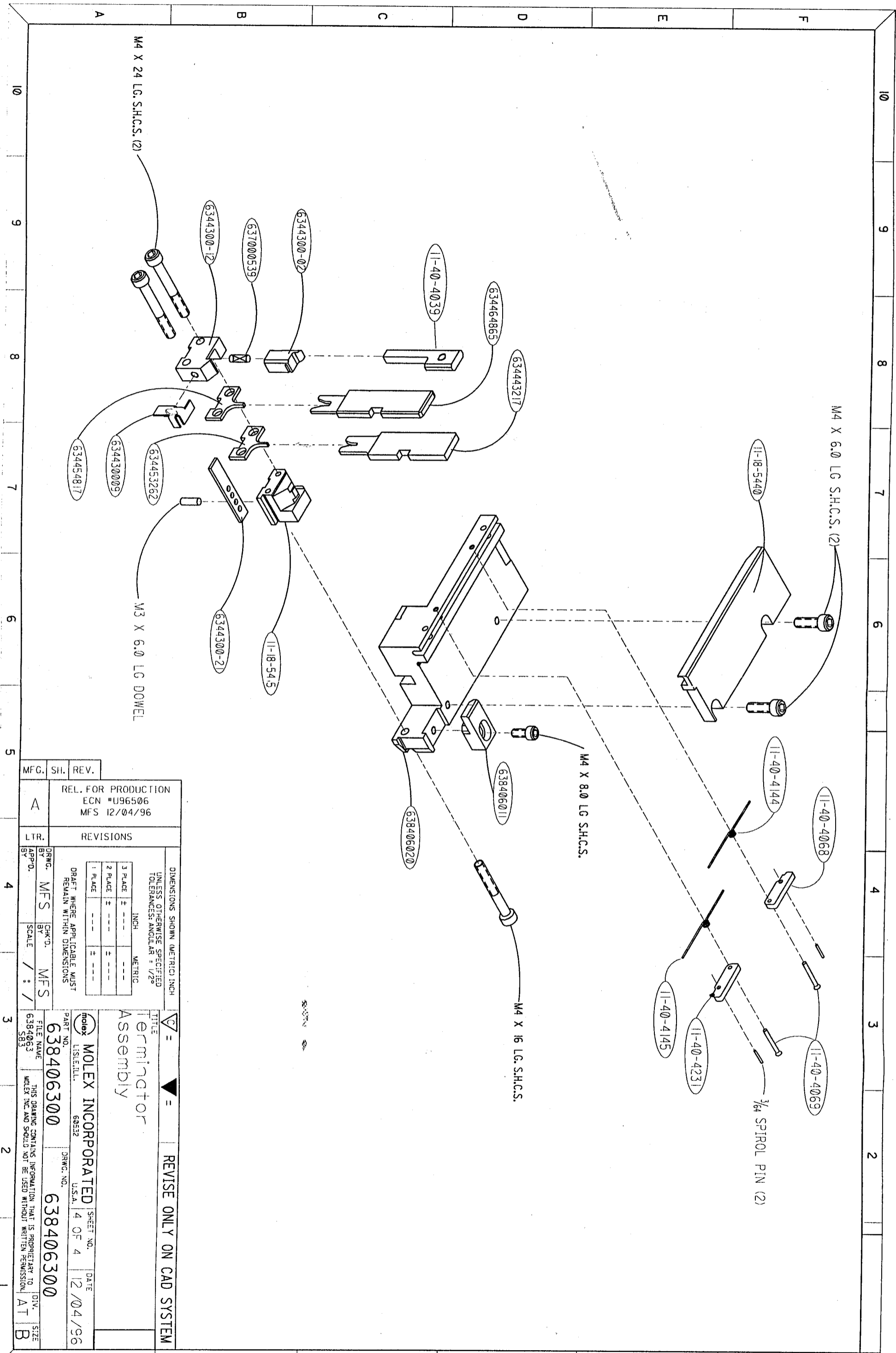
Collect THIS (no spec)

FRAME ASSEMBLY PARTS LIST

ITEM	ORDER NO.	SIZE	ENG. NO.	DESCRIPTION	REQ'D
20	638406020	C	638406020	Terminal Track	1

CRIMP

MFG. SH. REV.	RELEASE FOR PRODUCTION MFS 12-04-96 ECN #U96506	REVISIONS	DIMENSIONS SHOWN (METRIC) INCH		REVISIONS	
			UNLESS OTHERWISE SPECIFIED TOLERANCES: ANGULAR = 1/2°		REVISIONS	
A			INCH METRIC		TITLE	
			3 PLACE ± --- ---		BILL OF MATERIALS	
			2 PLACE ± --- ± ---		TERMINATOR	
			1 PLACE --- ± ---		MOLEX INCORPORATED	
			DRAFT WHERE APPLICABLE MUST REMAIN WITHIN DIMENSIONS		SHEET NO. DATE	
			DRWC. BY MFS		3 OF 4 2/04/96	
			CHK'D. BY MFS		PART NO. DRWG. NO.	
			SCALE /: /		638406300 638406300	
			FILE NAME		THIS DRAWING CONTAINS INFORMATION THAT IS PROPRIETARY TO MOLEX INC. AND SHOULD NOT BE USED WITHOUT WRITTEN PERMISSION.	
			6384063 S82		DIV. SIZE AT A	



MFG.	SII.	REV.
A		
REL. FOR PRODUCTION ECN #U96506 MFS 12/04/96		
LTR. REVISIONS		
DRWG. BY	MFS	CHK'D. BY
APPD.		
SCALE / : /		
DIMENSIONS SHOWN (METRIC) INCH		
UNLESS OTHERWISE SPECIFIED TOLERANCES: ANGULAR = 1/2°		
1 PLACE	±	---
2 PLACE	±	---
3 PLACE	±	---
DRAFT WHERE APPLICABLE MUST REMAIN WITHIN DIMENSIONS		
TITLE Terminator Assembly		
MOLEX INCORPORATED		
PART NO.	638406300	DRWG. NO.
FILE NAME	6384063	U.S.A.
THIS DRAWING CONTAINS INFORMATION THAT IS PROPRIETARY TO MOLEX INC. AND SHOULD NOT BE USED WITHOUT WRITTEN PERMISSION.		
SHEET NO. 4 OF 4		
DATE 12/04/96		
DIV. AT		
SIZE B		

CRIMP