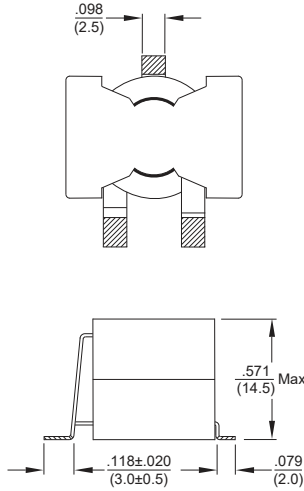
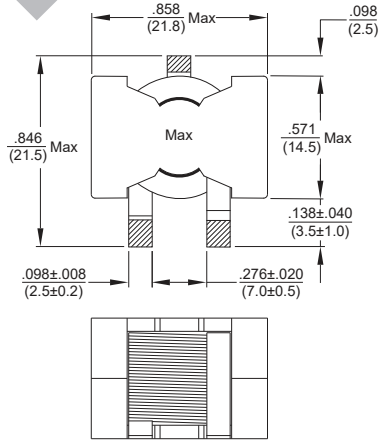




Flat Wire SMD Power Inductor

FWPQ2014



Features

- Flat Wire SMD Power Choke
- Ultra Low DCR
- High Saturation Current up to 60A
- Low Magnetic Loss

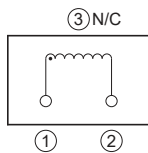
Electrical

Inductance Range: 2.2μH - 33.0μH
Tolerance: 20%
Test Frequency: 100KHz, 0.1V
Operating Temp: -40°C to +125 °C
Irms: Current at which the temperature rise will not exceed 40 °C above ambient
Isat: Current at which the inductance will drop by no more than 20% from its initial Inductance without current

Physical

Packaging: 100 per Reel | 400 per Carton
Marking: EIA Code

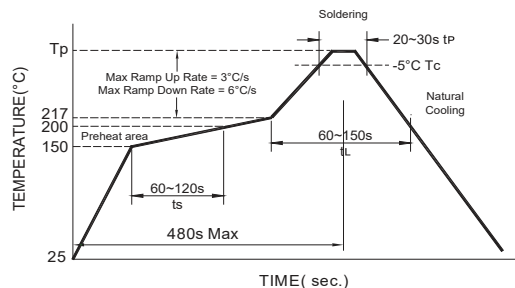
Schematic



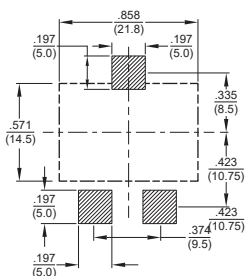
Allied Part Number	Inductance (μH) ±20%	DCR		Isat (A) Typical	Irms (A) Typical
		(mΩ) Typical	(mΩ) Max.		
FWPQ2014-2R2M-RC	2.2	1.70	2.20	60.0	28.0
FWPQ2014-2R6M-RC	2.6	1.70	2.20	49.0	28.0
FWPQ2014-3R3M-RC	3.3	3.28	3.80	48.0	24.0
FWPQ2014-4R7M-RC	4.7	3.28	3.80	35.0	24.0
FWPQ2014-5R6M-RC	5.6	3.28	3.80	30.0	24.0
FWPQ2014-6R8M-RC	6.8	6.60	7.30	34.0	18.0
FWPQ2014-8R2M-RC	8.2	6.60	7.30	29.0	18.0
FWPQ2014-100M-RC	10.0	6.60	7.30	23.0	18.0
FWPQ2014-150M-RC	15.0	8.60	9.50	18.0	16.0
FWPQ2014-160M-RC	16.0	8.60	9.50	18.0	16.0
FWPQ2014-220M-RC	22.0	8.60	9.50	13.0	16.0
FWPQ2014-330M-RC	33.0	8.60	9.50	9.00	16.0

All specifications subject to change without notice.

Reflow Soldering



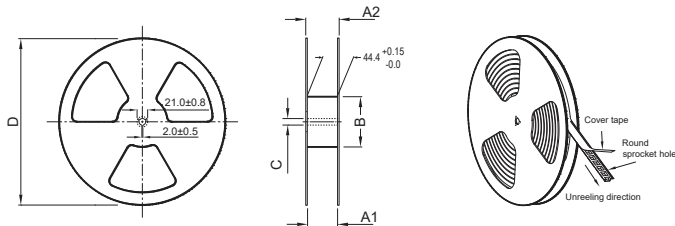
Recommended Land Pattern





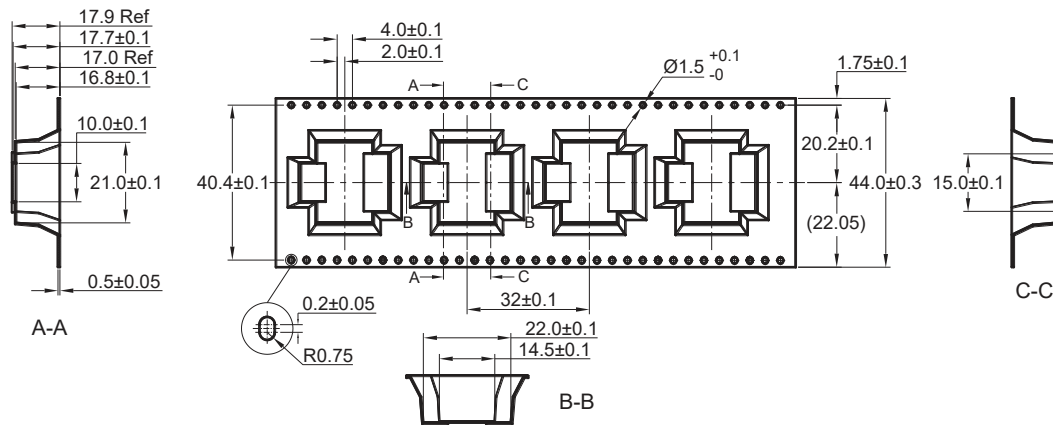
Packaging Information

Reel Dimension



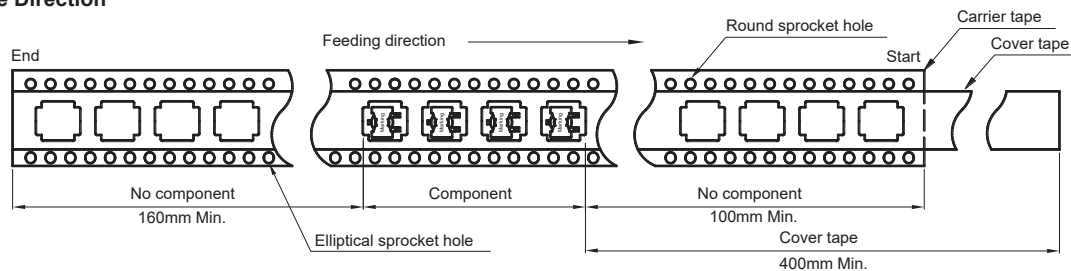
A1(mm)	A2(mm)	B(mm)	C(mm)	D(mm)
44.9 Min	50.4 Max	100 Min	13.0±0.5	330±2.0

Tape Dimension

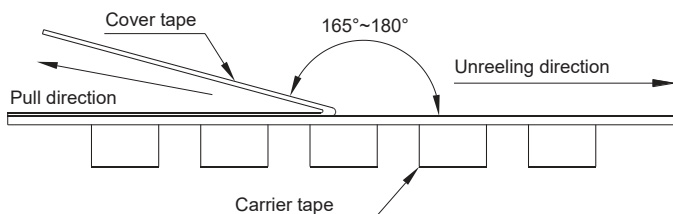


• Packing is referred to the international standard IEC 60286-3

Tape Direction



Tearing Off Force



- Cover tape peel force shall be 0.1 to 1.3N.
- Reference peel speed 300 ±10mm/min.