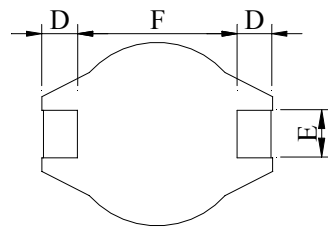
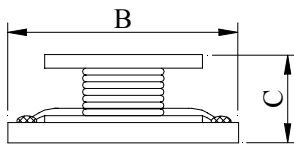
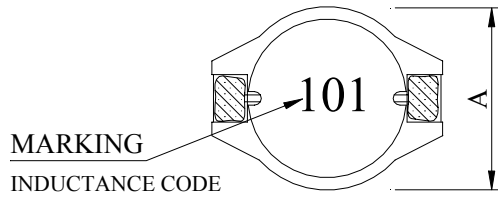


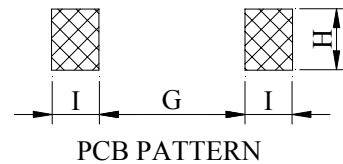
PRODUCT SPECIFICATION

Product Name	5022 SMD POWER INDUCTORS - OPEN TYPE	Page	1
TAMURA Part No.	TO5022-XXX	Rev. No.	0

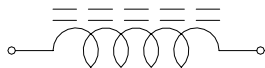
1. CONFIGURATION & DIMENSIONS :



A	: 15.00±0.3	m/m
B	: 18.40±0.3	m/m
C	: 7.00±0.5	m/m
D	: 2.40±0.2	m/m
E	: 2.20±0.2	m/m
F	: 13.30±0.3	m/m
G	: 12.70 REF.	m/m
H	: 2.80 REF.	m/m
I	: 3.00 REF.	m/m



2. SCHEMATIC DIAGRAM :



3. GENERAL SPECIFICATION :

- a) TEMP. RISE : 40°C TYP.
- b) RATED CURRENT : BASE ON TEMP. RISE & Δ LOA=10% TYP.
- c) STORAGE TEMP. : -40°C ~ +125°C
- d) OPERATING TEMP. : -25°C ~ +105°C
- e) RESISTANCE TO SOLDER HEAT : 260°C FOR 10 SECS.

PRODUCT SPECIFICATION

Product Name	5022 SMD POWER INDUCTORS - OPEN TYPE	Page	2
TAMURA Part No.	TO5022-XXX	Rev. No.	0

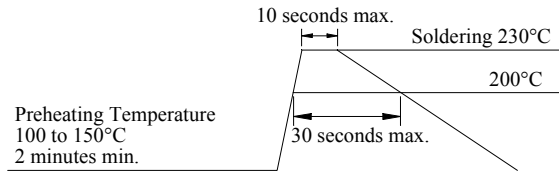
4. ELECTRICAL CHARACTERISTICS :

TAMURA Part No.	INDUCTANCE (μ H)	TEST FREQ. (HZ)	SRF (MHZ) TYP.	RDC (mOhm) MAX	IDC (A)
		L			
TO5022-1R0M	1.00 \pm 20%	100K	80.0	9	8.60
TO5022-2R2M	2.20 \pm 20%	100K	80.0	14	7.10
TO5022-3R3M	3.30 \pm 20%	100K	60.0	15	6.20
TO5022-5R6M	5.60 \pm 20%	100K	40.0	20	5.30
TO5022-100M	10.00 \pm 20%	100K	30.0	31	4.30
TO5022-150M	15.00 \pm 20%	100K	22.0	36	4.00
TO5022-220M	22.00 \pm 20%	100K	20.0	47	3.50
TO5022-330M	33.00 \pm 20%	100K	15.0	66	3.00
TO5022-470M	47.00 \pm 20%	100K	9.0	89	2.60
TO5022-680M	68.00 \pm 20%	100K	8.0	130	2.30
TO5022-101M	100.00 \pm 20%	100K	7.0	190	1.80

PRODUCT SPECIFICATION

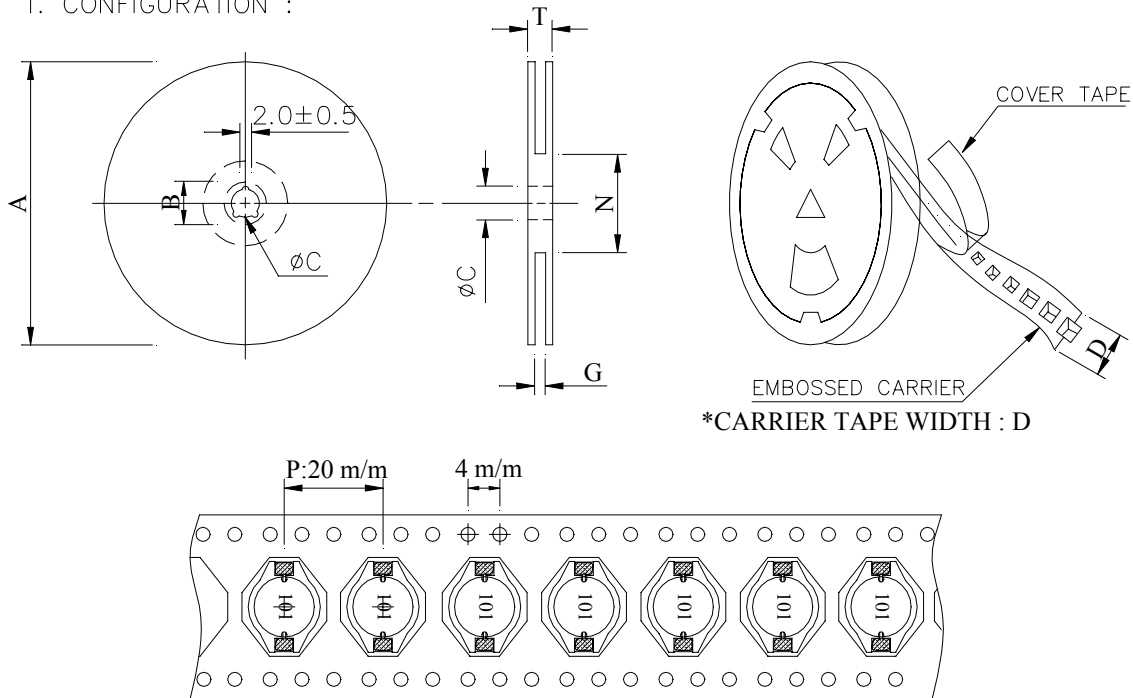
Product Name	5022 SMD POWER INDUCTORS - OPEN TYPE	Page	3
MURA Part No.	TO5022-XXX	Rev. No.	0

RECOMMENDED SOLDERING CONDITIONS REFLOW SOLDERINGS



PACKAGING INFORMATION :

1. CONFIGURATION :



2. DIMENSIONS : (m/m)

STYLE	A	B	C	D	G	N	T
13 - 32	330	21±0.8	13±0.5	32	34 MAX	100 MIN	38.4

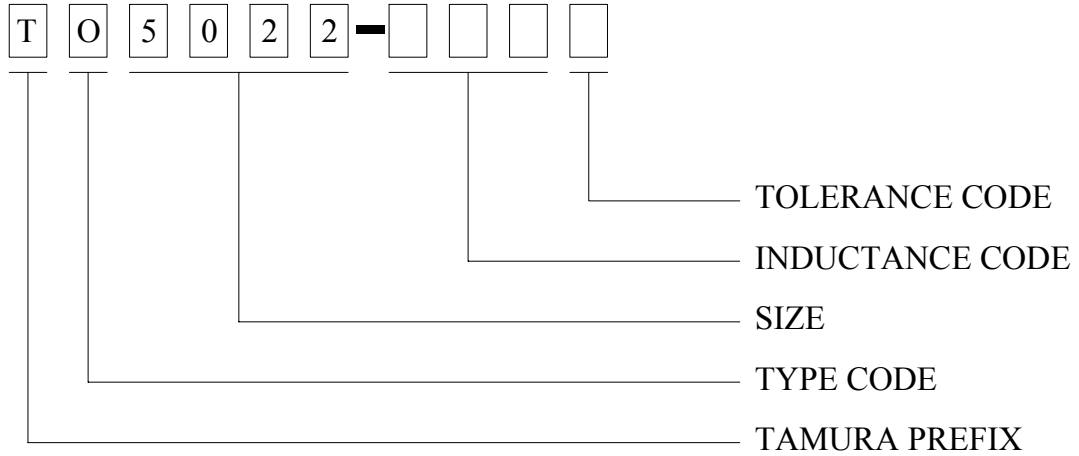
3. Q'TY & G.W. PER PACKAGE :

SERIES	INNER : REEL			OUTER : CARTON		
	Q'TY (PCS)	G.W. (gw)	STYLE	Q'TY (PCS)	G.W. (kg)	SIZE (cm)
TO5022	250	1250	13 - 32	1000	6.1	40 x 20 x 26

PRODUCT SPECIFICATION

Product Name	5022 SMD POWER INDUCTORS - OPEN TYPE	Page	4
TAMURA Part No.	TO5022-XXX	Rev. No.	0

6. Part No. FORMAT :



PRODUCT SPECIFICATION

Product Name	5022 SMD POWER INDUCTORS - OPEN TYPE	Page	5
TAMURA Part No.	TO5022-XXX	Rev. No.	0

7. RELIABILITY TEST :

TEST ITEM	SPECIFICATION	TEST CONDITION
SOLDERABILITY	MORE THAN 90% OF THE TERMINAL ELECTRODE SHALL BE COVERED WITH FRESH SOLDER.	PREHEAT : 125±25°C FOR 60 SECONDS SOLDER : H63A (EUTECTIC SOLDER) SOLDER TEMP. : 230±5°C FLUX : ROSIN DIP TIME : 4±1 SECONDS
THERMAL SHOCK TEST (TEMP. CYCLE)	INDUCTANCE SHALL NOT CHANGE MORE THAN ±20%	ROOM TEMP. —————> <u>-25±2°C</u> 15 MINUTES 30 MINUTES ROOM TEMP. —————> <u>85±2°C</u> 15 MINUTES 30 MINUTES TOTAL : 50 CYCLES
HUMIDITY RESISTANCE TEST		TEMPERATURE : 40±2°C HUMIDITY : 90 ~ 95% APPLIED CURRENT : PER SPEC. TIME : 500 HOURS
HIGH TEMP. RESISTANCE TEST		TEMPERATURE : 85±2°C APPLIED CURRENT : PER SPEC. TIME : 500 HOURS