

Header - PC 6-16/ 3-G1FU-10,16 - 1996320

Please be informed that the data shown in this PDF Document is generated from our Online Catalog. Please find the complete data in the user's documentation. Our General Terms of Use for Downloads are valid (<http://phoenixcontact.com/download>)

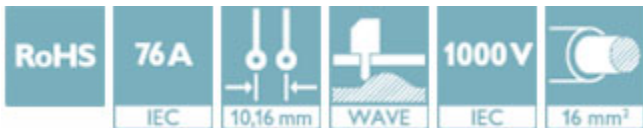
Header, nominal current: 76 A, rated voltage (III/2): 1000 V, number of positions: 3, pitch: 10.16 mm, color: green, contact surface: Silver, mounting: Wave soldering



The figure shows a 5-pos. version of the product

Why buy this product

- Well-known mounting principle allows worldwide use
- Screwable flange for superior mechanical stability
- Maximum flexibility when it comes to device design – one header for connectors with different connection technologies



Key Commercial Data

Packing unit	1 STK
Minimum order quantity	50 STK
GTIN	
GTIN	4046356038065
Weight per Piece (excluding packing)	18.440 g
Custom tariff number	85366930
Country of origin	Poland

Technical data

Dimensions

Length [l]	34 mm
Pitch	10.16 mm
Dimension a	20.32 mm
Width [w]	48.24 mm

Header - PC 6-16/ 3-G1FU-10,16 - 1996320

Technical data

Dimensions

Constructional height	13.4 mm
Height [h]	17.4 mm
Length of the solder pin	4 mm
Pin dimensions	0.8 x 1.2 mm
Pin spacing	1.16 mm
Hole diameter	1.7 mm

General

Range of articles	PC 6-16/..-G1FU
Insulating material group	I
Rated surge voltage (III/3)	6 kV
Rated surge voltage (III/2)	8 kV
Rated surge voltage (II/2)	8 kV
Rated voltage (III/3)	630 V
Rated voltage (III/2)	1000 V
Rated voltage (II/2)	1000 V
Connection in acc. with standard	EN-VDE
Nominal current I_N	76 A (41 A in combination with PC 6 plug)
Insulating material	PA
Flammability rating according to UL 94	V0
Color	green
Number of positions	3

Standards and Regulations

Connection in acc. with standard	EN-VDE
	CUL
Flammability rating according to UL 94	V0

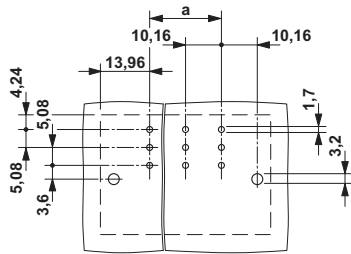
Environmental Product Compliance

China RoHS	Environmentally friendly use period: unlimited = EFUP-e
	No hazardous substances above threshold values

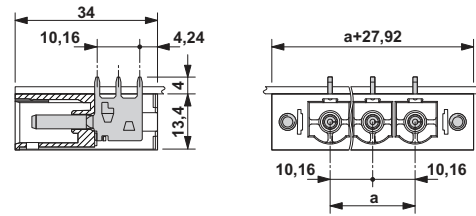
Drawings

Header - PC 6-16/ 3-G1FU-10,16 - 1996320

Drilling diagram



Dimensional drawing



Classifications

eCl@ss

eCl@ss 4.0	272607xx
eCl@ss 4.1	27260701
eCl@ss 5.0	27260701
eCl@ss 5.1	27260701
eCl@ss 6.0	27260704
eCl@ss 7.0	27440402
eCl@ss 8.0	27440402
eCl@ss 9.0	27440402

ETIM

ETIM 3.0	EC001121
ETIM 4.0	EC002637
ETIM 5.0	EC002637
ETIM 6.0	EC002637

UNSPSC

UNSPSC 6.01	30211810
UNSPSC 7.0901	39121409
UNSPSC 11	39121409
UNSPSC 12.01	39121409
UNSPSC 13.2	39121409

Approvals

Approvals

Approvals


SEV / IECCEB CB Scheme / EAC / cULus Recognized


Header - PC 6-16/ 3-G1FU-10,16 - 1996320

Approvals


Ex Approvals

Approval details

SEV		https://www.electrosuisse.ch/en/meta/shop/product-certificates.html	IK-3431
Nominal current IN	76 A		
Nominal voltage UN	1000 V		

IECEE CB Scheme		http://www.iecee.org/	CH-8077
Nominal current IN	76 A		
Nominal voltage UN	1000 V		

EAC			B.01742
-----	---	--	---------

cULus Recognized		http://database.ul.com/cgi-bin/XYV/template/LISEXT/1FRAME/index.htm	E60425-20040202
	B	C	D
Nominal current IN	66 A	66 A	5 A
Nominal voltage UN	300 V	300 V	600 V

Accessories

Accessories

Coding element

Header - PC 6-16/ 3-G1FU-10,16 - 1996320

Accessories

Coding profile - CP-PC RD - 1701967



Coding profile, for plugging into the coding ribs of the plug at a later date, insulating material, color: Red

Mounting material

Accessories - DFK-PC 16-SS - 1705449



Screw set for DFK-PC 16... connectors

Additional products

Printed-circuit board connector - PC 6/ 3-STF-10,16 - 1913581



Plug component, nominal current: 41 A, rated voltage (III/2): 1000 V, number of positions: 3, pitch: 10.16 mm, connection method: Screw connection with tension sleeve, color: green, contact surface: Silver

Printed-circuit board connector - PC 6/ 3-STF-SH-10,16 - 1973042



Plug component, nominal current: 41 A, rated voltage (III/2): 1000 V, number of positions: 3, pitch: 10.16 mm, connection method: Screw connection with tension sleeve, color: green, contact surface: Silver

Printed-circuit board connector - PC 16/ 3-STF-10,16 - 1967469



Plug component, nominal current: 76 A, rated voltage (III/2): 1000 V, number of positions: 3, pitch: 10.16 mm, connection method: Screw connection with tension sleeve, color: green, contact surface: Silver

Header - PC 6-16/ 3-G1FU-10,16 - 1996320

Accessories

Printed-circuit board connector - PC 16/ 3-STF-SH-10,16 - 1737530



Plug component, nominal current: 76 A, rated voltage (III/2): 1000 V, number of positions: 3, pitch: 10.16 mm, connection method: Screw connection with tension sleeve, color: green, contact surface: Silver

Printed-circuit board connector - TPC 16/ 3-STF-10,16 - 1715264



Plug component, nominal current: 76 A, rated voltage (III/2): 1000 V, number of positions: 3, pitch: 10.16 mm, connection method: Screw connection with tension sleeve, color: green, contact surface: Silver

Printed-circuit board connector - SPC 16/ 3-STF-10,16 - 1711381



Plug component, nominal current: 76 A, rated voltage (III/2): 1000 V, number of positions: 3, pitch: 10.16 mm, connection method: Push-in spring connection, color: green, contact surface: Silver
