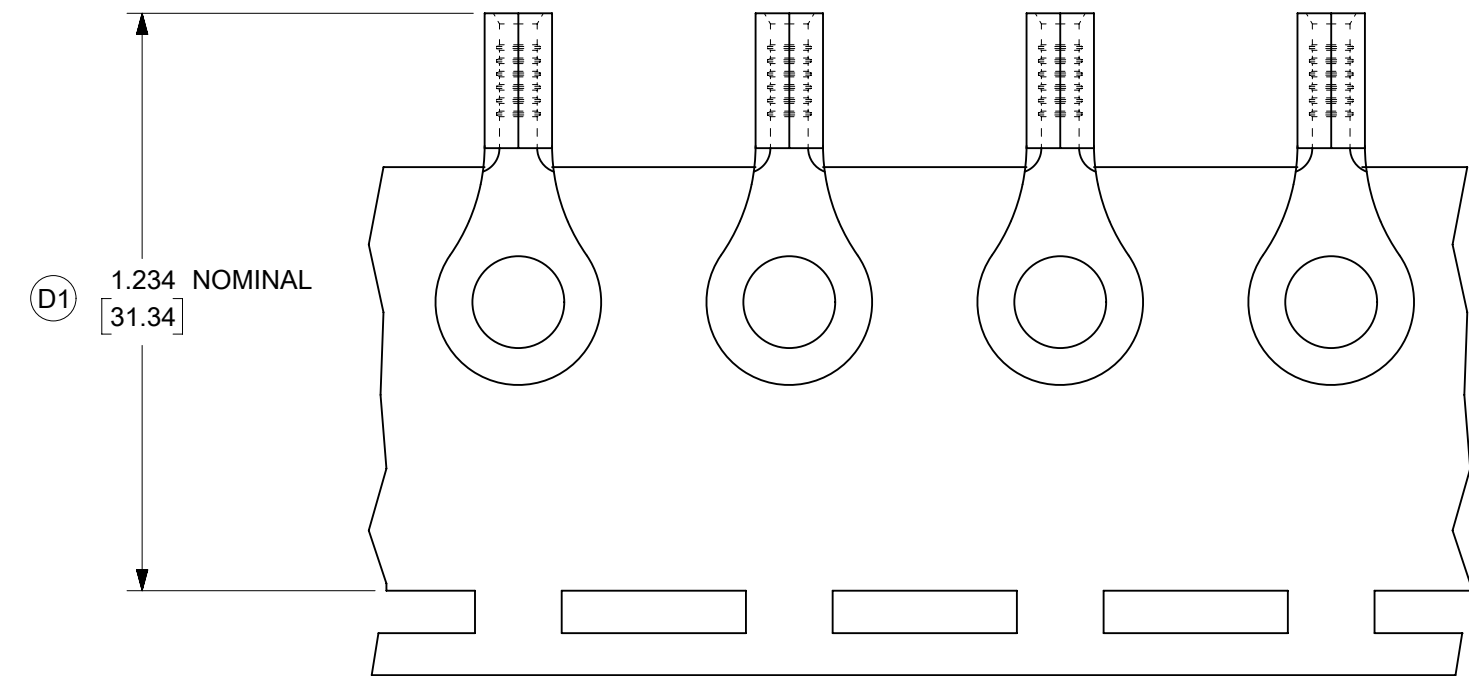
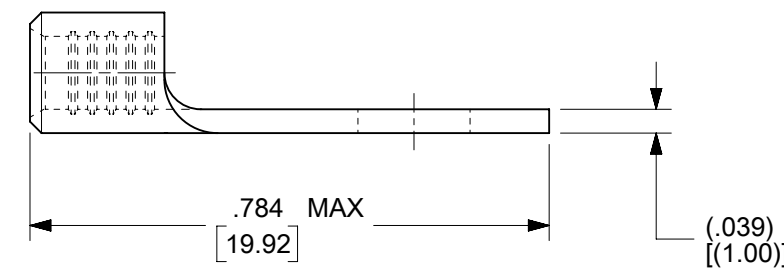
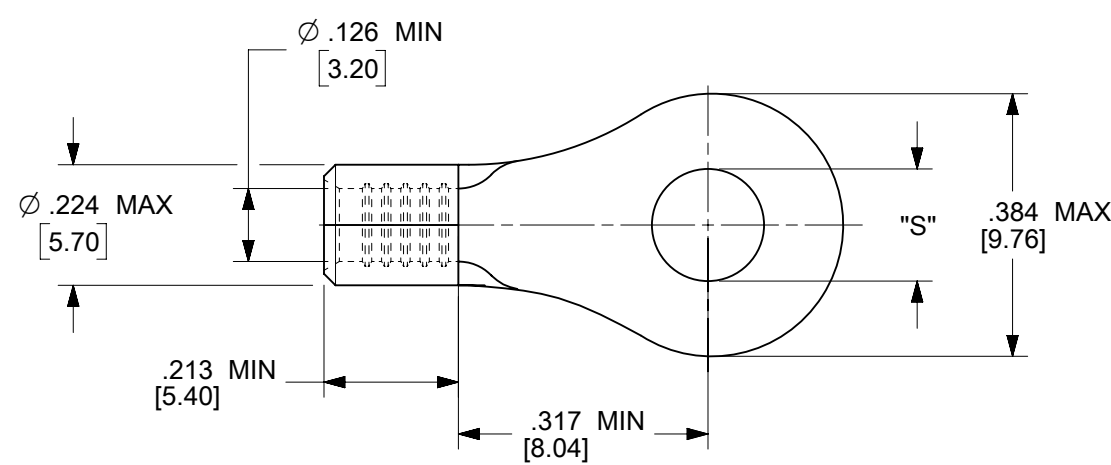


MATERIAL NO.	ENG. NO.	STUD SIZE	"S" MAX	DESCRIPTION
192030389	19203-0389	10	.212/5.38	LOOSE
192030094	C-S-128-10T	10	.212/5.38	TAPE



PARTS ON TAPE

NOTES:

1. MATERIAL: STEEL
2. WIRE SIZE: 12-10 AWG (4.0-6.0 MM<sup>2</sup>)
3. FINISH: NICKEL PLATED WITH OPTIONAL COPPER FLASH UNDERPLATING, IS ALLOWED FOR IMPROVED ADHESION.
4. PART IS ROHS COMPLIANT.
5. AMBIENT OPERATING TEMPERATURE UP TO 900 °F (483 °C).

THIS DRAWING CONTAINS INFORMATION THAT IS PROPRIETARY TO MOLEX ELECTRONIC TECHNOLOGIES, LLC AND SHOULD NOT BE USED WITHOUT WRITTEN PERMISSION									
FUNCTIONAL SYMBOLS	DIMENSION UNITS	SCALE	CURRENT REV DESC: REMASTERED IN ECTR AND UPDATED NOTE						
	IN/MM	4:1	<p><b>molex</b></p> <p>RING TONGUE TERMINAL, 12-10 AWG, KRIMPTITE, 900 DEG F (483 DEG C)</p> <p>PRODUCT CUSTOMER DRAWING</p> <p>DOCUMENT NUMBER: SD-19203-018   DOC TYPE: PSD   DOC PART: 001   REVISION: D1</p> <p>EC NO: 708789   DRWN: PAWANC   2022/05/12          CHKD: DMYRICK   2022/06/01          APPR: JMACNEIL   2022/06/02</p> <p>INITIAL REVISION:          DRWN: DMYRICK   2005/04/06          APPR: RDEROSS   2005/04/06</p> <p>DRAFT WHERE APPLICABLE MUST REMAIN WITHIN DIMENSIONS</p>						
GENERAL TOLERANCES (UNLESS SPECIFIED)									
	MM	INCH							
	4 PLACES	±							
	3 PLACES	±							
DIVISIONAL SYMBOLS	2 PLACES	±							
	1 PLACE	±							
	0 PLACES	±							
	ANGULAR TOL	± °							
THIRD ANGLE PROJECTION		DRAWING	SERIES	MATERIAL NUMBER	CUSTOMER	SHEET NUMBER			
		B-SIZE	19203	SEE CHART	GENERAL MARKET	1 OF 1			

DOCUMENT STATUS	P1	RELEASE DATE	2022/06/02	15:20:35
-----------------	----	--------------	------------	----------