

- 1
- 2
- 3
- 4
- 5
- 6
- 7
- 8
- 9**
- 10
- 11
- 12
- 13
- 14
- 15
- 16
- 17
- 18

**MATERIAL**

AISI 303 stainless steel.

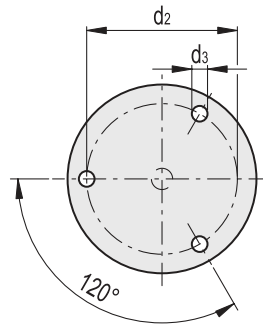
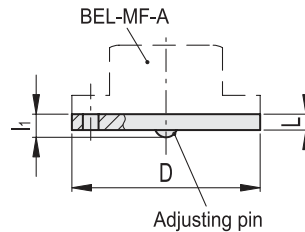
**FEATURES AND APPLICATIONS**

BEL-AP adjusting plates are used in combination with BEL-MF-A bull's eye levels.

The alignment of the bull's eye level with respect to the reference surface is reached when the fixing holes are positioned at 120°.

The adjusting pin allows the adjustment of the bubble acting as a pivot point.

By acting on the tightening of the screws, it will be possible to get the desired adjustment with respect to the mounting surface until obtaining a perfect positioning of the bubble in the circular marking of the window.



Conversion Table	
1 mm = 0.039 inch	
D	
mm	inch
20	0.79
25	0.98
30	1.18
40	1.57
50	1.97

Code	Description	D	d2	d3	L	l1	⚖
156551	BEL-AP-SST-20	20	17	1.8	1.2	3.2	3
156553	BEL-AP-SST-25	25	21	2.2	1.2	3.2	5
156555	BEL-AP-SST-30	30	24	3.2	1.2	3.2	7
156557	BEL-AP-SST-40	40	34.5	3.2	1.2	3.2	12
156559	BEL-AP-SST-50	50	43	3.2	1.2	3.2	19