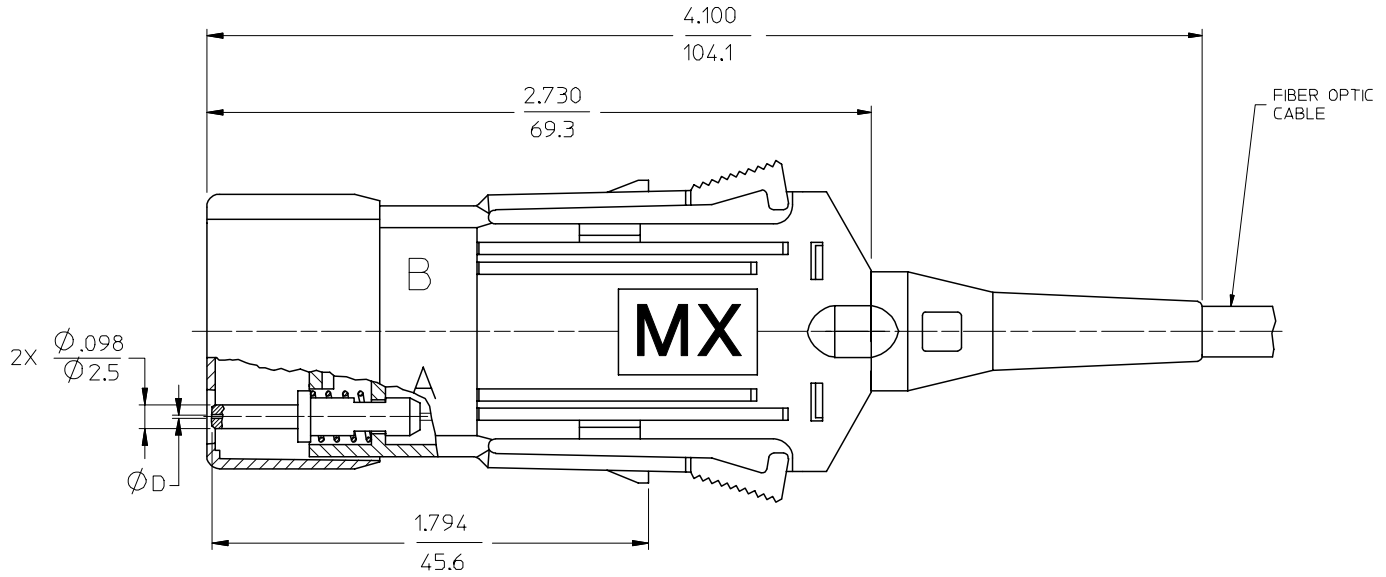
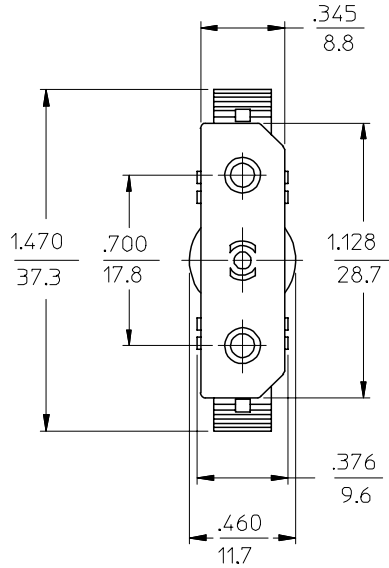


P/N of CONNECTOR	∅D (μm)	MATERIAL of FERRULE	TYPE of CABLE
106040-0000	127	Zr PLUS	∅4.2 mm
106040-0100			∅4.8 mm
106040-0200			ZIPCORD
106040-3000	128	Zr	∅4.2 mm
106040-3100			∅4.8 mm
106040-3200			ZIPCORD



ENTER DESCRIPTION EC NO: MF2006-0283 DRWN:PGIBLIN 2005/11/28 CHKD: 2005/11/28 APPR:IGUMIN 2005/11/28	QUALITY SYMBOLS ▽=0 ▽=0	GENERAL TOLERANCES (UNLESS SPECIFIED)		DIMENSION STYLE	SCALE	DESIGN UNITS	THIRD ANGLE PROJECTION	
		mm	INCH	IN/MM	2:1	INCH		
		4 PLACES ±---	±---	PGIBLIN	DATE	TITLE		
		3 PLACES ±---	±---	CHECKED BY	DATE	ESCON CONNECTOR		
2 PLACES ±---	±---	APPROVED BY	DATE	MOLEX INCORPORATED				
1 PLACE ±---	±---	ANGULAR ±1/2°		MATERIAL NO.	DOCUMENT NO.	SHEET NO.		
DRAFT WHERE APPLICABLE MUST REMAIN WITHIN DIMENSIONS		SEE TABLE		SD-106040-XX00		1 OF 01		
				SIZE	THIS DRAWING CONTAINS INFORMATION THAT IS PROPRIETARY TO MOLEX INCORPORATED AND SHOULD NOT BE USED WITHOUT WRITTEN PERMISSION			