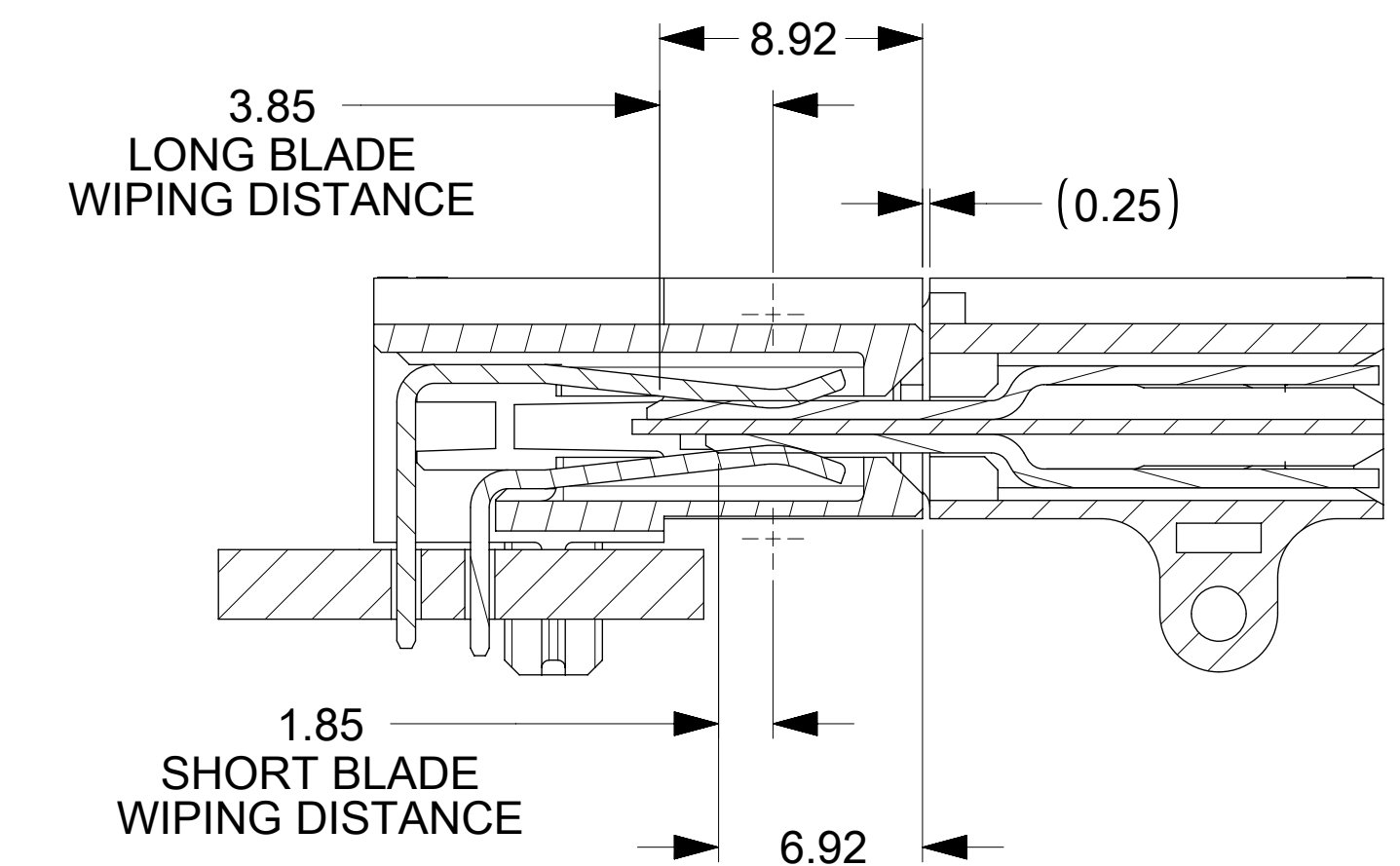
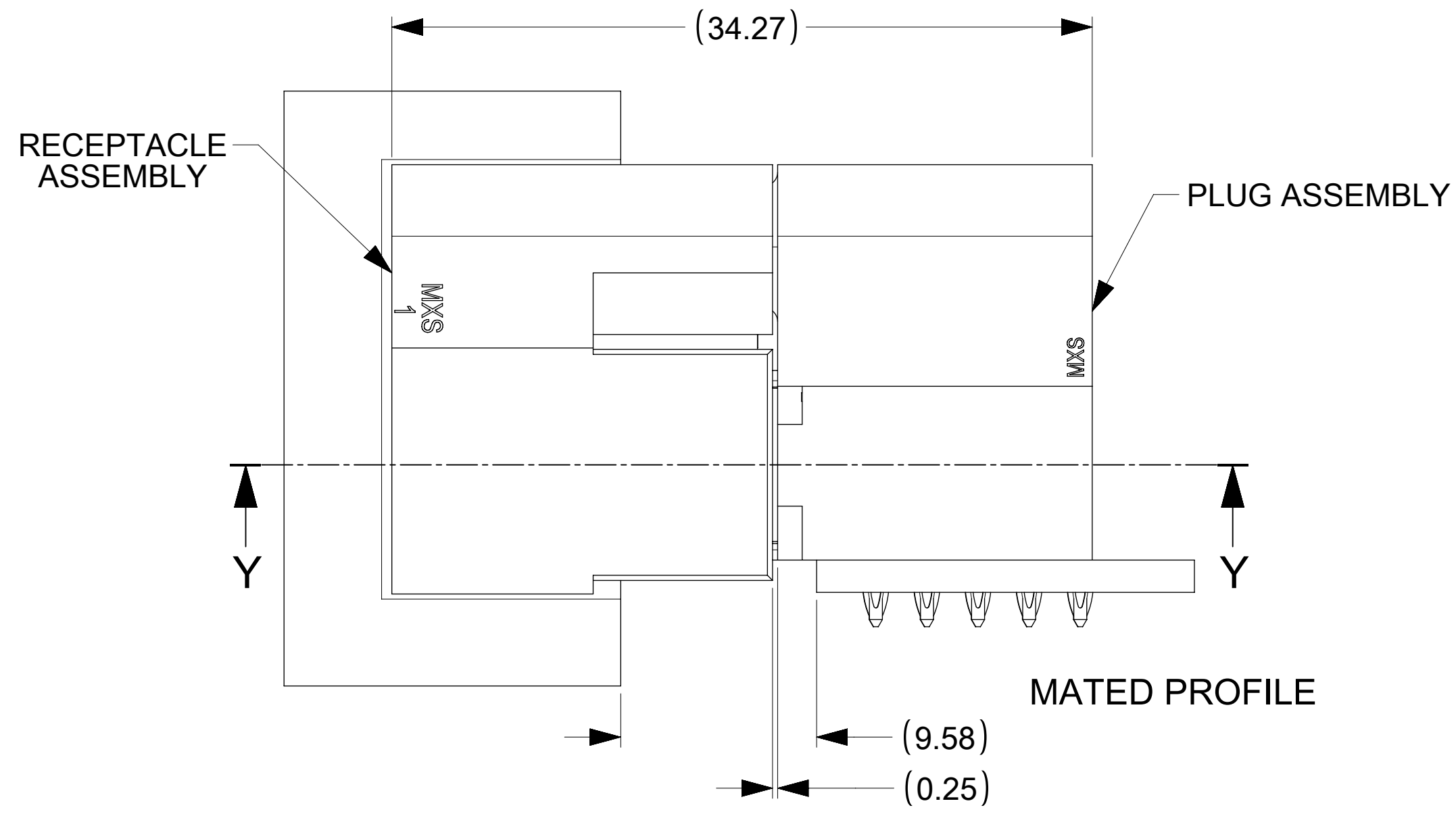
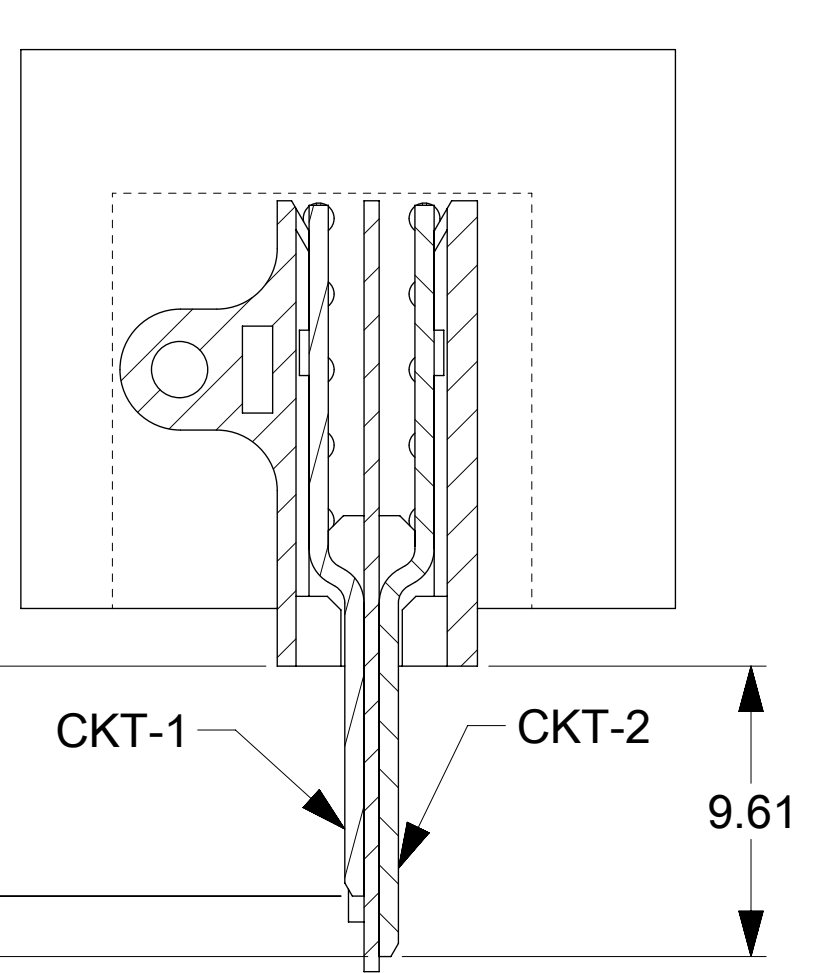
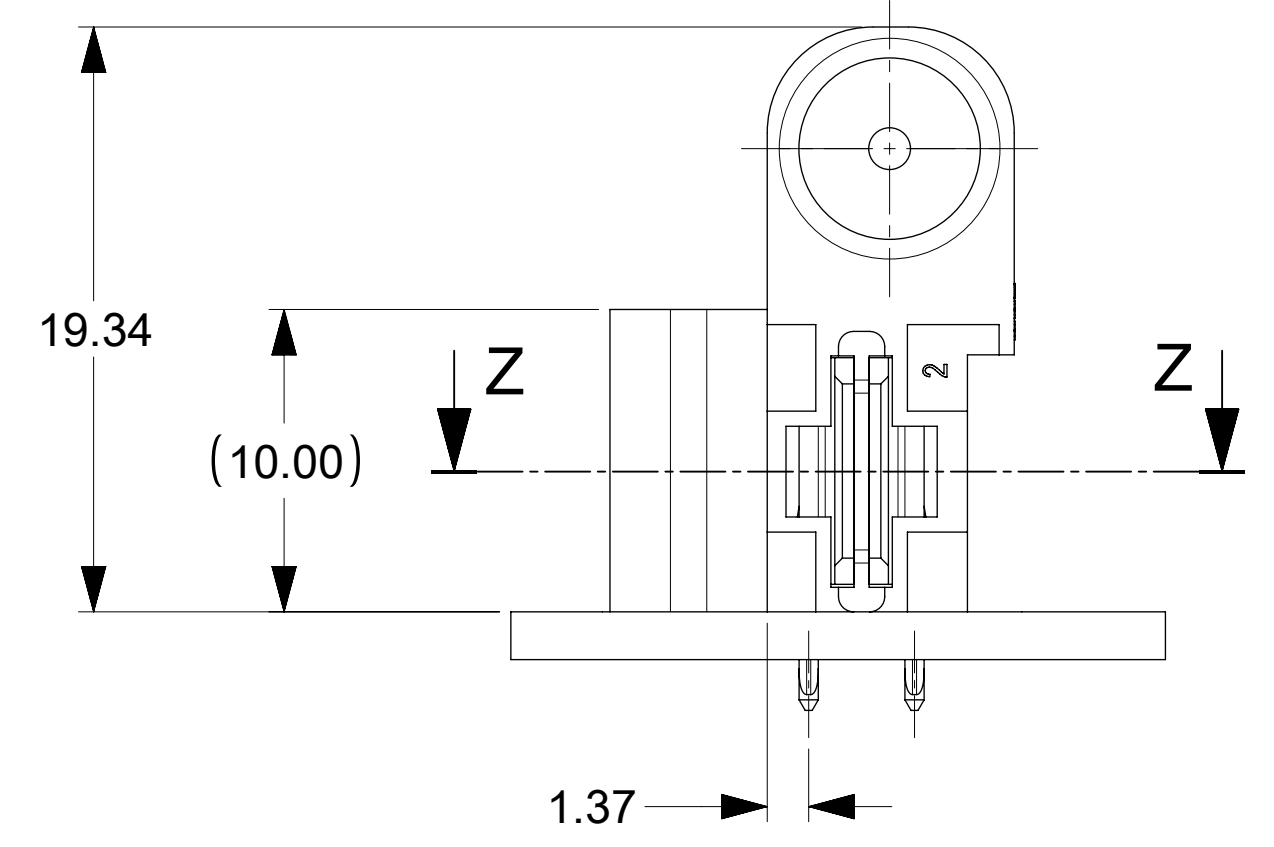


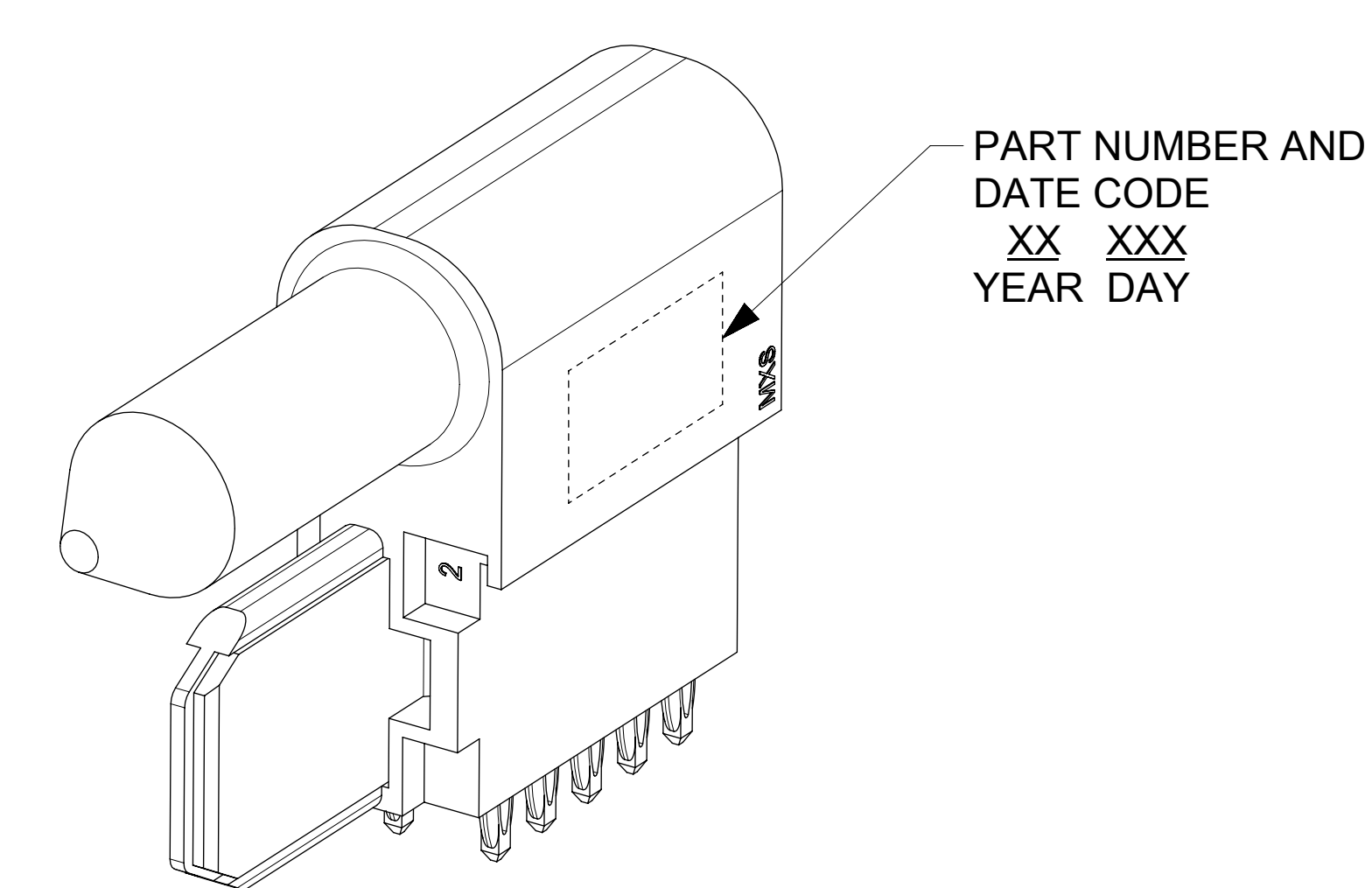
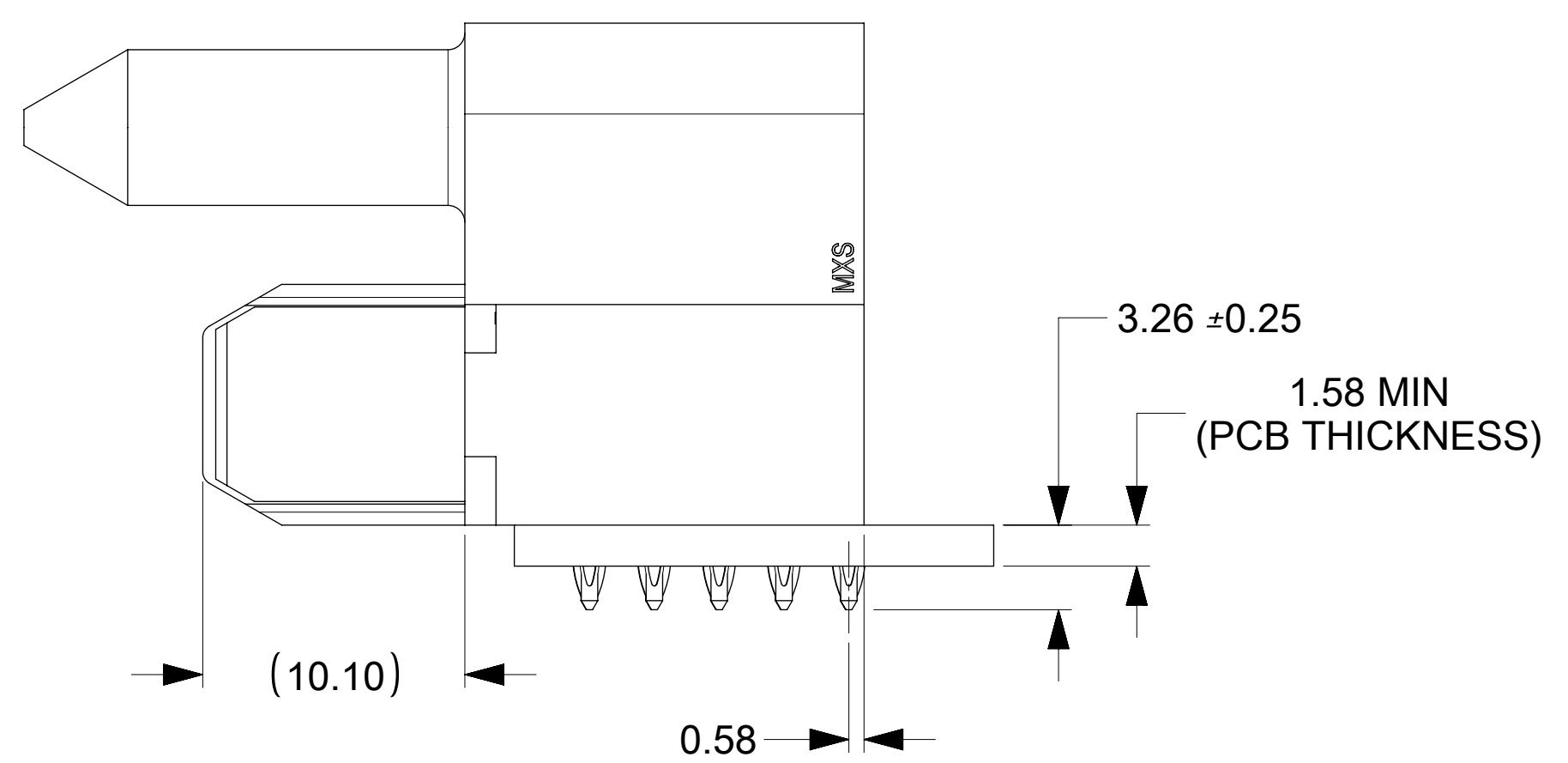
RECOMMENDED PCB LAYOUT AND KEEP-OUT ZONE



SECTION Y-Y



SECTION Z-Z



P/N: 172045-1001

NOTES:

1. MATERIAL:
 - HOUSINGS: LCP UL94, V-0, COLOR : BLACK
 - TERMINALS: HIGH CONDUCTIVITY COPPER ALLOY
 - PLATING: 1.27 MICROMETER MIN. (50 MICROINCH) NICKEL OVERALL WITH 2.54 MICROMETER MIN. (100 MICROINCH) SELECTIVE TIN ON TAILS AND 0.762 MICROMETER MIN. (30 MICROINCH) SELECTIVE GOLD ON CONTACT AREA
2. PACKAGING: ASSEMBLIES TO BE TRAY PACKED PER PACKAGING SPEC: PK-172045-1001
3. PLATED THRU HOLE SIZE, REFER TO PS-46436-100 FOR DETAILS
4. PRODUCT SPEC: PS-172047-1001
5. APPLICATION SPEC: AS-46436-100
6. PRODUCT TO MEET RoHS REQUIREMENTS
7. ASSEMBLY MATES TO MOLEX RECEPTACLE ASSEMBLY SERIES 172047.
8. TAIL DESIGN: COMPLIANT PIN.
9. SCREW NOT SUPPLIED BY MOLEX. USE #2-32 X .375 TYPE AB SELF TAPPING SCREW. RECOMMENDED SCREW LENGTH CAN BE USED WITH UP TO A 4.4mm MAX BOARD THICKNESS.
10. POWER CIRCUITS ARE LUBRICATED

THIS DRAWING CONTAINS INFORMATION THAT IS PROPRIETARY TO MOLEX ELECTRONIC TECHNOLOGIES, LLC AND SHOULD NOT BE USED WITHOUT WRITTEN PERMISSION									
DIMENSION UNITS	SCALE	CURRENT REV DESC: UPDATED TO MATE SERIES							
mm	4:1								
GENERAL TOLERANCES (UNLESS SPECIFIED)									
ANGULAR TOL	± 0.5°								
4 PLACES	±	EC NO: 640097							
3 PLACES	±	DRWN: MUM	2018/08/20						
2 PLACES	± 0.25	CHK'D: HTHYAGARAJ	2020/06/26						
1 PLACE	± 0.25	APPR: HTHYAGARAJ	2020/06/26						
0 PLACES	±	INITIAL REVISION:							
DRAFT WHERE APPLICABLE MUST REMAIN WITHIN DIMENSIONS		DRWN: EANG	2013/10/07						
		APPR: KHLIM	2013/10/22						
THIRD ANGLE PROJECTION		DRAWING	SERIES	MATERIAL NUMBER	CUSTOMER	SHEET NUMBER			
D-SIZE		172045	1720451001	GENERAL MARKET	1 OF 1				