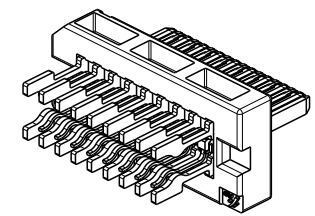
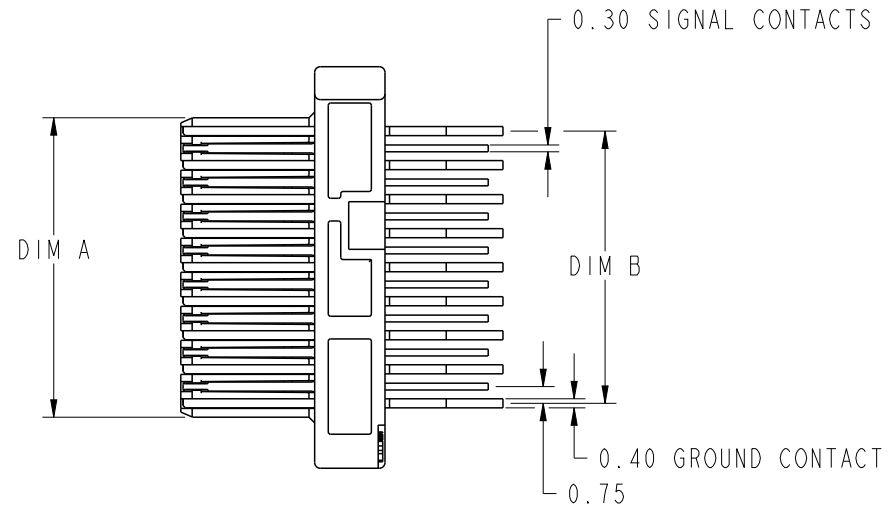
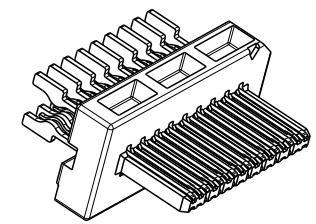


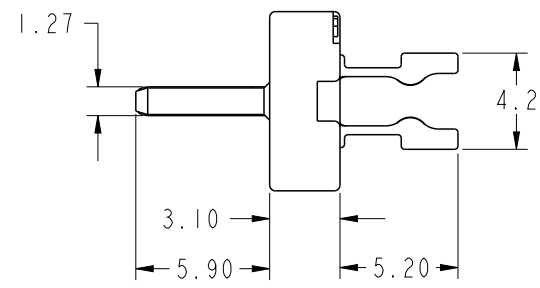
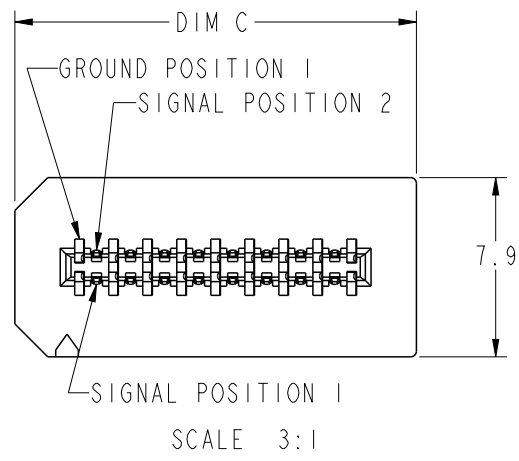
PRODUCT NUMBER	DIM A	DIM B	DIM C
58443-001 58443-001LF	13.2	12.0	17.7



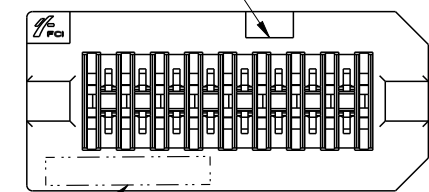
SCALE 2:1



SCALE 2:1



POLARIZING FEATURE



DATE CODE PRINTED IN THIS AREA

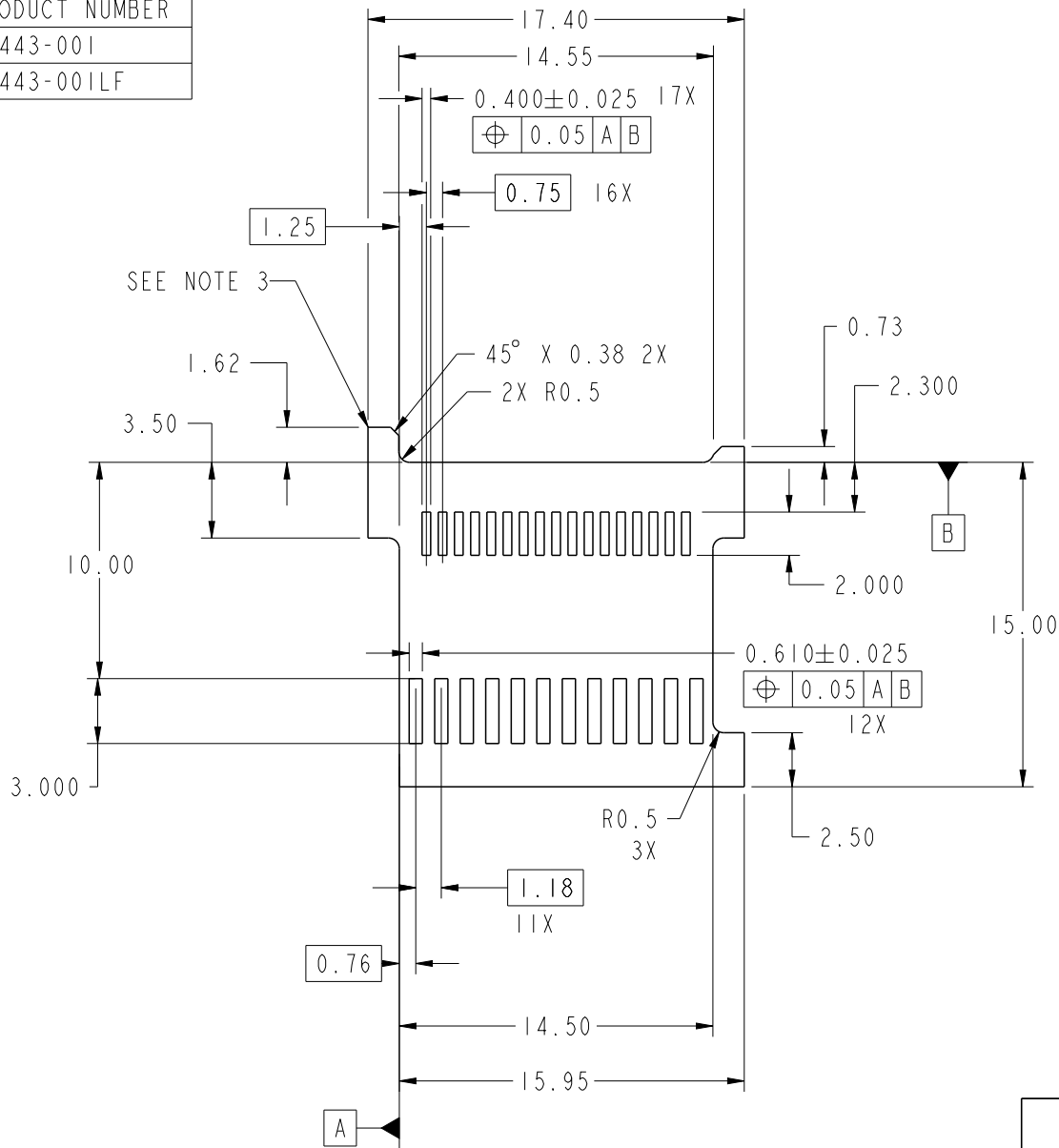


Copyright FCI.

www.fciconnect.com		surface 3.2 ASME Y14.5	tolerance std ASME Y14.5	projection MM
		TOLERANCES UNLESS OTHERWISE SPECIFIED		size A4
Dr	G. PETERS	2003/04/01	ANGULAR	Scale 2:1
Eng	D. BRANN	2003/04/01	LINEAR	
Chr	HIRAN V N	2006/07/26	0° ±2°	ECN 109-0055
Appr	HIRAN V N	2006/07/26	Product family EyeMax (TM) Spec ref	
FCI		title EYEMAX PLUG <sup>®</sup> ASSEMBLY		dwg no 58443
		catalog no -		Rev. J
		CUSTOMER		sheet 1 of 3

rev	ecn no	dr	date
J	109-0055	RPK	2009/04/09
D	v04-0016	DAI	2004-02-09
E	v04-0484	DAI	2004-06-08
F	v05-0064	TAB	2005-03-03
G	v05-0528	DAI	2005-06-30
H	106-0123	HVN	2006/07/26

PRODUCT NUMBER  
58443-001  
58443-001LF



PCB NOTES:

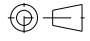
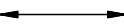

1. PADS ON BOTH SIDES OF PCB.
2. DIMENSIONS APPLY TO BOTH SIDES OF THE PCB LOCATED FROM DATUMS A & B.
- ③ EXTENSIONS SHOULD NOT BE USED TO LOCATE SOLDER TAILS TO SOLDER PADS ONLY AS AID IN ASSEMBLY BY LIMITING TOP TO BOTTOM MOVEMENT OF THE PCB.
4. PCB THICKNESS: 1.57mm (.062").

**RECOMMENDED 4X PCB LAYOUT**  
SCALE 3:1

www.fciconnect.com		surface 3.2 ASME Y14.5	tolerance std ASME Y14.5	projection ASME Y14.5	MM
		TOLERANCES UNLESS OTHERWISE SPECIFIED			
Dr	G.PETERS	2003/04/01	ANGULAR	0.X ±.30	size A4
Eng	D.BRANN	2003/04/01	LINEAR	0.XX ±.10	Scale 2:1
Chr	HIRAN V N	2006/07/26	0° ±2°	0.XXX ±.050	ECN 109-0055
Appr	HIRAN V N	2006/07/26	Product family EyeMax (TM)		Spec ref
		title EYEMAX PLUG <sup>®</sup> ASSEMBLY		dwg no 58443	Rev. J
		catalog no	CUSTOMER		sheet 2 of 3

CONNECTOR NOTES:

1. MATERIAL: HOUSING, HIGH TEMPERATURE THERMOPLASTIC, UL 94V-0 RATED, SUITABLE FOR REFLOW SOLDERING. CONTACTS: COPPER ALLOY.
2. PLATING: GOLD OVER NICKEL IN CONTACT AREA AND TIN-LEAD ON SOLDER TAILS UNLESS PART NUMBER ENDS IN LF LEAD FREE SOLDER TAIL PLATING 2 $\mu$ m (80 $\mu$ " ) MIN MATTE TIN OVER 1.27 $\mu$ m (50 $\mu$ " ) MIN NICKEL UNDERPLATE
3. PRODUCT SPECIFICATION GS-12-209.
4. PACKAGING SPECIFICATION GS-14-794. PACKAGING OF LEAD FREE PRODUCTS MEETS LABELING AND PACKAGING SPECIFICATION GS-14-920.
5. APPLICATION SPECIFICATION GS-20-026 FOR PADDLE CARD AND CABLE TERMINATION DETAIL.
6. MATES WITH LATCH-STYLE RECEPTACLE 58368, 58369 (4X), OR THUMBSCREW STYLE 10009629 (4X).
7. PLUG ALSO AVAILABLE WITH PCB ATTACHED. WITH UNEQUALIZED PCB 58638 OR EQUALIZED 4X 10026692 .
8. PLUG CAN BE PURCHASED AS PART OF A KIT THAT INCLUDES THE BACKSHELLS AND CABLE COLLARS. FOR 4X, 58441 FOR LATCH-STYLE PLUG KITS OR 10013923 FOR THUMBSCREW PLUG KITS.
9. IF LEAD FREE PART NUMBER, THE HOUSING WILL WITHSTAND EXPOSURE TO 260°C PEAK TEMPERATURE FOR 10 SECONDS IN A WAVE SOLDER APPLICATION WITH A 1.60mm MIN THICK CIRCUIT BOARD.
10. LEAD FREE PRODUCTS MEET EUROPEAN UNION DIRECTIVES AND OTHER COUNTRY REGULATIONS AS DESCRIBED IN GS-22-008.

www.fciconnect.com			surface 3.2 ASME Y14.5 $\checkmark$		tolerance std ASME Y14.5 -		projection 		MM 		
TOLERANCES UNLESS OTHERWISE SPECIFIED											
Dr	G.PETERS	2003/04/01	ANGULAR	LINEAR	0.X	±.30	size	A4	Scale		
Eng	D.BRANN	2003/04/01			0.XX	±.10			2:1		
Chr	HIRAN V N	2006/07/26	0°	±2°	0.XXX	±.050	ECN	109-0055			
Appr	HIRAN V N	2006/07/26	Product family EyeMax (TM)				Spec ref				
			title EYEMAX PLUG <sup>®</sup> ASSEMBLY				dwg no		58443		Rev.
			catalog no				-		CUSTOMER		sheet 3 of 3

