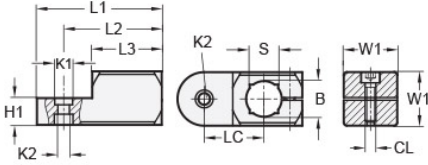




MT12-CCSWV-20-A

Ruland Swivel Clamp Joint, Swivel Thru Hole 5.5mm, Clamp Width 20mm, Thru Hole 12mm, Clamp Screw M5, L 50mm, Aluminum




Description

Ruland MT12-CCSWV-20-A is a swivel clamp joint with a thru hole for 12mm round or 10mm square tube, M5 clamp screw, 10mm base height, 20mm width and height, and 50mm overall length. It is designed to fit with MT10:12 swivel clamp bases, MT12 clamp connectors and mounting blocks, and MT12 round and square tubes. When combined with a swivel bases or attachment clamp joints, it is an ideal articulating mounting solution for screens, sensors, reflectors, plexiglass machine guards, and other components that require frequent adjustments. The vertical bore is parallel to the swivel axis. An MT10:12-SWALK-M5-20 adjustable clamping handle can be used to join it to other Ruland swivel components or tubes for rapid repositioning without the use of tools. This part is aluminum with a matte tumbled finish for use in most industrial environments. MT12-CCSWV-20-A is manufactured by Otto Ganter, inventoried by Ruland, and RoHS3 compliant.

Product Specifications

| | | | |
|---|--------------|----------------------------------|-----------------------|
| Thru Hole Diameter B | 12 mm | Thru Hole Tolerance | +0.11/-0 mm |
| Square Thru Hole S | 10 mm | Counterbore 1 Diameter K1 | 8.5 mm |
| Counterbore 2 Diameter K2 | 5.5 mm | Clamp Screw CL | M5 |
| Overall Length L1 | 50 mm | Hub Length LH | 29 mm |
| Edge To Center Of Counterbore L2 | 40 mm | Center To Center LC | 23 mm |
| Width & Height W1 | 20 mm | Base Height H1 | 10 mm |
| Material Specification | Aluminum | Manufacturer | JW Winco/ Otto Ganter |
| Country of Origin | Germany | Weight (lbs) | 0.072800 |
| UPC | 634529230411 | Tariff Code | 7609.00.0000 |
| UNSPC | 31162908 | | |

Note 1 Performance ratings are for guidance only. The user must determine suitability for a particular application.

Prop 65  **WARNING** This product can expose you to the chemical Nickel (metallic), known to the State of California to cause cancer. For more information go to www.P65Warnings.ca.gov.