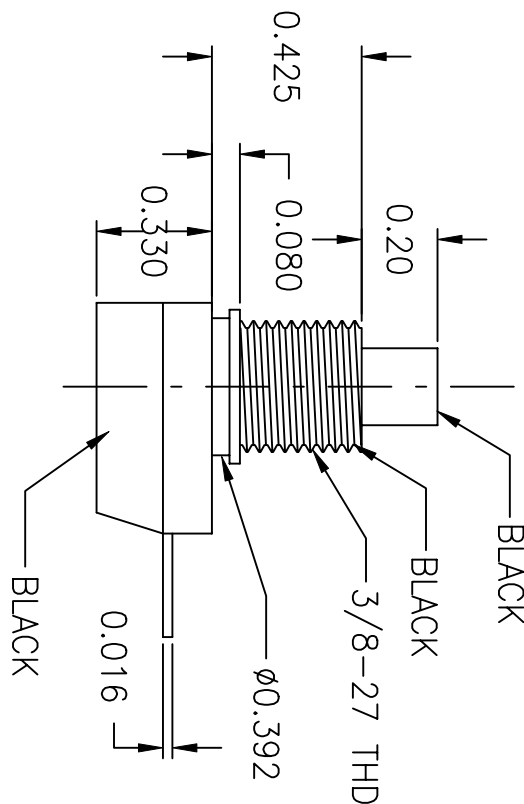
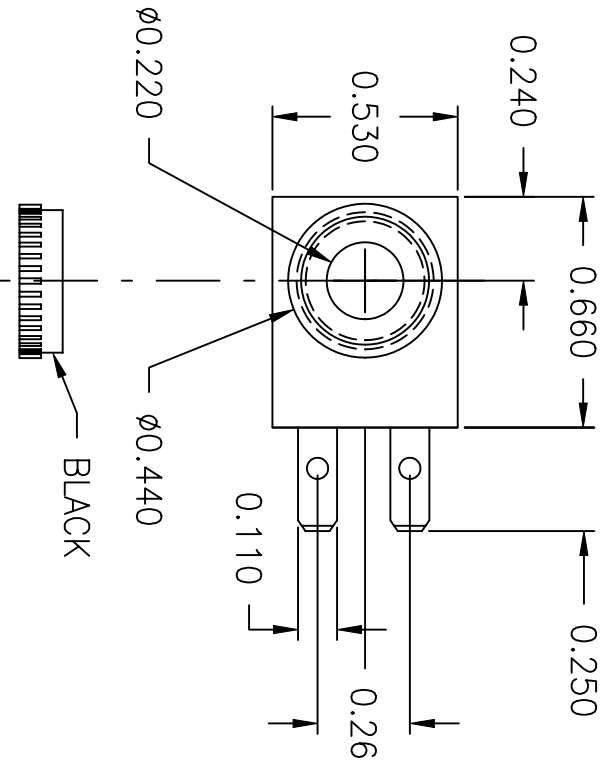


LTR	EN	DESCRIPTION	APPR	BY	DATE
A	-	INITIAL RELEASE	RB	NH	9-15-06
A1	-	ADDED CUSTOMER'S PART NUMBER.	RB	DC	1-16-07



JUDCO INVENTORY NO. 40-4523-00
 SWITCH TYPE: PUSH ON-PUSH OFF, SPST
 ELECTRICAL RATINGS: 14VDC 10A
 TEMPERATURE RATING: 55°C
 NUT PACKED SEPARATELY

CUSTOMER: DIGIKEY
 CUSTOMER PN: 547PB-ND
 APPROVED BY: _____
 DATE: _____

DIMENSIONS IN INCHES DIMENSIONS ARE REFERENCE		
DRAWN: NH	9-15-06	
APPR: KJ	1-16-07	OUTLINE J-188A-1 UJDC W/STRAIGHT TERMINALS DWG. NO. 1415-1026 SHEET 1 OF 1

This document embodies a product, component, and/or design proprietary to JUDCO MANUFACTURING INC., and which is protected either as a trade secret, by U.S. Patent, or by copyright. It may not be used in any way without written express consent of JUDCO MANUFACTURING INC.