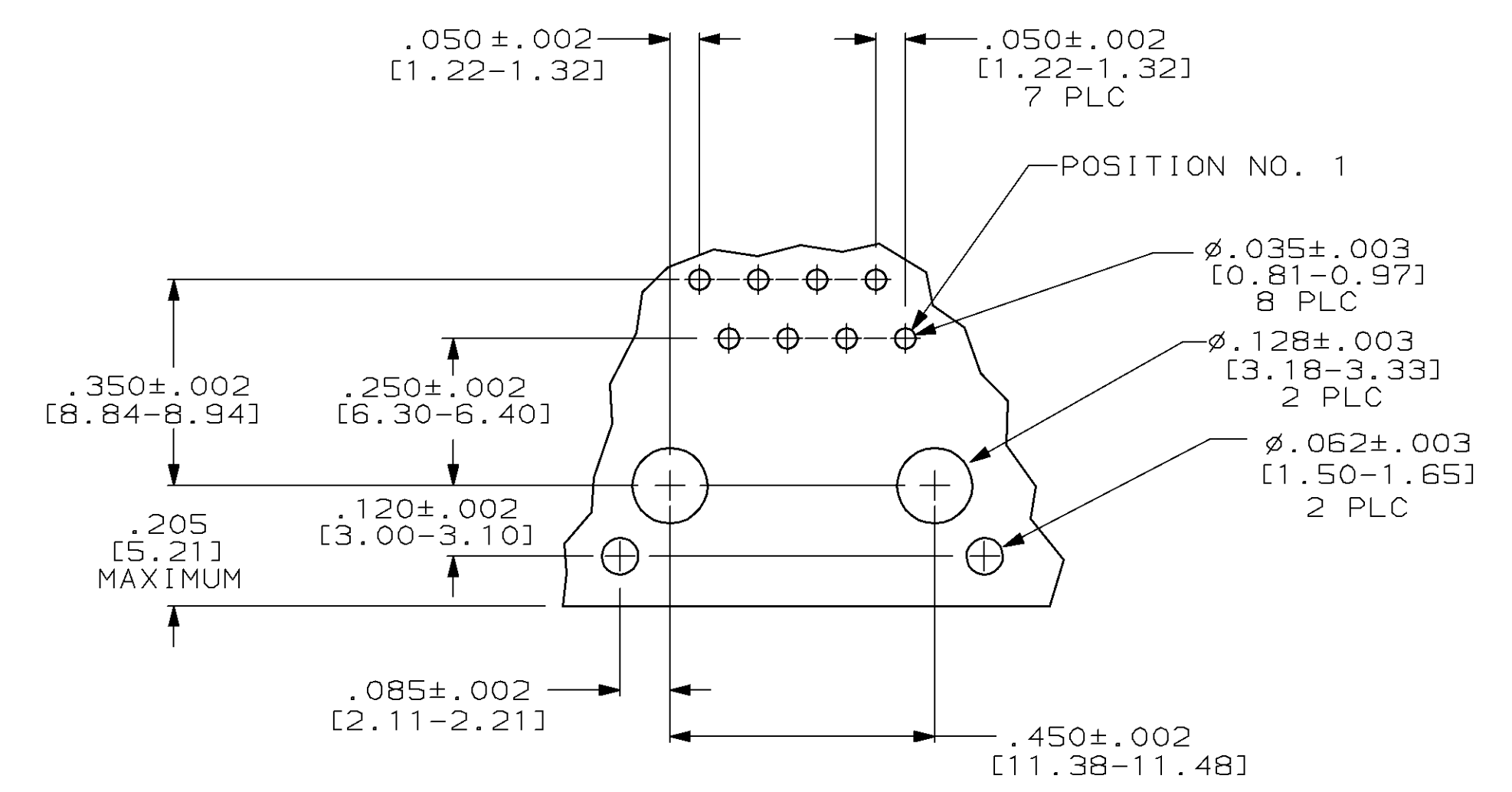
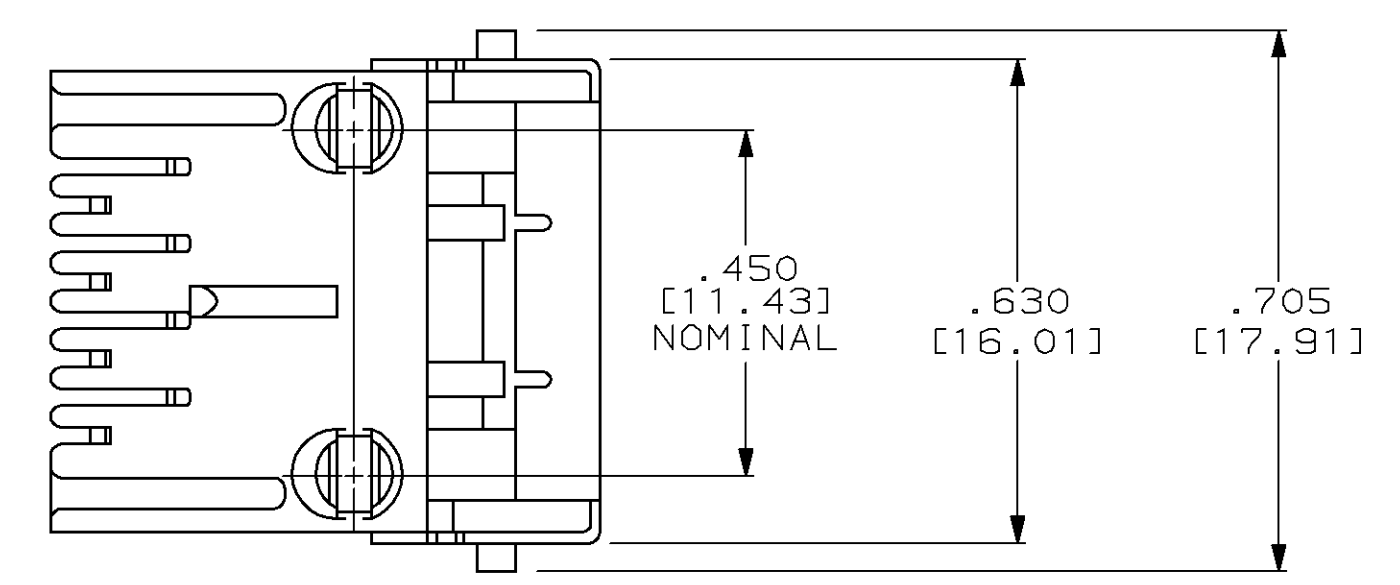
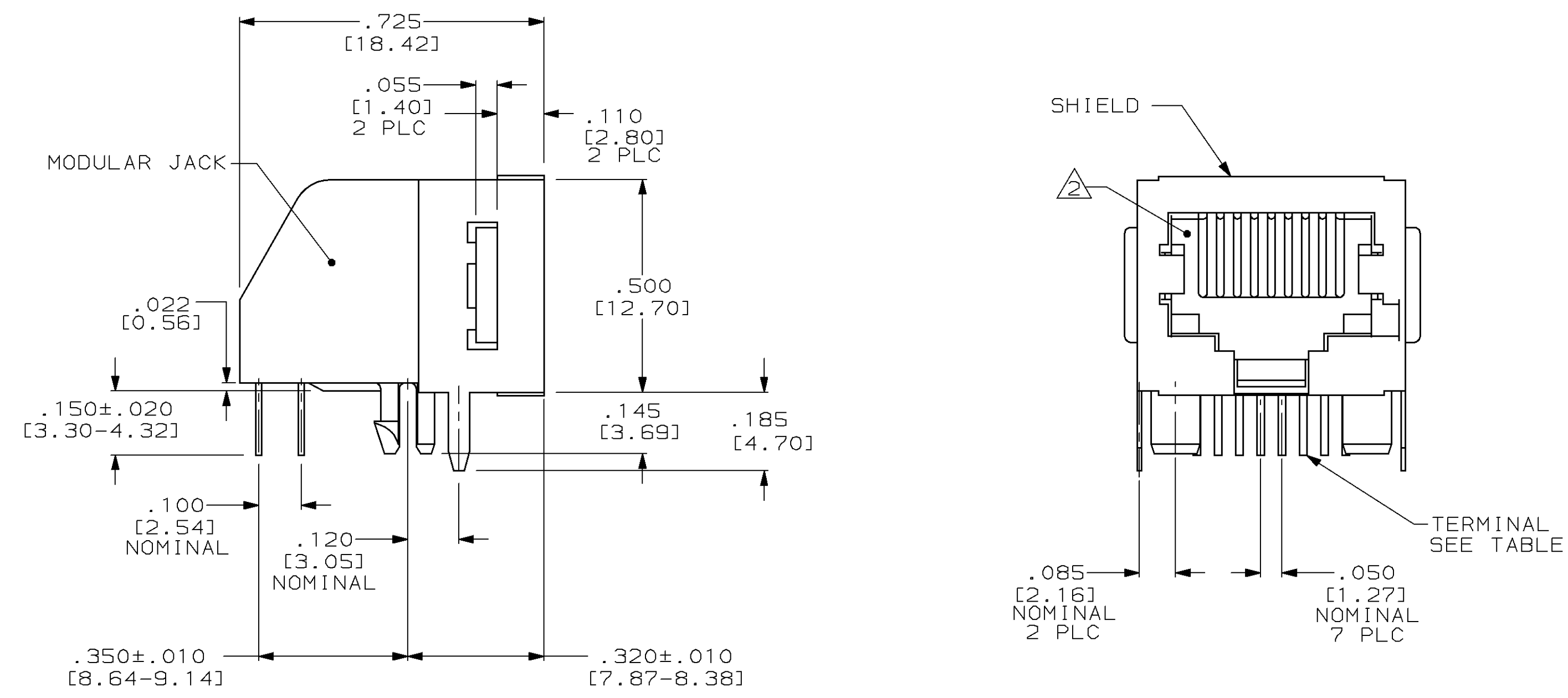


LOC	DIST	REV	DESCRIPTION	DATE	OWN	APVD
AA	22	E	085;-2;EC 0502-0845-97	20MAY98	D5	CB



SUGGESTED PRINTED CIRCUIT BOARD MOUNTING HOLE LAYOUT VIEW SHOWN AS CIRCUIT SIDE OF BOARD

- MATERIAL:  
HOUSING-PBT POLYESTER BLACK.  
TERMINAL-.014 [0.36] THICK PHOS-BRONZE PLATE WITH .000050 [1.27μm] THICK HARD GOLD IN LOCALIZED GOLD PLATE AREA AND .000080 [2.03μm] THICK TIN-LEAD IN SOLDER AREA OVER .000050 [1.27μm] THICK NICKEL UNDERPLATE.  
SHIELD-.010 [0.25] THICK COPPER ALLOY, TIN-LEAD PLATED.
- CAVITY CONFORMS TO FCC RULES AND REGULATIONS, PART 68, SUBPART F.
- FOR APPLICATION INFORMATION SEE AMP SPECIFICATION 114-2048.
- FOR PERFORMANCE REQUIREMENTS SEE AMP SPECIFICATION 108-1163.
- ALL DIMENSION SHOWN ARE MAXIMUM UNLESS OTHERWISE SPECIFIED.
- DIMENSIONS IN [ ] ARE MILLIMETERS.

8	556591-1
TERMINALS REQUIRED	PART NO.

DIMENSIONS (INCHES [mm])		TOLERANCES UNLESS OTHERWISE SPECIFIED:		MATERIAL		FINISH	
0 PLC	±	0 PLC	±	AMP	AMP Incorporated	11-16-89	11-16-89
1 PLC	±	1 PLC	±	FOX	Harrisburg, PA 17105-3508	12-14-89	12-14-89
2 PLC	±	2 PLC	±	M. PAYNE	NAME	12-18-89	12-18-89
3 PLC	±	3 PLC	±		MODULAR JACK ASSEMBLY, 8 POSITION, SHIELDED, KEYED, LOW PROFILE, RIGHT ANGLE WITH PRINTED BOARD GROUND AND PANEL STOPS		
4 PLC	±	4 PLC	±		APPLICATION SPEC		
ANGLES	±	ANGLES	±		WEIGHT		
					SCALE		
					SIZE		
					CAGE CODE		
					DRAWING NO		
					00779		
					556591		
					SCALE		
					4:1		
					SHEET		
					1 OF 1		
					REV		
					E		