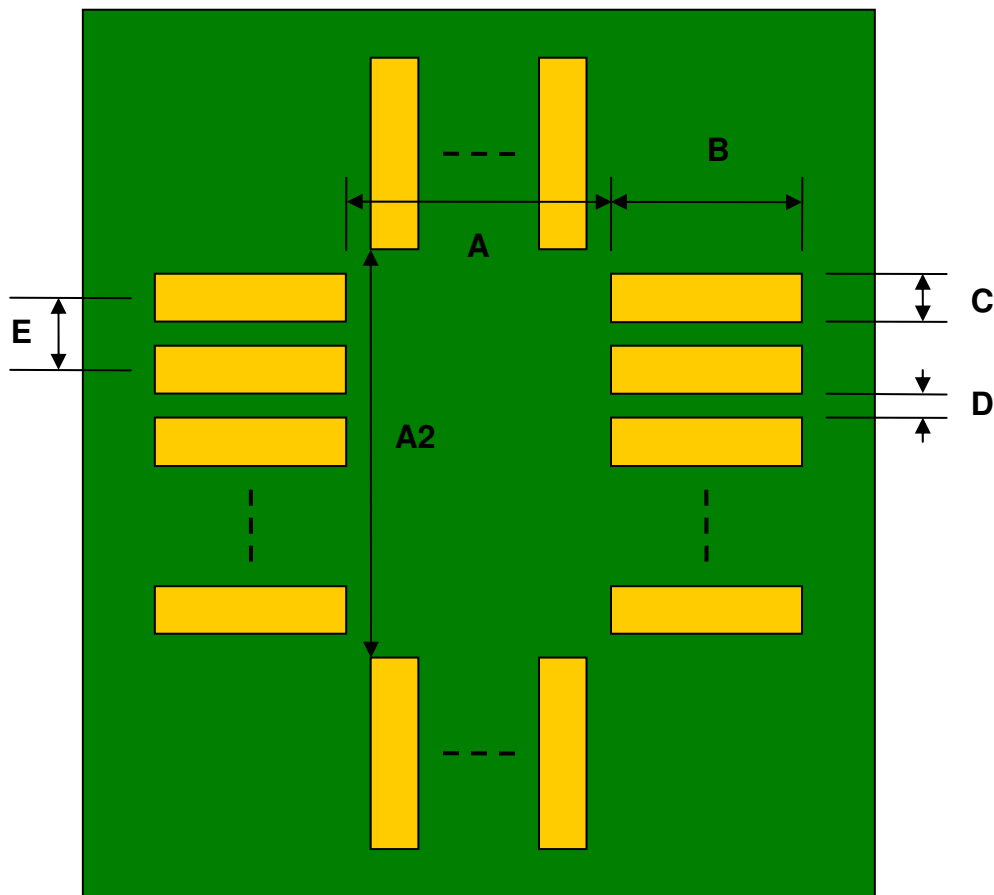


## PQFP-160 to PGA-160 SMT Adapter (0.65 mm pitch, 28 x 28 mm body)

REF.	DIMENSIONS					
	mm			inches		
	MIN.	TYP.	MAX.	MIN.	TYP.	MAX.
A		26.6				
A2		26.6				
B		3.00				
C		0.40				
D		0.25				
E		0.65				

Top View (SMT Footprint)



(Representative drawing only - not to scale)