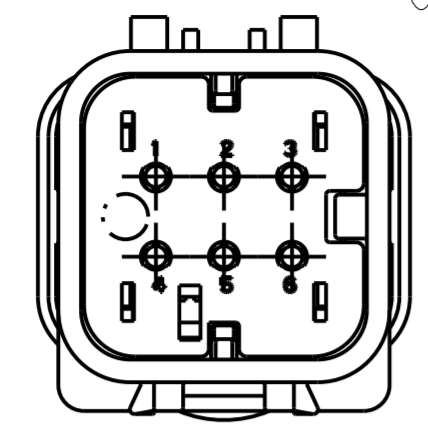
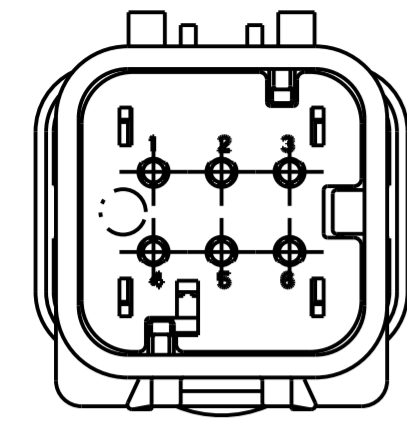
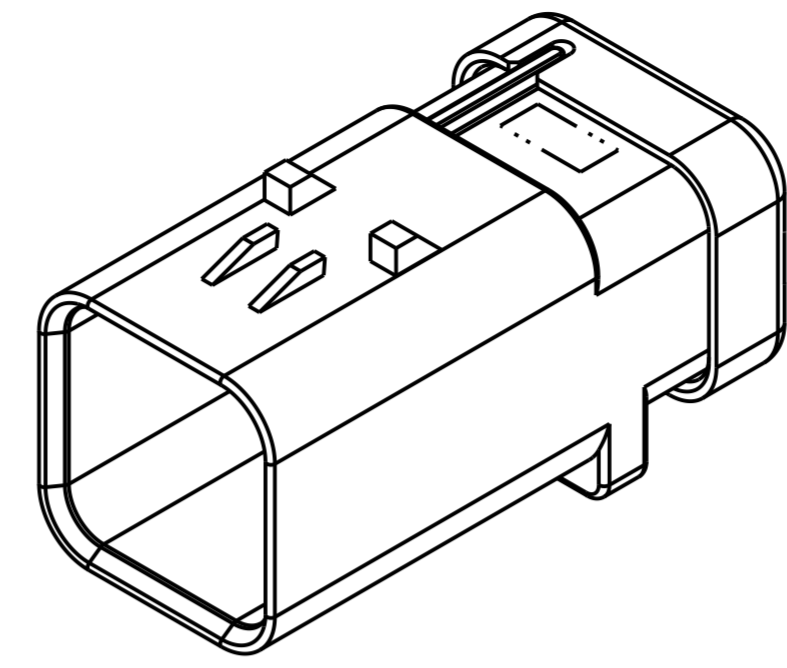
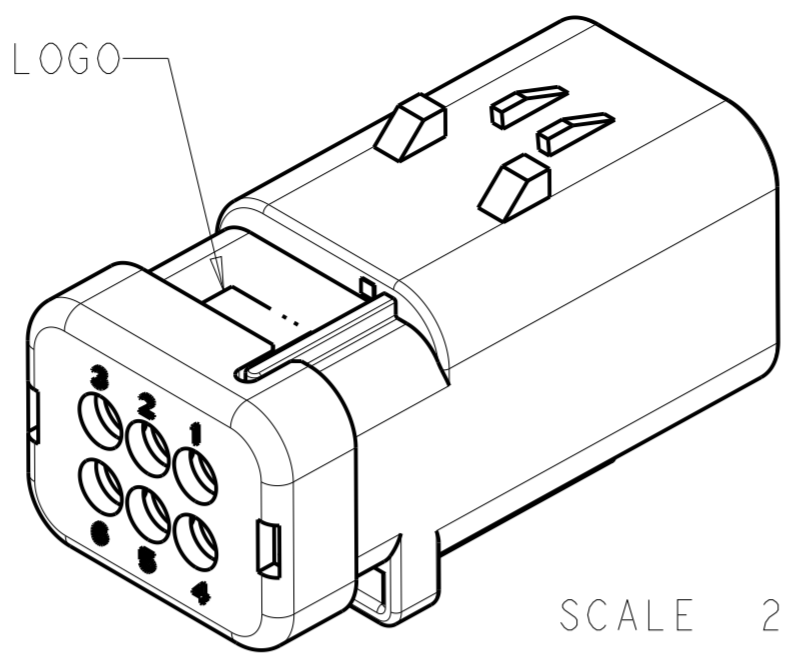


THIS DRAWING IS UNPUBLISHED. RELEASED FOR PUBLICATION. ALL RIGHTS RESERVED.

REVISIONS				
P	LTR	DESCRIPTION	DATE	APVD
A		NEW RELEASE	07APR2021	MK BC



COMPANY LOGO



1 MATERIAL: 15% FIBERGLASS REINFORCED PBT
COLOR: GRAY

2 MATERIAL: 15% FIBERGLASS REINFORCED PBT
COLOR: (SEE TABLE)

3 MATERIAL: SILICONE
COLOR: MARINE BLUE

4. RECOMMENDED WIRE DIAMETER RANGE IS 2.18 TO 3.67mm.

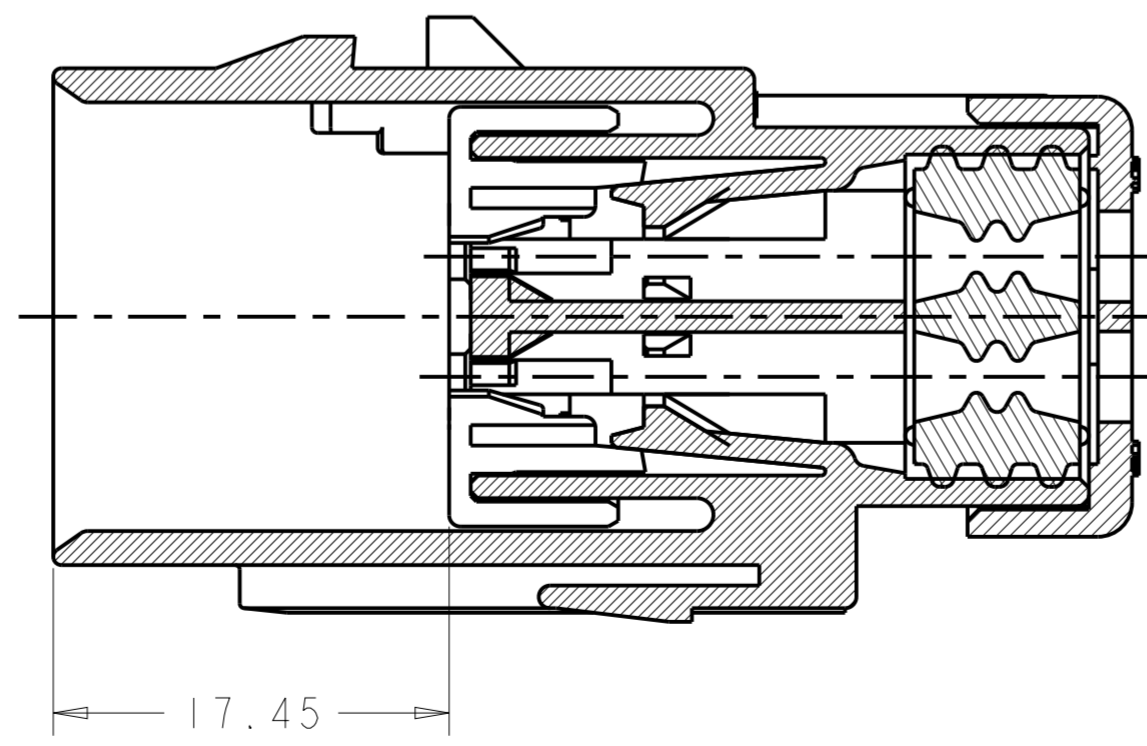
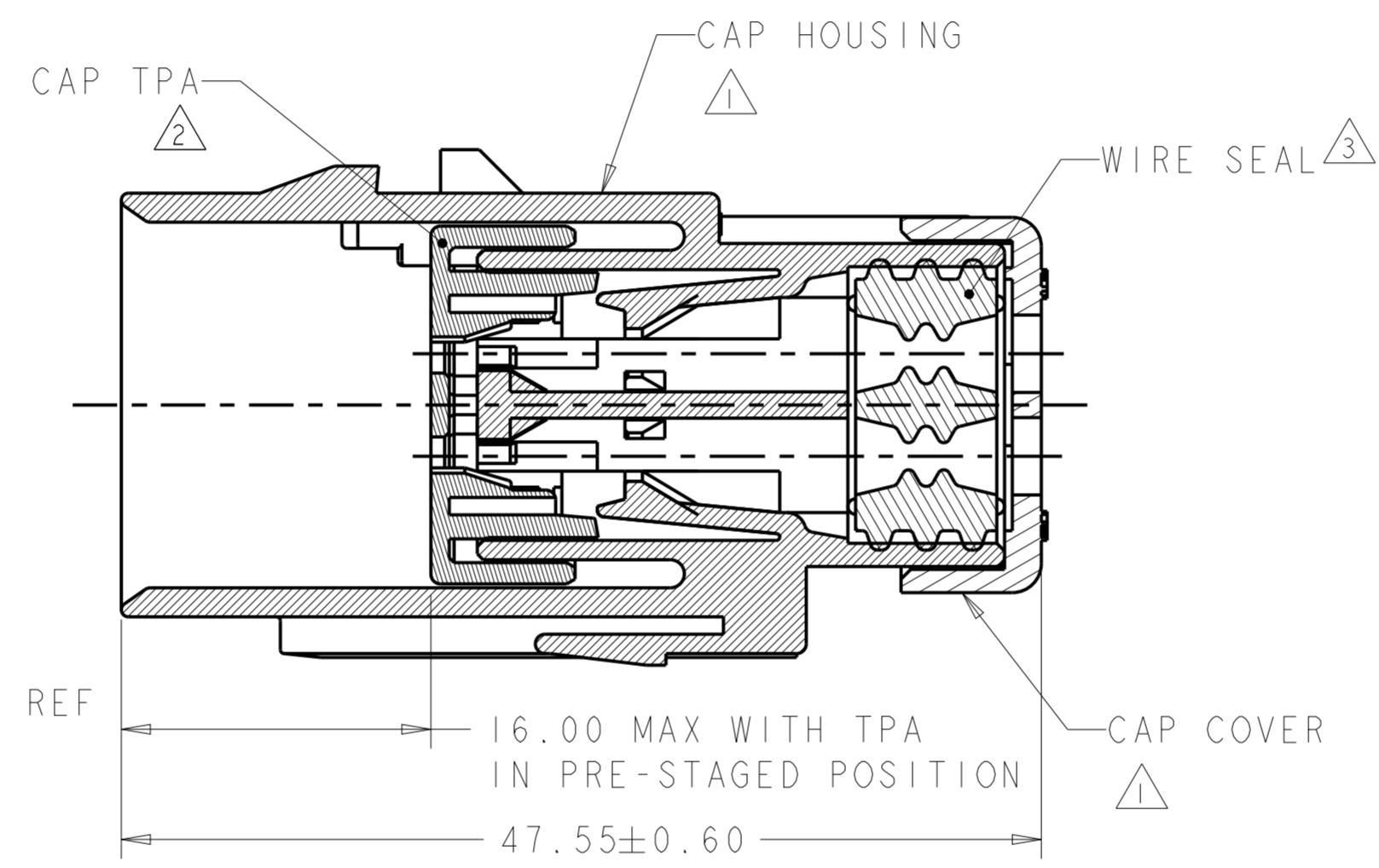
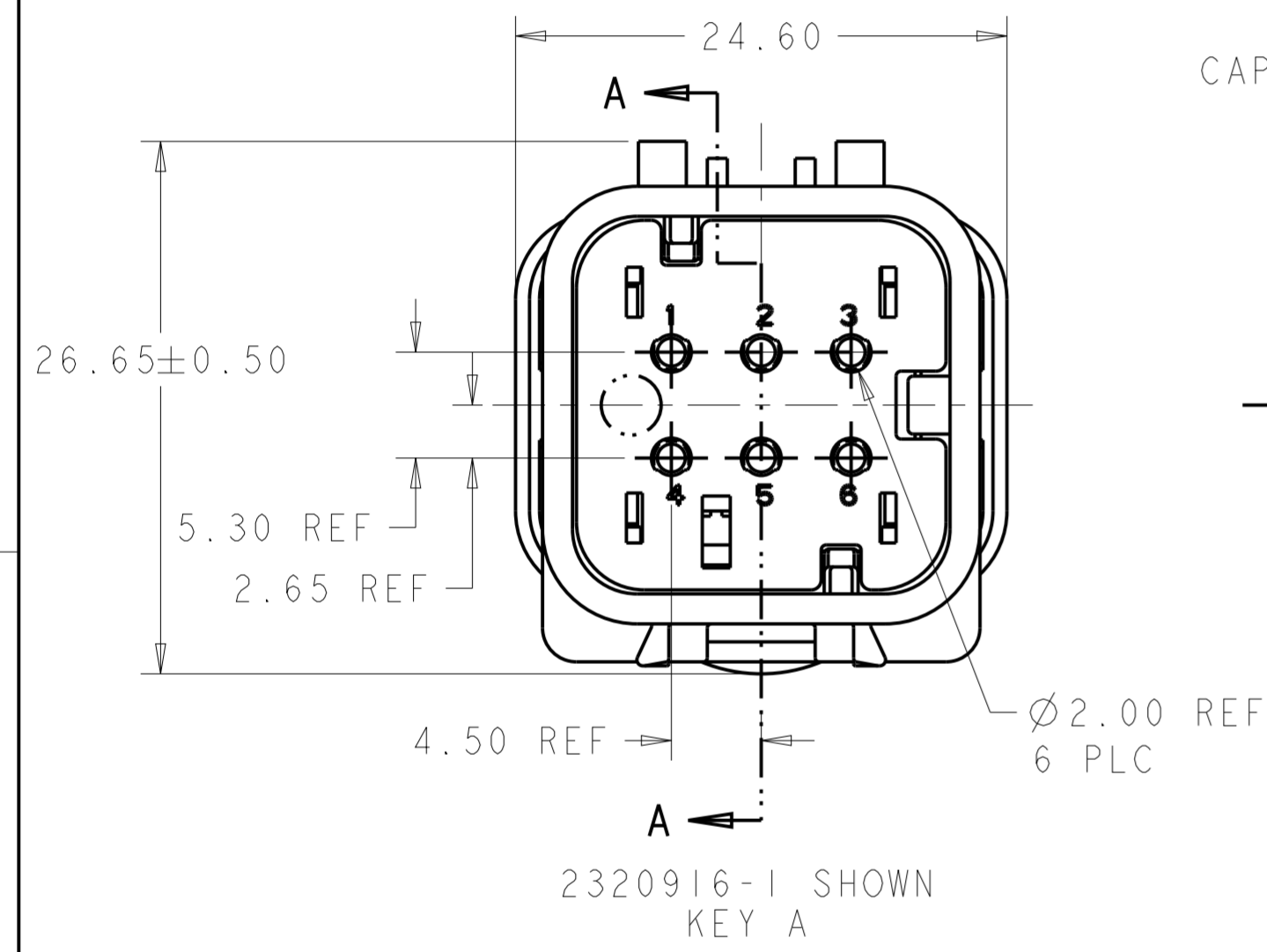
5. RECOMMENDED BACKSHELLS:

- STRAIGHT EXIT
 A. 2292863-1 SMOOTH WIRE EXIT
 B. 2292863-2 NCI6/NWI3 CONDUIT WIRE EXIT
 C. 2292863-3 NCI2/NWI0 CONDUIT WIRE EXIT

- 90° EXIT
 D. 2302484-1 SMOOTH WIRE EXIT
 E. 2302484-2 NCI6/NWI3 CONDUIT WIRE EXIT
 F. 2302484-3 NCI2/NWI0 CONDUIT WIRE EXIT

6. RECOMMENDED SEAL PLUG: 776363-1

7. MATING CONNECTOR: 2320923-X.



C	PURPLE	2320916-3
B	BLUE	2320916-2
A	TAN	2320916-1
KEY	TPA COLOR	PART NUMBER

THIS DRAWING IS A CONTROLLED DOCUMENT.

DWN	J. MCNEAL	05MAR2018
CHK	R. BALTER	05MAR2018
APVD	R. BALTER	05MAR2018

TE Connectivity

NAME: CAP ASSEMBLY, 6 POSITION, STD DIA SEAL, HIGH TEMP, AMPSEAL 16

PRODUCT SPEC	108-32602
APPLICATION SPEC	114-32362
WEIGHT	15.5

SIZE: A2 | CAGE CODE: - | DRAWING NO: C-2320916 | RESTRICTED TO: -

CUSTOMER DRAWING | SCALE: 1:1 | SHEET: 1 OF 1 | REV: A