

- NOTES:**
- MATERIALS:**  
 RAW CABLE- 2 TWIN-AX PAIRS, PVC JACKET  
 BACKSHELLS - ZINC DIECAST WITH BRIGHT NICKEL PLATING  
 RIVETS - STAINLESS STEEL
  - IMPEDANCE - 100 OHMS DIFFERENTIAL**
  - RoHS COMPLIANT, NO EXEMPTIONS**
  - EEPROM SPEC IS COMPLIANT TO SFF 8636 REV 2.7 AT zQSFP+ END AND SFF 8472 REV 12.2 AT zSFP+ END**
  - EEPROM MAP AVAILABLE UPON REQUEST**

MOLEX P/N	LENGTH(M)	TOL.(M)	AWG	RAW CABLE
2058971052	0.5	0.05	30	TEMPFLEX
2058971102	1.0	0.05	30	
2058971152	1.5	0.08	30	
2058971202	2.0	0.08	30	
2058973102	1.0	0.05	26	
2058973152	1.5	0.08	26	
2058973202	2.0	0.08	26	
2058973252	2.5	0.08	26	
2058973302	3.0	0.08	26	

LENGTHS BELOW 1M MAY NOT MEET ALL PARAMETERS OF 802.3cd

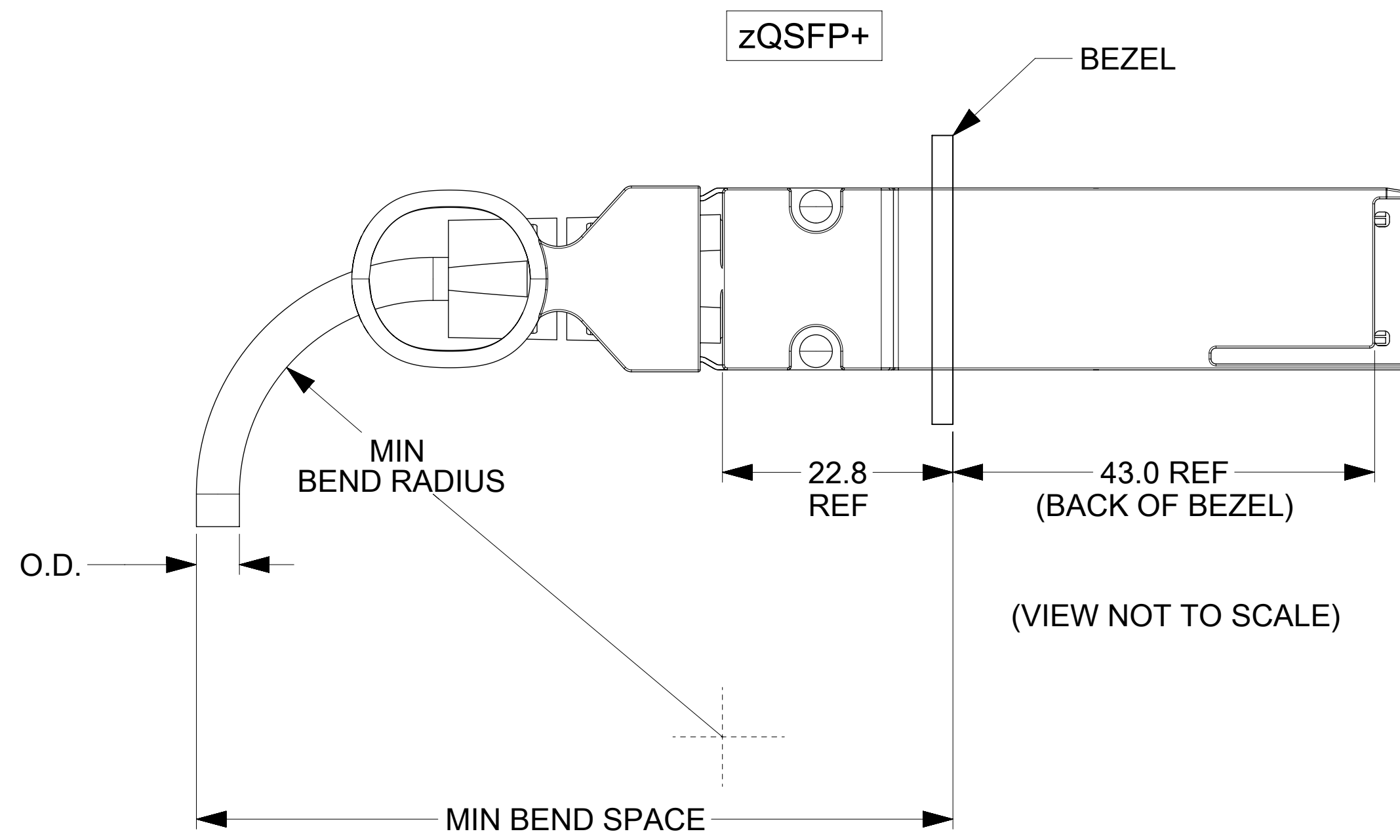
QUALITY SYMBOLS F = 0 E = 0 E = 0 C = 0 C = 0 X = 0 = 0 V = 0	THIS DRAWING CONTAINS INFORMATION THAT IS PROPRIETARY TO MOLEX ELECTRONIC TECHNOLOGIES, LLC AND SHOULD NOT BE USED WITHOUT WRITTEN PERMISSION				DIMENSION UNITS <b>mm</b>		SCALE <b>1.5:1</b>				
	GENERAL TOLERANCES (UNLESS SPECIFIED)		DRWN BY <b>SJKG</b>		DATE <b>2017/10/31</b>		<b>ZQSFP+ TO 4ZSFP+ PAM4 56G CBL ASSY</b>				
	ANGULAR TOL ± 1.0 °		CHKD BY <b>KNAGANNA</b>		DATE <b>2017/11/22</b>					PRODUCT CUSTOMER DRAWING	
	4 PLACES ±		APPR BY <b>EMEDINA02</b>		DATE <b>2017/11/22</b>		SERIES: <b>205897</b> MATERIAL NUMBER: <b>SEE P/N TABLE</b> CUSTOMER: <b>GENERAL MARKET</b>				
3 PLACES ±		DRAFT WHERE APPLICABLE MUST REMAIN WITHIN DIMENSIONS		DRAWING SIZE <b>D</b>		THIRD ANGLE PROJECTION				DOCUMENT NUMBER: <b>2058971052</b> DOC TYPE: <b>PSD</b> DOC PART: <b>000</b> SHEET NUMBER: <b>1 OF 3</b>	

WIRING DIAGRAM					
zQSFP+		zSFP+		PLUG	
PAD	SIGNAL	SIGNAL	PAD		
38	GND	----	GND	A	
37	TX1-	--->	RD-		12
36	TX1+	--->	RD+		13
19	GND	----	GND		18
17	RX1+	<---	TD+	18	
18	RX1-	<---	TD-	19	
01	GND	----	GND	B	
02	TX2-	--->	RD-		12
03	TX2+	--->	RD+		13
20	GND	----	GND		18
22	RX2+	<---	TD+	18	
21	RX2-	<---	TD-	19	
35	GND	----	GND	C	
34	TX3-	--->	RD-		12
33	TX3+	--->	RD+		13
16	GND	----	GND		18
14	RX3+	<---	TD+	18	
15	RX3-	<---	TD-	19	
04	GND	----	GND	D	
05	TX4-	--->	RD-		12
06	TX4+	--->	RD+		13
23	GND	----	GND		18
25	RX4+	<---	TD+	18	
24	RX4-	<---	TD-	19	

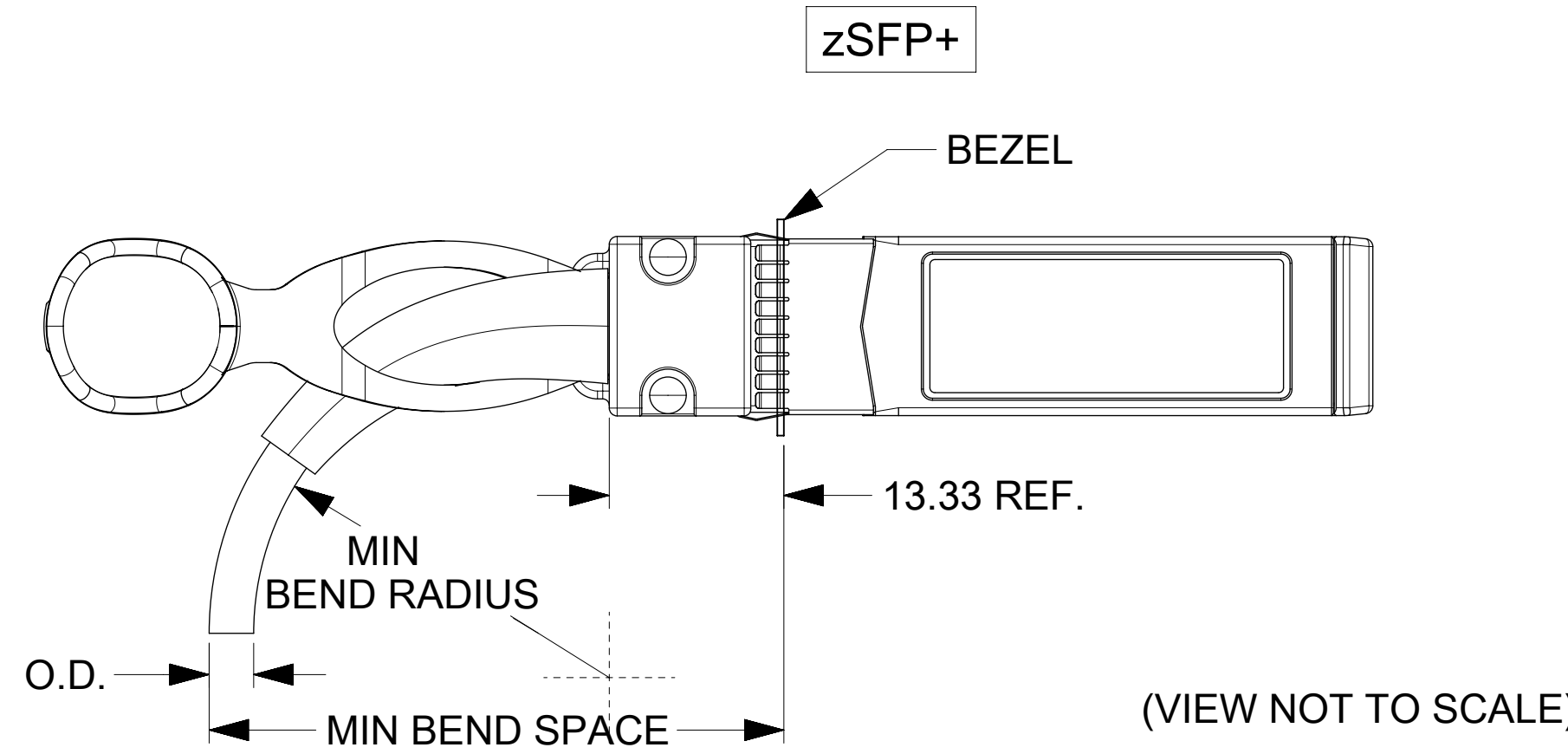
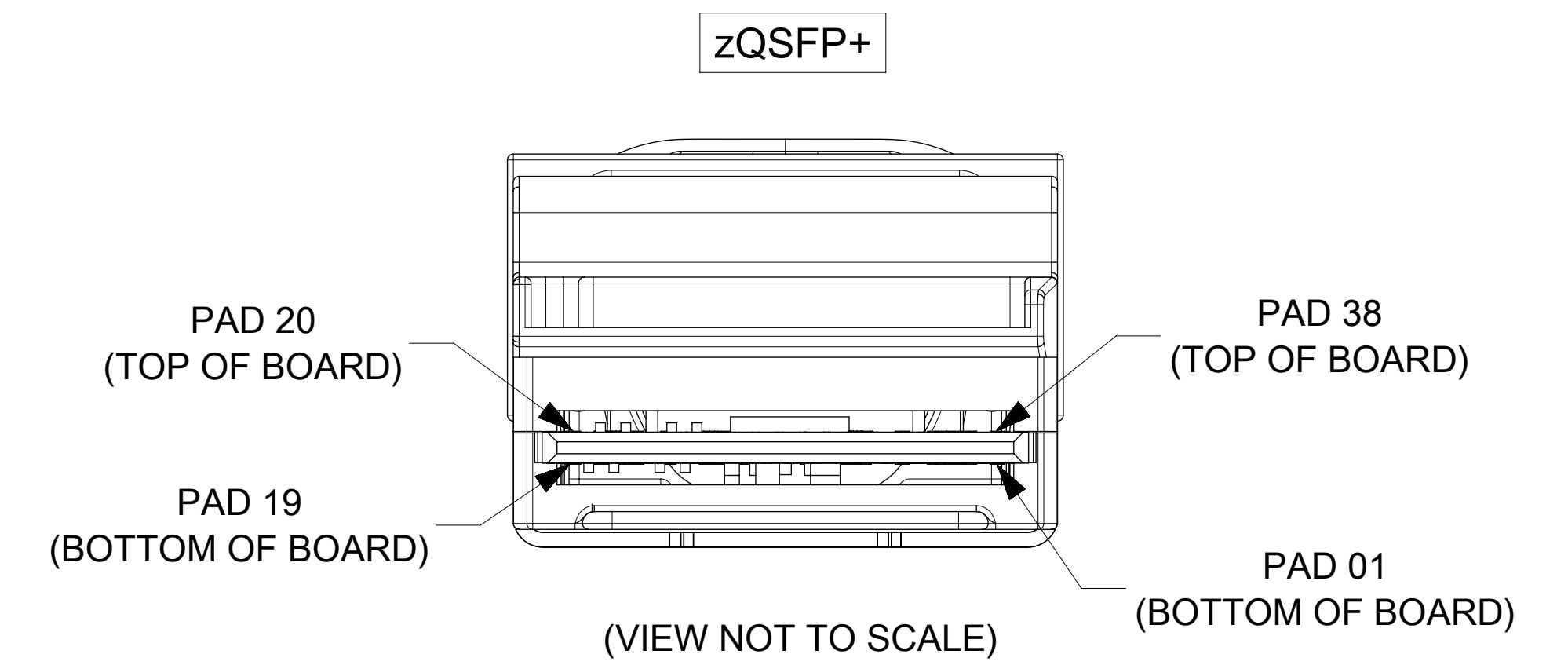
LOW SPEED SIGNALS zQSFP+	
PAD	SIGNAL
08	ModSelL
09	ResetL
10	VccRx
11	SCL
12	SDA
27	ModPrsL
28	IntL
29	VccTx
30	Vcc1
31	LPMODE

LOW SPEED SIGNALS zSFP+	
PAD	SIGNAL
02	Tx_Fault
03	Tx_Disable
04	SDA
05	SCL
06	Mod_ABS
07	RS0
08	Rx_LOS
09	RS1
15	VccR
16	VccT

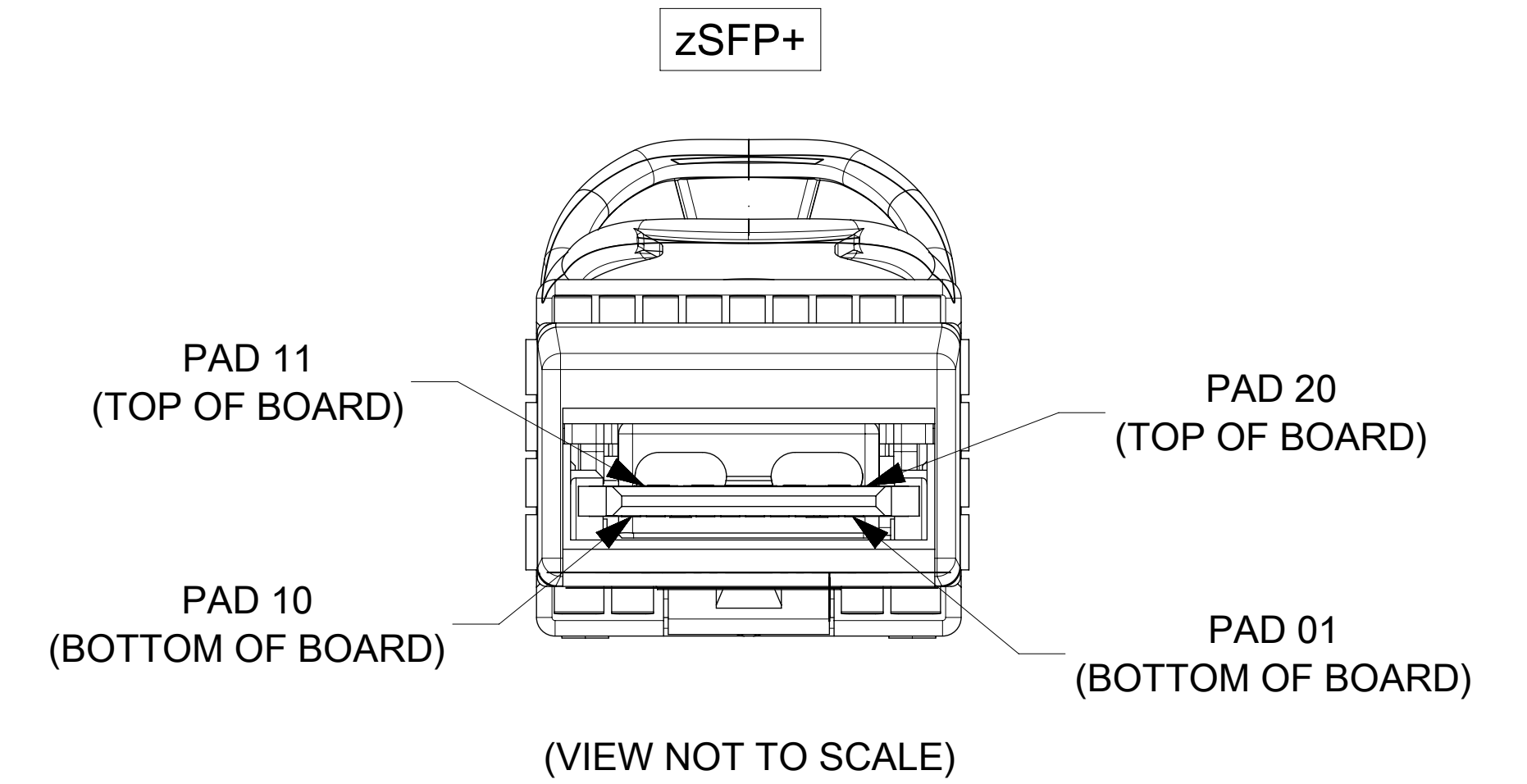
### CABLE BEND RADIUS



CABLE AWG	OD OF CBL BUNDLE	MIN BEND RADIUS (mm)	MIN BEND SPACE (mm)
30	4.83	24	56
26	5.8	29	63



CABLE AWG	OD	MIN BEND RADIUS (mm)	MIN BEND SPACE (mm)
30	4.83	24	42
26	5.80	29	48

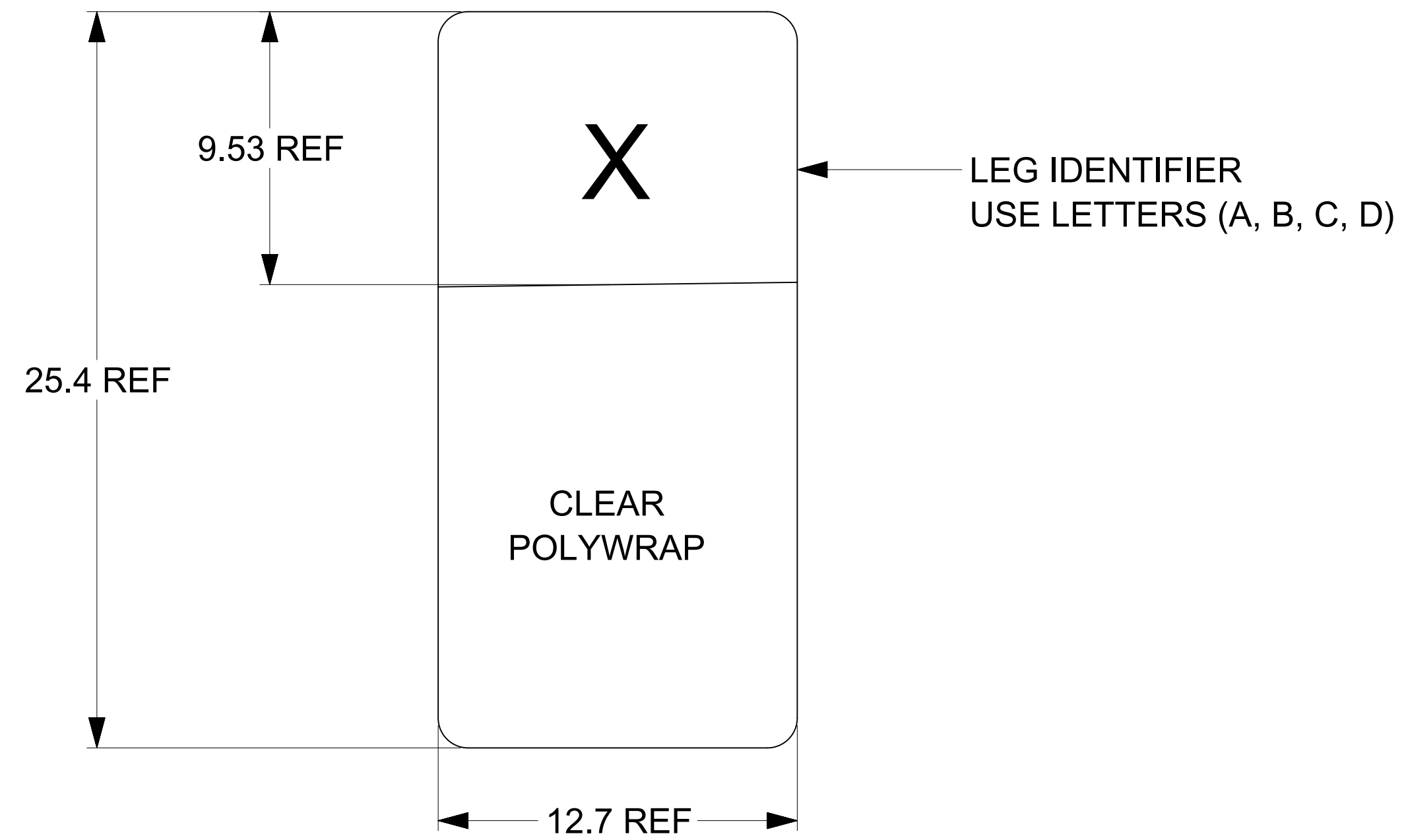


LEGEND:  
 ---- = DRAIN LINES  
 ---> = TRANSMIT TO RECEIVE ON HIGH SPEED CIRCUITS

NOTES:  
 1. DC BLOCKING CAPS ON RECIEVE SIDE ONLY  
 2. CABLE COILED AND PACKAGED IN BEST FIT ESD BAG AND SEALED WITH ESD LABEL FOR SHIPPING.

QUALITY SYMBOLS F = 0 E = 0 D = 0 C = 0 B = 0 A = 0 0 = 0	THIS DRAWING CONTAINS INFORMATION THAT IS PROPRIETARY TO MOLEX ELECTRONIC TECHNOLOGIES, LLC AND SHOULD NOT BE USED WITHOUT WRITTEN PERMISSION		DIMENSION UNITS <b>mm</b>	SCALE <b>1:1</b>		
	GENERAL TOLERANCES (UNLESS SPECIFIED) ANGULAR TOL ± 1.0 ° 4 PLACES ± 3 PLACES ± 2 PLACES ± 0.13 1 PLACE ± 0.25 0 PLACES ±	DRWN BY <b>SJKG</b>	DATE <b>2017/10/31</b>	CHKD BY <b>KNAGANNA</b>		DATE <b>2017/11/22</b>
DRAFT WHERE APPLICABLE MUST REMAIN WITHIN DIMENSIONS	EC NO: 171930 DRWN: SJKG CHKD: SJKG REV: ARAYBURN	APPR BY <b>EMEDINA02</b>	DATE <b>2017/11/22</b>	DRAWING SIZE <b>D</b>	THIRD ANGLE PROJECTION	PRODUCT CUSTOMER DRAWING
ADDED NOTE ON SHEET 1	SERIES <b>205897</b>	MATERIAL NUMBER <b>SEE P/N TABLE</b>	CUSTOMER <b>GENERAL MARKET</b>	DOCUMENT NUMBER <b>2058971052</b>	DOC TYPE <b>PSD</b>	DOC PART SHEET NUMBER <b>000 2 OF 3</b>

**LEG ID LABEL**



**CABLE ID LABEL**



P/N (SEE P/N TABLE)  
 X.XM = LENGTH AS SHOWN IN TABLE  
 XXAWG = AWG SIZE

YYDDLSSSS  
 YY = LAST TWO DIGITS OF THE YEAR  
 DDD = DAY OF THE YEAR  
 L = LOCATION  
     1 = US  
     2 = MEXICO  
     3 = CHINA  
     4 = PHILIPPINES  
 SSSS = (0001-9999)

QUALITY SYMBOLS		THIS DRAWING CONTAINS INFORMATION THAT IS PROPRIETARY TO MOLEX ELECTRONIC TECHNOLOGIES, LLC AND SHOULD NOT BE USED WITHOUT WRITTEN PERMISSION										
	= 0	ADDED NOTE ON SHEET 1 EC NO: 171930 DRWN: SJKG CHKD: SJKG REV APPR: ARAYBURN 2018/01/29 2018/02/07 2018/02/07	GENERAL TOLERANCES (UNLESS SPECIFIED)		DIMENSION UNITS	SCALE	 ZQSFP+ TO 4ZSFP+ PAM4 56G CBL ASSY					
	= 0		ANGULAR TOL ± 1.0 °		mm	1:1						
	= 0		4 PLACES ±	DRWN BY	DATE	SJKG					2017/10/31	
	= 0		3 PLACES ±	CHKD BY	DATE	KNAGANNA	2017/11/22	PRODUCT CUSTOMER DRAWING				
	= 0		2 PLACES ± 0.13	APPR BY	DATE	EMEDINA02	2017/11/22	SERIES	MATERIAL NUMBER	CUSTOMER		
	= 0		1 PLACE ± 0.25	DRAWING SIZE		THIRD ANGLE PROJECTION		205897	SEE P/N TABLE	GENERAL MARKET		
	= 0		0 PLACES ±	DRAFT WHERE APPLICABLE MUST REMAIN WITHIN DIMENSIONS		D		DOCUMENT NUMBER	DOC TYPE	DOC PART	SHEET NUMBER	
	= 0							2058971052	PSD	000	3 OF 3	