

BS,C ,202175,161

C

GEN. ST.
INT. ST.

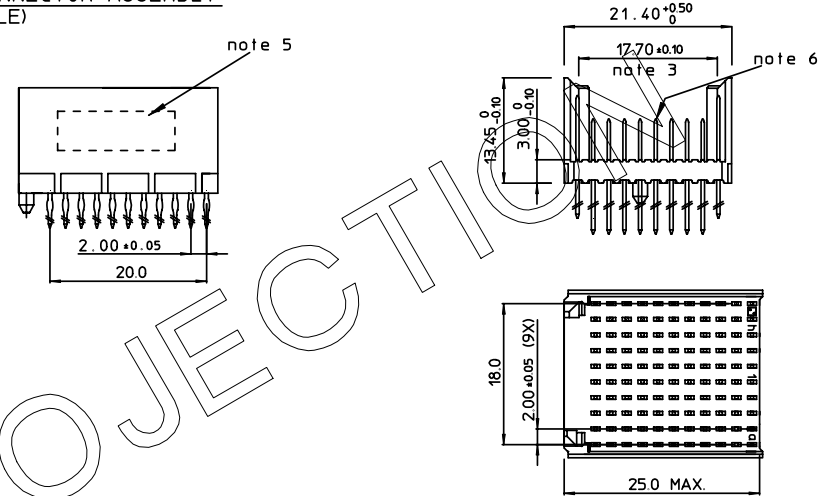
01	02	03	04	05	06	07	08	0D	50	60	70	80	90																	
10	11	12	13	14	18	20	31	32	33	34	38	39	40	42	43	44	45	46	48	56	70	72	73	75	76	81	82	83	84	88

REV.	DATE	DESCRIPTION	BY	C'K'D'
A	2001-09-14	CONVERSION REVISION 01	KN	
B	2005-11-09	105-0226	ALEX B	BKP
C	2006-08-05	106-0143	VIVEK	BKP

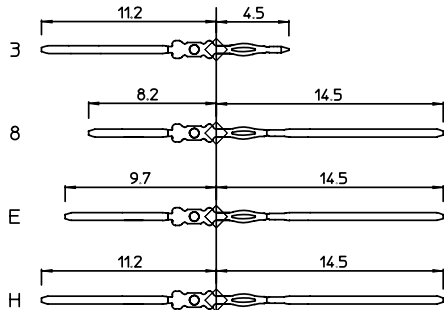
LOADING PATTERN MATING SIDE

y	3	3	3	3	3	3	3	3	3	3	3	3	3	3	3
h	8	8	8	8	8	8	8	8	8	8	8	8	8	8	8
g	E	E	E	E	E	E	E	E	E	E	E	E	E	E	E
f	E	E	E	E	E	E	E	E	E	E	E	E	E	E	E
e	H	H	H	H	H	H	H	H	H	H	H	H	H	H	H
d	H	H	H	H	H	H	H	H	H	H	H	H	H	H	H
c	E	E	E	E	E	E	E	E	E	E	E	E	E	E	E
b	E	E	E	E	E	E	E	E	E	E	E	E	E	E	E
a	8	8	8	8	8	8	8	8	8	8	8	8	8	8	8
z	3	3	3	3	3	3	3	3	3	3	3	3	3	3	3
sop	0	1	0	5	1	0									

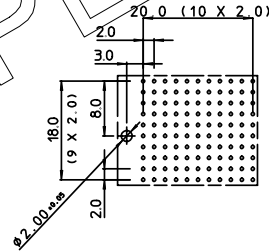
LOADED CONNECTOR ASSEMBLY (FOR EXAMPLE)



CONTACT OVERVIEW



LAY-OUT P.C.B.-HOLE



SEATING PLANE FOR CONNECTOR


HM2P82PME1P1

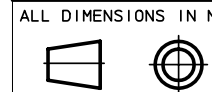
LEAD FREE INDICATOR : LF = LEAD FREE (DIGIT 15 & 16)

PLATING CODE (DIGIT 13 AND 14)
(REF DWG No. BS,C ,201844,003)

NOTES:

1. THIS PRODUCT IS CSA APPROVED.
2. THIS PRODUCT IS UL RECOGNIZED.
3. MEASURED AT THE BOTTOM.
4. MATERIAL CONTACT: PHOSPHORBRONZE
HOUSING: CREAM WHITE GLASSFILLED POLYESTER UL-94V0
5. CONNECTOR PRINTED WITH P/N AND DATE CODE.
6. FOR ACTUAL CONTACT LOADINGS, SEE LOADING PATTERN MATING SIDE.
7. SHAPE OF CONNECTOR HOUSING CAN ALTER DEPENDING ON PRODUCTION LOCATION.
8. THE PRODUCT (LF) MEETS EUROPEAN UNION DIRECTIVES AND OTHER COUNTRY REGULATIONS AS DESCRIBED IN GS-22-008
9. FOR RECOMMENDED PTH DIMENSIONS REFER DRAWING : BS,A ,201572,001

1DEC ±0.2 2DEC ±0.1 ANGLES ±1°	APPR.	DATE	SIGN.	LOADING PATTERN OVERVIEW (8+2 ROW) CAT. No. HM2P82PME1P1----
	DRAFT	2000-03-13	M.Fret	
WE RESERVE THE RIGHT TO CHANGE DIMENSIONS OR REQUIREMENTS WITHOUT PRIOR NOTICE.	CHECKED			SCALE
	PROD. MGR			
	PR. ENG. MGR			
ALL DIMENSIONS IN MM	PR.MGT. MGR			 www.fciconnect.com



REFERENCES

BS,C ,202175,161 C

DRAWING No. CUSTOMER DRAWING REVISION

THIS IS OUR EXCLUSIVE PROPERTY. IT IS NOT TO BE COPIED, REPRINTED OR DISCLOSED TO A THIRD PARTY, NOR USED FOR MANUFACTURING WITHOUT OUR WRITTEN CONSENT, AND HAS TO BE RETURNED TO US IN CASE OF NO USAGE

DIT IS ONZE EIGENDOM EN MAG NIET NAGEMAAKT, HERDRUKT, OVERNEMMAKT AAN DERDEN, NOCH VOOR FABRICATIE GEBRUIKT WORDEN, ZONDER ONZE SCHRIFTELIJKE TOELATING. BIJ NIET GEBRUIK IS TERUGZENDING VERPLICHT.

PDM: Rev:C

STATUS: Released

Printed: Dec. 02/2007

8

7

6

5

4

CADWIN