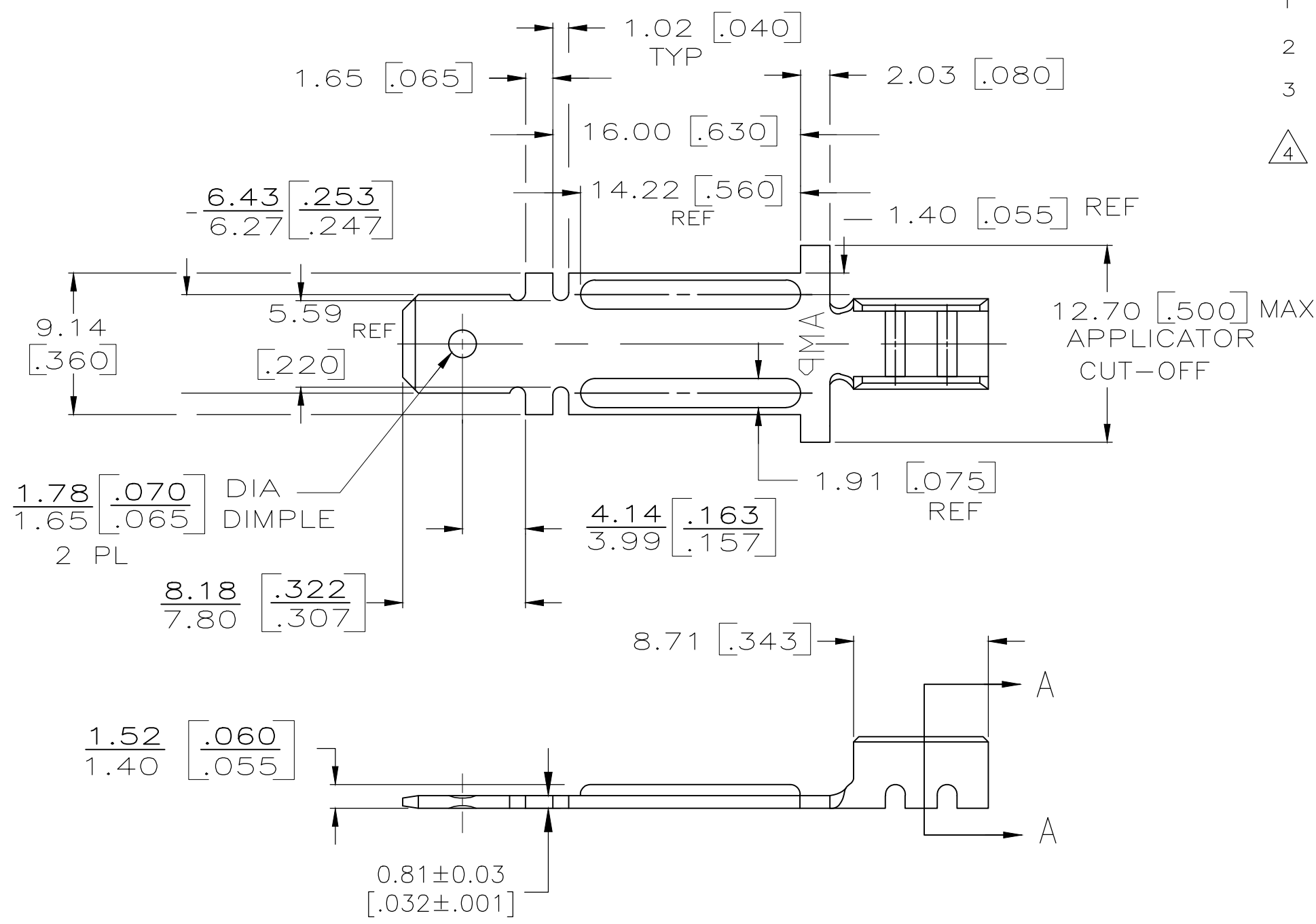
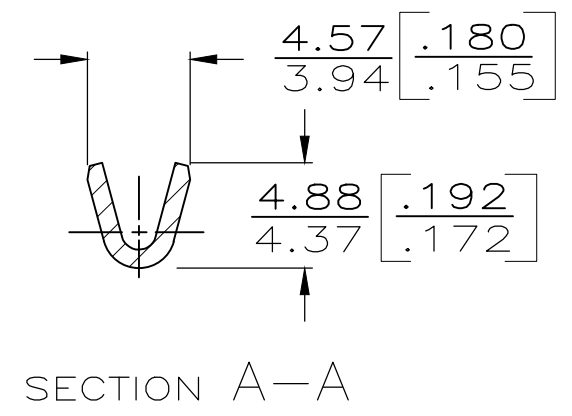


THIS DRAWING IS UNPUBLISHED. RELEASED FOR PUBLICATION
 © COPYRIGHT - TE Connectivity ALL RIGHTS RESERVED.

REVISIONS				
P	LTR	DESCRIPTION	DATE	DWN APVD
E3		REVISED PER ECR-20-015240	02NOV2020	BDA DH



- 1 CONTINUOUS STRIP ON REELS.
- 2 WIRE SIZE IS 0.30-1.45MM DIA [22-15]
- 3 SEE SHEET 2 FOR SUGGESTED LOCKING IN CERAMIC.
- △ 4 REVERSE REELING OF 63301-1



NICKEL PLATE	STEEL	△ 4 63301-3
NICKEL PLATE	STEEL	63301-1
FINISH	MATERIAL	PART NUMBER

THIS DRAWING IS A CONTROLLED DOCUMENT.		DWN JR RUTH 5/9/86	STE TE Connectivity	
DIMENSIONS: mm [INCHES]		CHK G YETTER 5/20/86		
TOLERANCES UNLESS OTHERWISE SPECIFIED:		APVD C MEYERS 5/20/86	NAME .250 TAB FOR NI-CHROME WIRE	
0 PLC ± -		PRODUCT SPEC -	SIZE CAGE CODE DRAWING NO RESTRICTED TO	
1 PLC ± -		APPLICATION SPEC -	A3 00779 C-63301	
2 PLC ± -		WEIGHT -	SCALE NTS SHEET 1 OF 1 REV E3	
3 PLC ± 0.25 [.010]		CUSTOMER DRAWING		
4 PLC ± -				
ANGLES ± -				
MATERIAL SEE TABLE	FINISH SEE TABLE			