

- 1
- 2
- 3
- 4
- 5
- 6
- 7
- 8
- 9
- 10
- 11
- 12
- 13
- 14
- 15
- 16
- 17
- 18

MATERIAL

Polyamide based (PA) technopolymer, black colour, matte finish.

STANDARD EXECUTION

DIN 934 zinc-plated steel nut (included in the supply).

FEATURES AND APPLICATIONS

The two end-cap parts are connected together by means of two pins which are housed in special counter-seats. A cavity inside the end-cap is provided for housing an hexagonal nut DIN 934.

The assembly can be performed simply by positioning the end-cap inside the tube, with no need of screws or other fasteners.

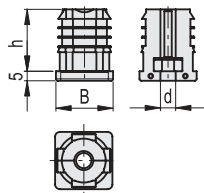
SPECIAL EXECUTIONS ON REQUEST

End-cap without nut.

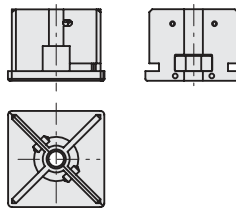


Conversion Table 1 mm = 0.039 inch	
B	
mm	inch
20	0.79
25	0.98
30	1.18
35	1.38
40	1.57
50	1.97

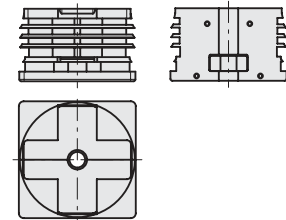
NDL.Q-20 ÷ NDL.Q-40



NDL.Q-50 M8+M10



NDL.Q-50x3-M12
NDL.Q-60



The geometry of the end-cap in the part that is inserted into the tube may vary for the different dimensions.

METRIC

Code	Description	B	d	h	Tube external diameter	Tube internal diameter min-max	Tube thickness min-max	Max. static load* [N]	⚖️
430551	NDL.Q-20x1.5-2-M6	20	M6	34	20	17-16	1.5-2	3000	10
430553	NDL.Q-20x1.5-2-M8	20	M8	34	20	17-16	1.5-2	3000	11
430555	NDL.Q-20x1.5-2-M10	20	M10	33	20	17-16	1.5-2	3000	16
430557	NDL.Q-20x2-M8	20	M8	34	20	16	2	3000	11
430561	NDL.Q-25x1-1.5-M8	25	M8	34	25	23-22	1-1.5	3000	17
430563	NDL.Q-25x1.5-M10	25	M10	33	25	22	1.5	3000	21
430565	NDL.Q-25x2-M8	25	M8	34	25	21	2	3000	16
430567	NDL.Q-25x2-M10	25	M10	34	25	21	2	3000	20
430571	NDL.Q-30x1.5-2-M8	30	M8	34	30	27-26	1.5-2	3000	20
430573	NDL.Q-30x1.5-2-M10	30	M10	34	30	27-26	1.5-2	3000	24
430575	NDL.Q-30x2.5-M10	30	M10	33	30	25	2.5	3000	24
430581	NDL.Q-35x1-2-M10	35	M10	34	35	33-31	1-2	3000	30
430583	NDL.Q-35x1.5-M12	35	M12	34	35	32	1.5	3000	37
430585	NDL.Q-35x1.5-2-M8	35	M8	34	35	32-31	1.5-2	3000	26
430587	NDL.Q-35x1.5-2-M12	35	M12	34	35	32-31	1.5-2	3000	36
430591	NDL.Q-40x1.5-2-M8	40	M8	33	40	37-36	1.5-2	3000	38
430593	NDL.Q-40x1.2-1.5-M10	40	M10	33	40	37.6-37	1.2-1.5	3000	42
430595	NDL.Q-40x1.5-2-M10	40	M10	33	40	37-36	1.5-2	3000	41
430597	NDL.Q-40x1.5-2-M12	40	M12	33	40	37-36	1.5-2	3000	44
430599	NDL.Q-40x1.5-2-M16	40	M16	33	40	37-36	1.5-2	3000	55
430601	NDL.Q-40x2-M8	40	M8	34	40	36	2	3000	26
430603	NDL.Q-40x3-M10	40	M10	33	40	34	3	3000	41
430611	NDL.Q-50x1.5-M10	50	M10	34	50	47	1.5	3000	42
430613	NDL.Q-50x2-M8	50	M8	34	50	46	2	3000	37
430615	NDL.Q-50x2-M10	50	M10	32	50	46	2	3000	41
430617	NDL.Q-50x2.5-M10	50	M10	33	50	45	2.5	3000	41
430619	NDL.Q-50x3-M12	50	M12	34	50	44	3	3000	50
430621	NDL.Q-60x1.5-2-M10	60	M10	34	60	57-56	1.5-2	3000	70
430623	NDL.Q-60x1.5-2-M12	60	M12	34	60	57-56	1.5-2	3000	74

* The max limit static load is the value above which the load applied to the element may cause some plastic material breakage, under particular conditions of use. Obviously, a factor that takes into consideration the importance and the safety level of the specific application must be applied to this value. The values shown in the table refer to the use of the end-cap in combination with a steel tube. The use of an aluminum tube may cause a decrease in the max limit static load equal to 25% due to possible deformations of the tube section under load.