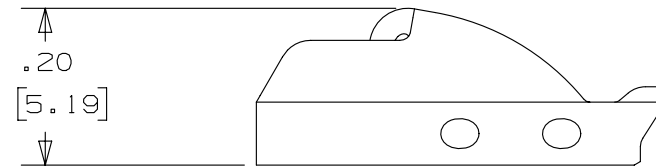
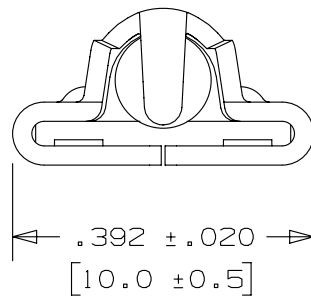
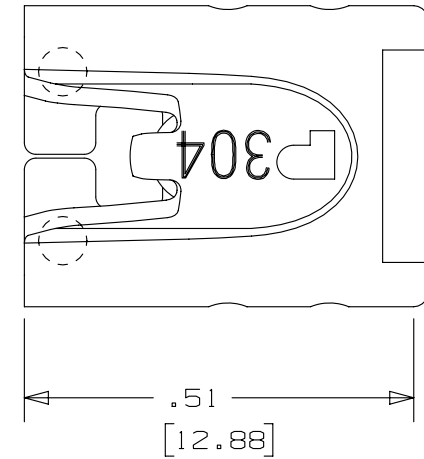


THIS COPY IS PROVIDED ON A RESTRICTED BASIS AND IS NOT TO BE USED IN ANY WAY DETRIMENTAL TO THE INTERESTS OF PANDUIT CORP.

NOTES:

- 1. TO BE USED WITH PANDUIT METAL BANDING MBH-MR & MBH-TLR.
- 2. APPLICATION TOOL: GS4MT, ST2MT, PPTMT, ST3MT^(A), OR HTMT.
- 3. TOOL TENSION SETTING: 4 TO 8 (GS4MT AND PPTMT ONLY)
- 4. DIMENSIONS IN [] ARE MILLIMETERS.
- 5. MINIMUM LOOP TENSILE STRENGTH: 250 LBS (1112 N)^(B)
- 6. TOLERANCES: .X = ±.030 [.762]
 .XX = ±.020 [.508]
 .XXX = ±.010 [.254]
 ANGLES = ±2°



TITLE		METAL TIE HEAD HEAVY PART NUMBER MTHH-C	
CUSTOMER DRAWING			
ITEM REVISION NAME	N41130BS/02	PANDUIT	
DATASET FILE NAME	N41130BS/02		
UNLESS OTHERWISE SPECIFIED, DIMENSIONAL TOLERANCES ARE: IN [mm]		MATERIAL:	
.x ± .1 [2.54]	.xxx ± .005 [.127]	304 STAINLESS STEEL	
.xx ± .01 [.25]	ANGLES ± 5 °	DRAWING NUMBER:	
THIRD ANGLE PROJECTION		N41130BS_DC	
DRAWN BY	DATE	CHK	SCALE
JAMB	DPN	11/02	4:1
SHT 1 OF 1			SIZE
			A

REV	DATE	BY	CHK	APR	DESCRIPTION	ECN
01	10/03	BRH	DPN	JJB	(A) ADDED ST3MT TO APPLICATION TOOL NOTE (B) ADDED TENSILE STRENGTH NOTE	11162
00	11/02	JAMB	DPN	JJB	DRAWING RELEASED	10401