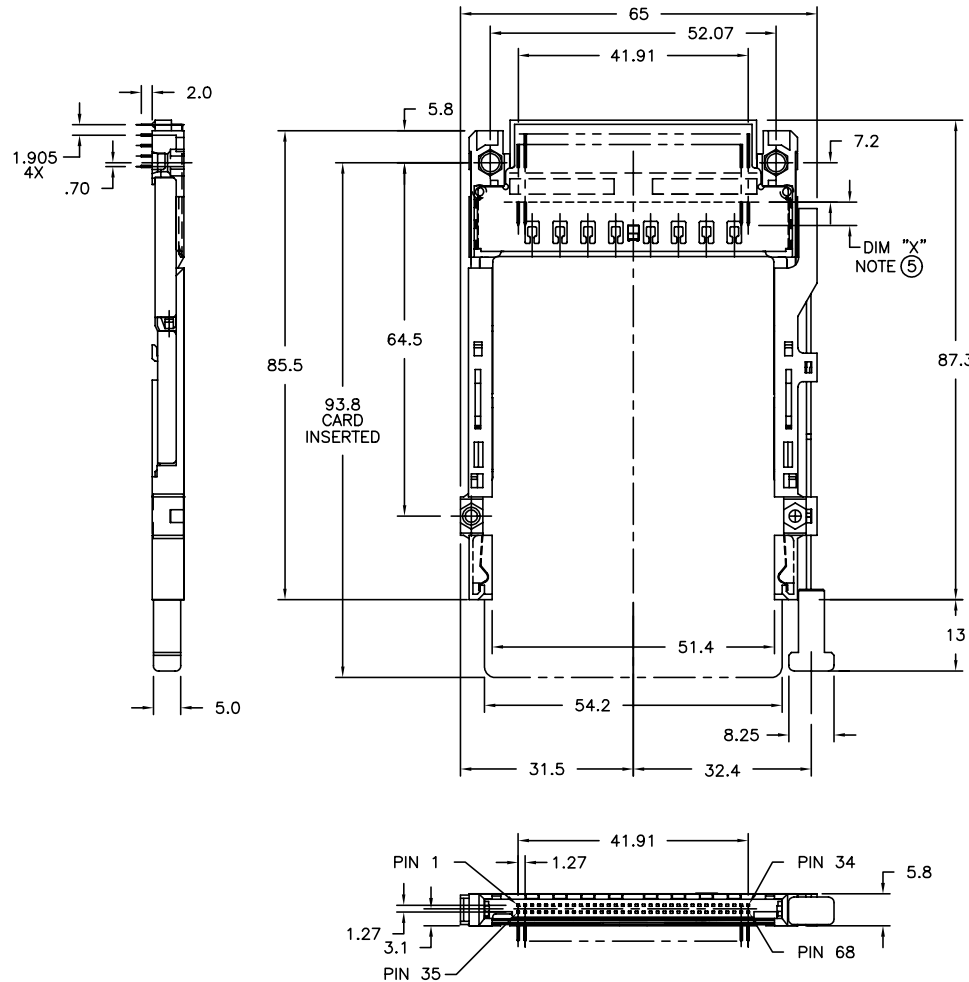
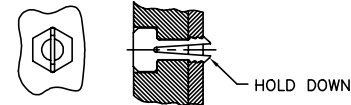


PRODUCT NO.  
72206-000CA/000CALF  
NOTE ⑧



NOTES:

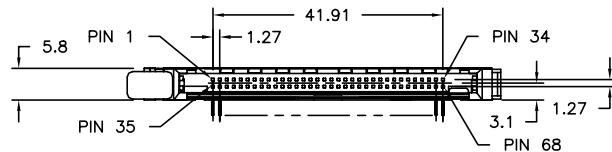
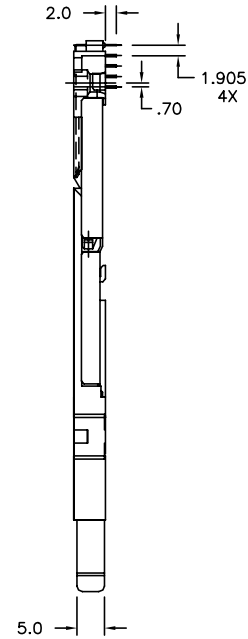
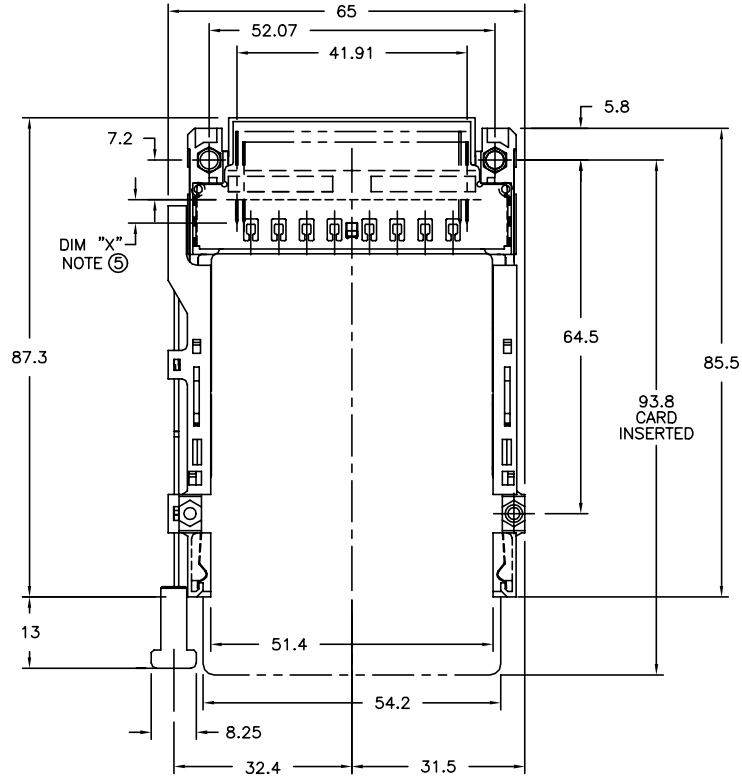
- 1 8mm MIN CARD EJECT.
  - 2 PUSH-ROD TRAVEL: 9.5mm
  - 3 MATERIAL:
    - 3.1 HEADER ASSY:  
PLASTIC HOUSING: HIGH TEMPERATURE THERMOPLASTIC UL94V-0 BLACK - ABOVE PCB  
PIN: PHOSPHOR BRONZE
    - 3.2 EJECT MECHANISM ASSY:  
PLASTIC GUIDE: HIGH TEMPERATURE THERMOPLASTIC UL94V-0 BLACK  
PLASTIC PUSH-ROD BUTTON: HIGH TEMPERATURE THERMOPLASTIC UL94V-0 BLACK  
COVER PLATE, EJECT PLATE, LINK ARM,  
PUSH ROD: STAINLESS STEEL  
EMI CONTACT: PHOSPHOR BRONZE
  - 4 FINISH (PIN)  
UNDER PLATING: 0.5um MIN Ni  
CONTACT AREA: 0.076 um MIN. GOLD  
  
SOLDER TAIL: 2.5umMIN Sn-Pb FOR TIN LEAD OPTION  
2.5umMIN PURE TIN FOR LEAD FREE OPTION
- |           |          |         |                  |
|-----------|----------|---------|------------------|
| ⑤ DIM "X" | 4.25±0.1 | 3.5±0.1 | 5.0±0.1          |
|           | OTHERS   | 36,67   | 1,17,34,35,51,68 |
- 6 RECOMMENDED HOLD DOWN - 2mm SCREWS (95121-001) AND NUTS (92869-001).  
RECOMMENDED SCREW TORQUE: 1.0 TO 1.5 MAX in-lbs. (1.2-1.7 cm-kgs).
  - 7 SEE SHEET 3 FOR PCB LAYOUT INFORMATION.
  - ⑧ ADD "H" TO PART NUMBER FOR OPTIONAL HOLD DOWN (2 PER EJECT MECHANISM).



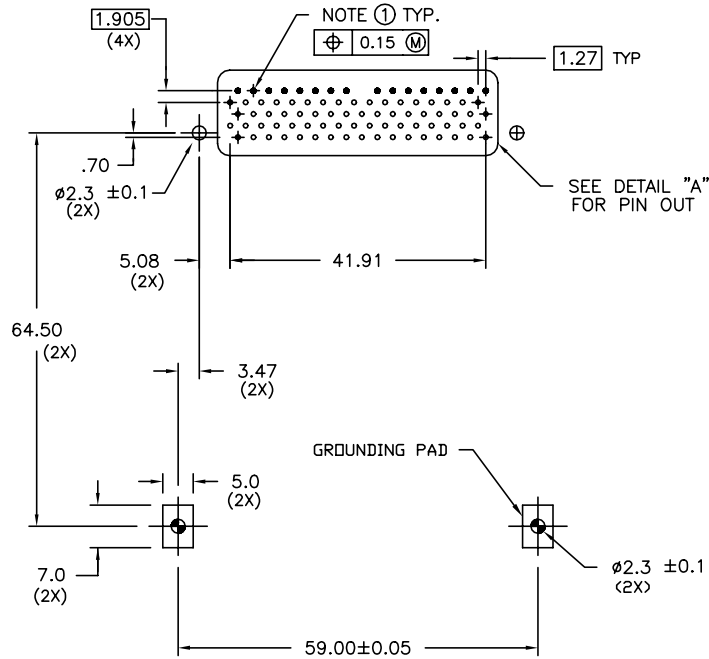
- 9 IF LEAD FREE P/N.THE HOUSING WILL WITHSTAND EXPOSURE TO 260°C PEAK TEMPERATURE FOR 10 SECONDS IN A WAVE SOLDER APPLICATION WITH A 1.00MM MINIMUM THICK CIRCUIT BOARD.
- 10 IF LEAD FREE P/N.THE PRODUCT MEETS EUROPEAN UNION DIRECTIVES AND OTHER COUNTRY REGULATIONS AS DISCRIBED IN GS-22-008
- 11 LEAD FREE P/N PACKAGING MEETS GS-14-920 SPECIFICATION
- 12 PRODUCT SPEC:110-263

mat'l. code		surface <input checked="" type="checkbox"/> ISO1302		tolerance <input checked="" type="checkbox"/> ISO1101 <input checked="" type="checkbox"/> ISO406		projection		product family	
l trechn nodr		date		tolerances unless other		wise specified		MCS	
E	V12164	TFG	8/16/01	angle	0.X±0.3	MM		R/A CARDBUS SINGLE	
F	N05-0054	WB	03/02/05	0°±2'	0.XX±0.13	scale 1:1		DECK ASSEMBLY	
G	BLX-N-011408	ZK	04/02/12		0.XXX±0.051				
				dr	R.GRAPE	4/29/96		dwg no	
				engr	D.BRANN	4/29/96		sheet 1 of 3	
				chr	D.BRANN	4/29/96		72206	
				appd	D.BRANN	4/29/96		A4	
sheet		revising		G		G		type	
index		sheet		1		2		Product Customer Drawing	

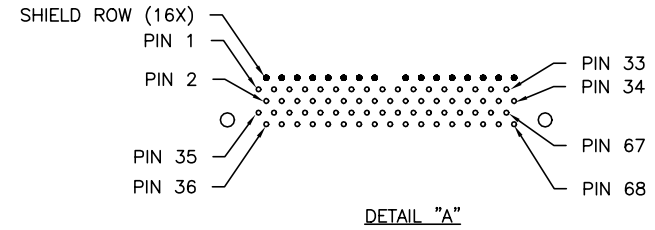
PRODUCT NO.  
72206-100CA/100CALF  
NOTE ③



mat'l. code	surface ISO1302	tolerance ISO1101 ISO406	projection ASME Y14.5	product family MCS
ltr ecn nodr date	tolerances unless otherwise specified		MM	R/A CARDBUS SINGLE DECK ASSEMBLY
g	angle 0°±2'	0.X±0.3 0.XX±0.13 0.XXX±0.051	scale 1:1	dwg no 72206 sheet 2 of 3 size A4
	dr R.GRAPE 4/29/96	engr D.BRANN 4/29/96		type Product Customer Drawing
	chr D.BRANN 4/29/96	appd D.BRANN 4/29/96		
sheet index	revision sheet			



P.C.B. LAYOUT



NOTES:

- ① RECOMMENDED DIAMETER IS Ø1.0. FOR PROCESSES USING PASTE REFLOW, HOLE MAY BE AS SMALL AS Ø0.79.
- 2 ALL TOLERANCES ±0.15 UNLESS NOTED.

mat'l. code		surface ISO1302 ✓		tolerance ISO1101 ISO406		projection MM		product family MCS	
l t r e c n n o d r		date		tolerances unless otherwise specified		scale 1:1		title R/A CARDBUS SINGLE DECK ASSEMBLY	
g		angle		0.X±0.3		MM		dwg no	
		0°±2'		0.XX±0.13				sheet 3 of 3	
				0.XXX±0.051				size A4	
		dr		R.GRAPE 4/29/96				type	
		enr		D.BRANN 4/29/96				Product	
		chr		D.BRANN 4/29/96				Customer	
		appd		D.BRANN 4/29/96				Drawing	
sheet index		revision sheet							