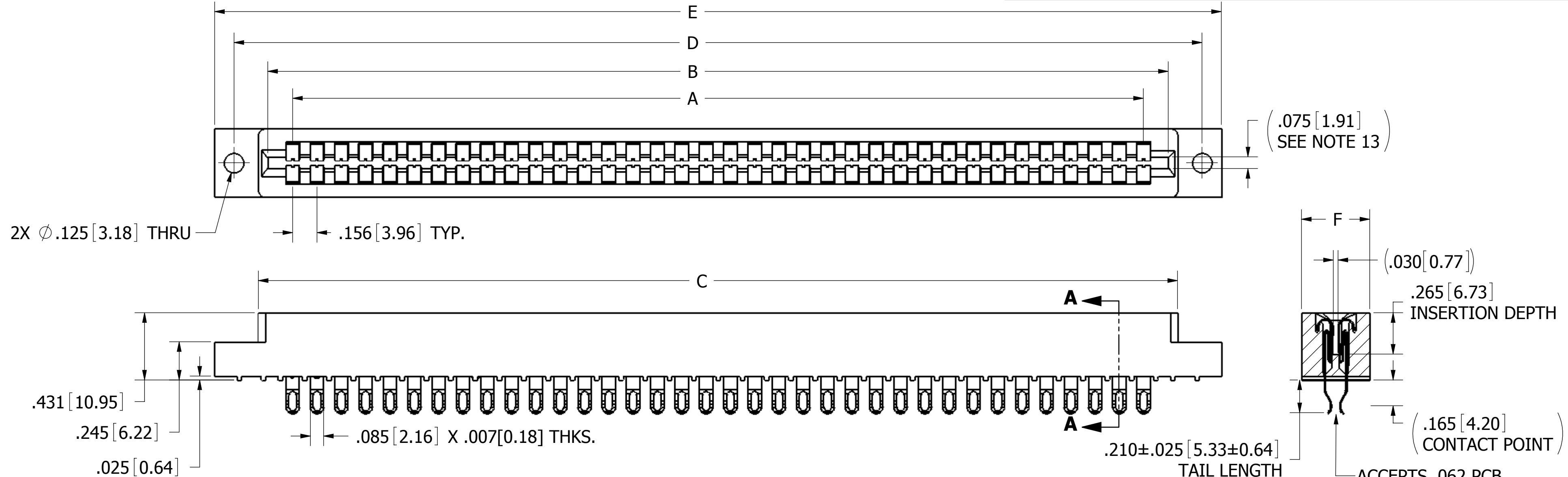
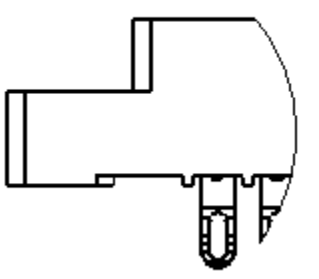


REVISIONS				
REV.	ECO. NO	DESCRIPTION	DATE	BY
A	484	INITIAL RELEASE	12/17/04	MNH
B	605	ADDED TABULATE TABLE	5/2/2005	TT
C	1184	UPDATED TO CURRENT CONFIGURATION	11/3/2006	MV
D	1952	ADD 'M' (PAD STANDOFF) DETAIL. SHOW ADD P/N CODING FOR 'E' MOD CODE	4/22/2009	MNH
E	2570	CORRECT LOCATION FOR "E" DIM & ADD "D" DIM ON S-MTG VIEW, ADD CONTACT MARKING	3/27/2012	JH

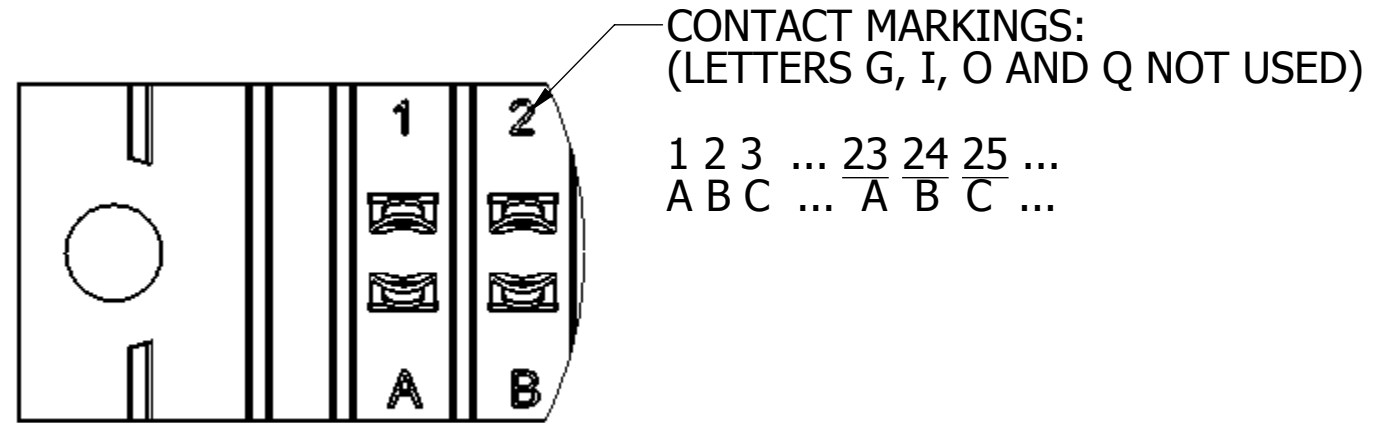


EMPP-1156-__-1(E)G



EMPP-1156-__-1(E)GM

ADD 'M' TO END OF PART NUMBER FOR PADS ON ENDS OF CONNECTOR



- NOTES:
- INSULATOR MATERIAL: PPS
 - CONTACT MATERIAL: SPINODAL
 - PLATING: .000050" MIN NICKEL UNDERPLATE
CONTACT SURFACE: .000030" GOLD
TERMINATION: .000010" GOLD OVERALL
 - OPERATING TEMPERATURE: -65 °C TO +200 °C
 - PROCESSING TEMP: 260 °C FOR 120 SECONDS MAX
 - UL FLAMMABILITY RATING: 94V-0
 - OPERATING VOLTAGE: 950 VAC MINIMUM AT SEA LEVEL
 - CURRENT RATING: 3 AMP PER CONTACT
 - CONTACT RESISTANCE: 30 MILLI OHMS MAX
 - INSULATION RESISTANCE: 5000 MEGA OHMS
 - DURABILITY: 500 CYCLES MIN
 - CONNECTOR IDENTIFICATION: THE PART SHALL BE MARKED WITH A PART NUMBER AND LOT CODE
 - BOARD THICKNESS ACCOMMODATED: $.062 \pm .008 [1.57 \pm 0.20]$
 - INSERTION FORCE: 16 OZ MAX PER CONTACT PAIR WHEN USING A $.062 [1.57]$ TEST BLADE
INTERNAL INSPECTION TO BE PER SULLIN'S WORK INSTRUCTION WI7.3-01
 - WITHDRAWAL FORCE: 1 OZ MIN PER CONTACT PAIR USING $.062 [1.57]$ PCB
 - MODIFICATION: BROWN PPS, CARD EXTENDER

REF: FMM__DSE_ - S1077

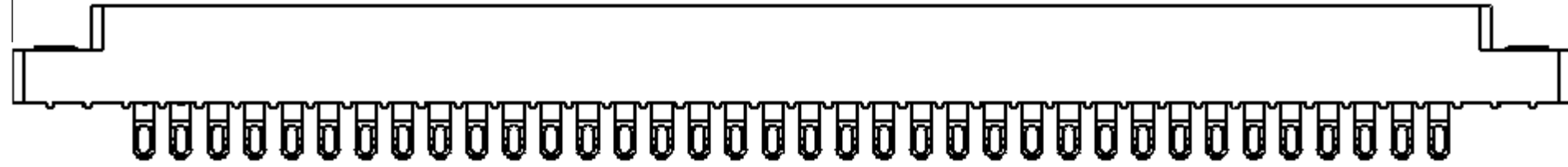
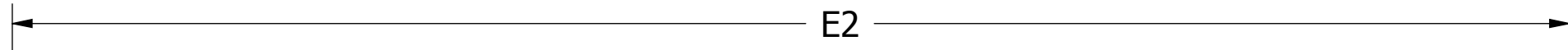
CUSTOMER COPY



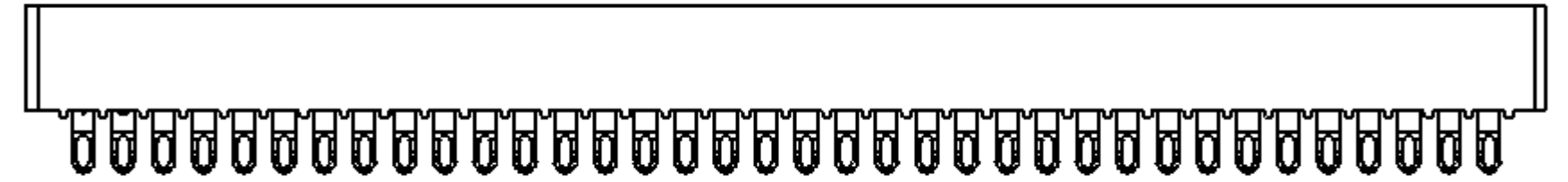
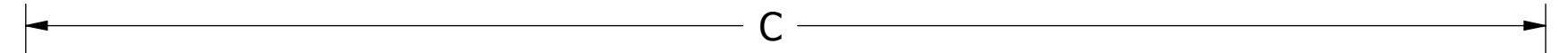
UNLESS OTHERWISE SPECIFIED: DIMENSIONS ARE IN INCHES [MM]		DRAWN	DATE	NAME	
			12/17/2004	MNH	
TOLERANCES:					<small>THE INFORMATION HEREIN CONTAINS PROPRIETARY INFORMATION OF SULLINS ELECTRONICS AND IS NOT TO BE REPRODUCED, USED OR DISCLOSED TO OTHERS FOR ANY PURPOSE EXCEPT AS SPECIFICALLY AUTHORIZED IN WRITING BY AN OFFICER OF SULLINS ELECTRONICS.</small>
ANGULAR: $\pm 1^\circ$					
DECIMALS .XX = $\pm .02 [.5]$.XXX = $\pm .005 [.13]$.XXXX = $\pm .0005 [.013]$					
TITLE					EDGE CARD, .156 CC
PART NUMBER					EMPP-1156-__-DPE-__(E) G_
SIZE	CAGE CODE	DWG. NO.		REV	
C	54453	C10373		E	
SCALE: 2:1				SHEET 1 OF 3	



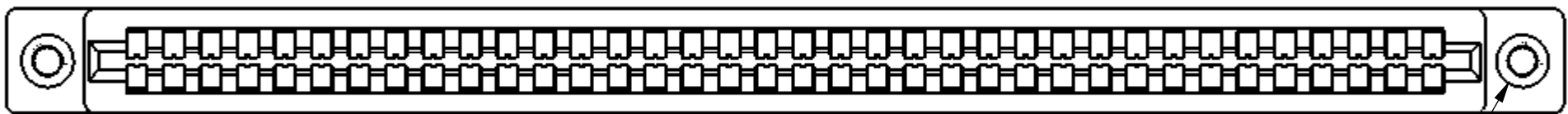
2X #4-40
THREADED INSERT



EMPP-1156-__-2(E)G



EMPP-1156-__-4(E)G



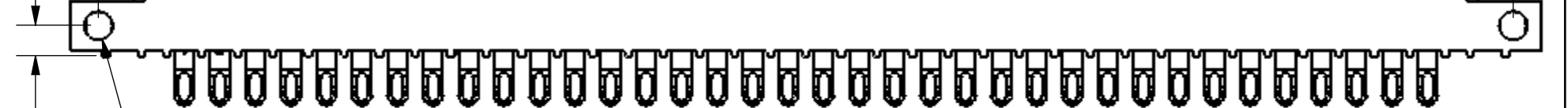
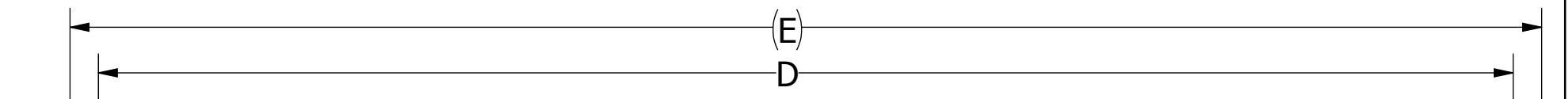
2X ϕ .116[2.95]
CLEARANCE FOR #4 SCREW



FLOATING BOBBIN

(.280 [7.11])

EMPP-1156-__-3(E)G

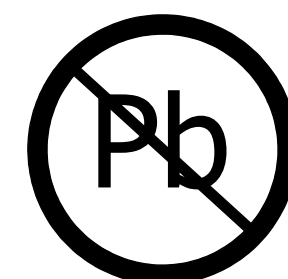


2X ϕ .125[3.18]

.135[3.43]

EMPP-1156-__-8(E)G

CUSTOMER COPY



RoHS COMPLIANT

UNLESS OTHERWISE SPECIFIED:
DIMENSIONS ARE IN INCHES [MM]

TOLERANCES:

ANGULAR: $\pm 1^\circ$

DECIMALS

.XX = $\pm .02$ [.5]

.XXX = $\pm .005$ [.13]

.XXXX = $\pm .0005$ [.013]

DRAWN DATE NAME

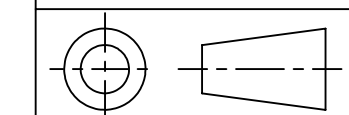
12/17/2004 MNH



TITLE
EDGE CARD, .156 CC

PART NUMBER
EMPP-1156-__-DPE-__G

THE INFORMATION HEREIN CONTAINS
PROPRIETARY INFORMATION OF
SULLINS ELECTRONICS AND IS NOT
TO BE REPRODUCED, USED OR
DISCLOSED TO OTHERS FOR ANY
PURPOSE EXCEPT AS SPECIFICALLY
AUTHORIZED IN WRITING BY AN
OFFICER OF SULLINS ELECTRONICS.

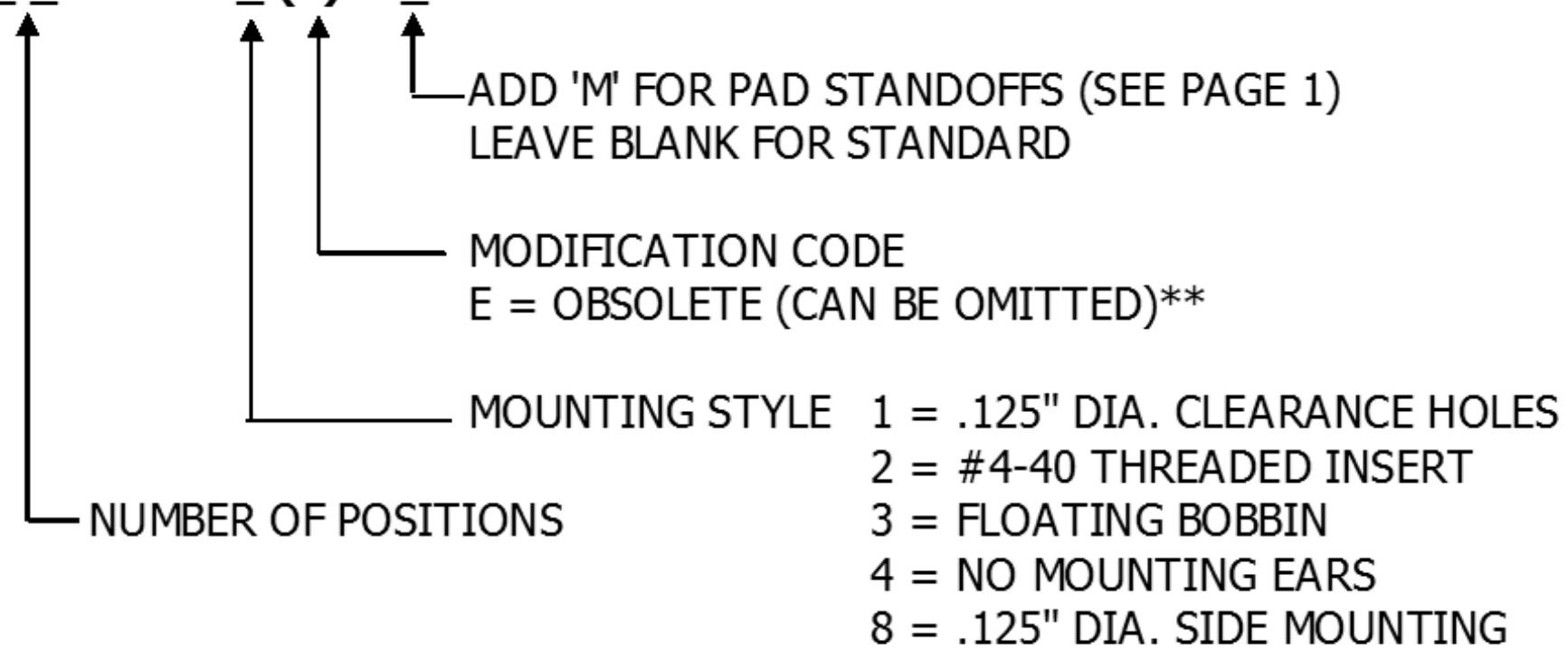


SIZE	CAGE CODE	DWG. NO.	REV
C	54453	C10373	E
SCALE: 2:1		SHEET 2 OF 3	

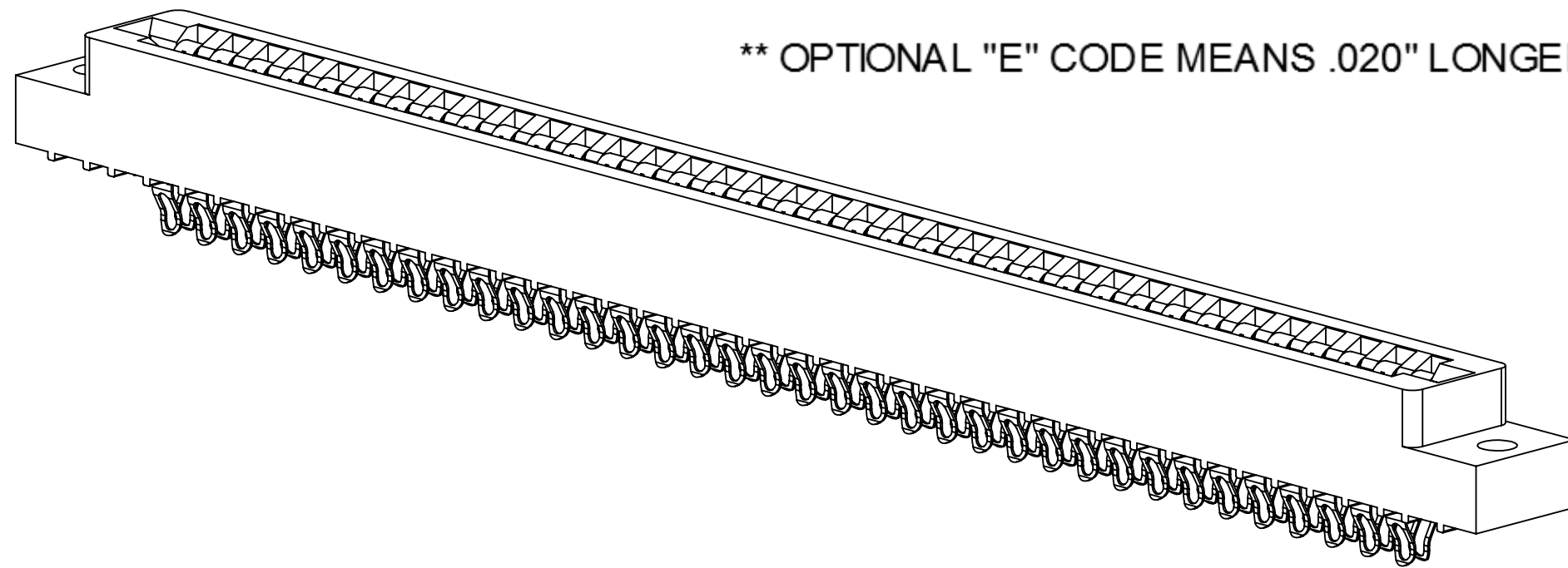
PART NUMBER	NO. OF POS.	INCHES						MILIMETERS							
		A±.008	B±.008	C±.015	D±.010	E±.020	E2±.020	F+.005/- .015	A±A0.20	B±0.20	C±0.38	D±0.25	E±0.51	E2±0.51	F+ 0.13/ -0.38
EMPP-1156-02-DPE-4 (E) G_	2	0.156	0.476	0.596	MOUNTING STYLE '4' ONLY			0.325	3.96	12.09	15.14	MOUNTING STYLE '4' ONLY			8.26
EMPP-1156-03-DPE-4 (E) G_	3	0.312	0.632	0.752					7.92	16.05	19.10				
EMPP-1156-04-DPE- (E) G_	4	0.468	0.788	0.908					11.89	20.02	23.06				
EMPP-1156-06-DPE- (E) G_	6	0.780	1.100	1.220	1.533	1.782	1.882		19.81	27.94	30.99	38.94	45.26	47.80	
EMPP-1156-08-DPE- (E) G_	8	1.092	1.412	1.532	1.845	2.094	2.194		27.74	35.86	38.91	46.86	53.19	55.73	
EMPP-1156-10-DPE- (E) G_	10	1.404	1.724	1.844	2.157	2.406	2.506		35.66	43.79	46.84	54.79	61.11	63.65	
EMPP-1156-11-DPE- (E) G_	11	1.560	1.880	2.000	2.313	2.562	2.662		39.62	47.75	50.80	58.75	65.07	67.61	
EMPP-1156-12-DPE- (E) G_	12	1.716	2.036	2.156	2.469	2.718	2.818		43.59	51.71	54.76	62.71	69.04	71.58	
EMPP-1156-15-DPE- (E) G_	15	2.184	2.504	2.624	2.937	3.186	3.286		55.47	63.60	66.65	74.60	80.92	83.46	
EMPP-1156-18-DPE- (E) G_	18	2.652	2.972	3.092	3.405	3.654	3.754		67.36	75.49	78.54	86.49	92.81	95.35	
EMPP-1156-22-DPE- (E) G_	22	3.276	3.596	3.716	4.029	4.278	4.378		83.21	91.34	94.39	102.34	108.66	111.20	
EMPP-1156-24-DPE- (E) G_	24	3.588	3.908	4.028	4.341	4.590	4.690		91.14	99.26	102.31	110.26	116.59	119.13	
EMPP-1156-25-DPE- (E) G_	25	3.744	4.064	4.184	4.497	4.746	4.846	95.10	103.23	106.27	114.22	120.55	123.09		
EMPP-1156-28-DPE- (E) G_	28	4.212	4.532	4.652	4.965	5.214	5.314	106.98	115.11	118.16	126.11	132.44	134.98		
EMPP-1156-36-DPE- (E) G_	36	5.460	5.780	5.900	6.213	6.462	6.562	0.438	138.68	146.81	149.86	157.81	164.13	166.67	
EMPP-1156-43-DPE- (E) G_	43	6.552	6.872	6.992	7.305	7.554	7.654	.500	166.42	174.55	177.60	185.55	191.87	194.41	
EMPP-1156-44-DPE- (E) G_	44	6.708	7.028	7.148	7.461	7.710	7.810		170.38	178.51	181.56	189.51	195.83	198.37	

PART NUMBER CODING

EMPP- 1156 - _ - DPE - _ (E) G _



** OPTIONAL "E" CODE MEANS .020" LONGER CARD SLOT, NOW STANDARD, SEE DIMENSION "B" IN THE DIMENSION TABLE



CUSTOMER COPY



UNLESS OTHERWISE SPECIFIED: DIMENSIONS ARE IN INCHES [MM]		DRAWN	DATE	NAME	
TOLERANCES: ANGULAR: ± 1° DECIMALS .XX = ± .02 [.5] .XXX = ± .005 [.13] .XXXX = ± .0005 [.013]		12/17/2004	MNH		
THE INFORMATION HEREIN CONTAINS PROPRIETARY INFORMATION OF SULLINS ELECTRONICS AND IS NOT TO BE REPRODUCED, USED OR DISCLOSED TO OTHERS FOR ANY PURPOSE EXCEPT AS SPECIFICALLY AUTHORIZED IN WRITING BY AN OFFICER OF SULLINS ELECTRONICS.					TITLE EDGECARD, .156 CC
PART NUMBER					SIZE C
EMPP-1156-__-DPE-__(E) G_			CAGE CODE 54453	DWG. NO. C10373	REV E
SCALE: 1:1					SHEET 3 OF 3