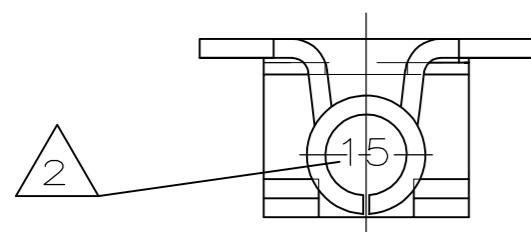
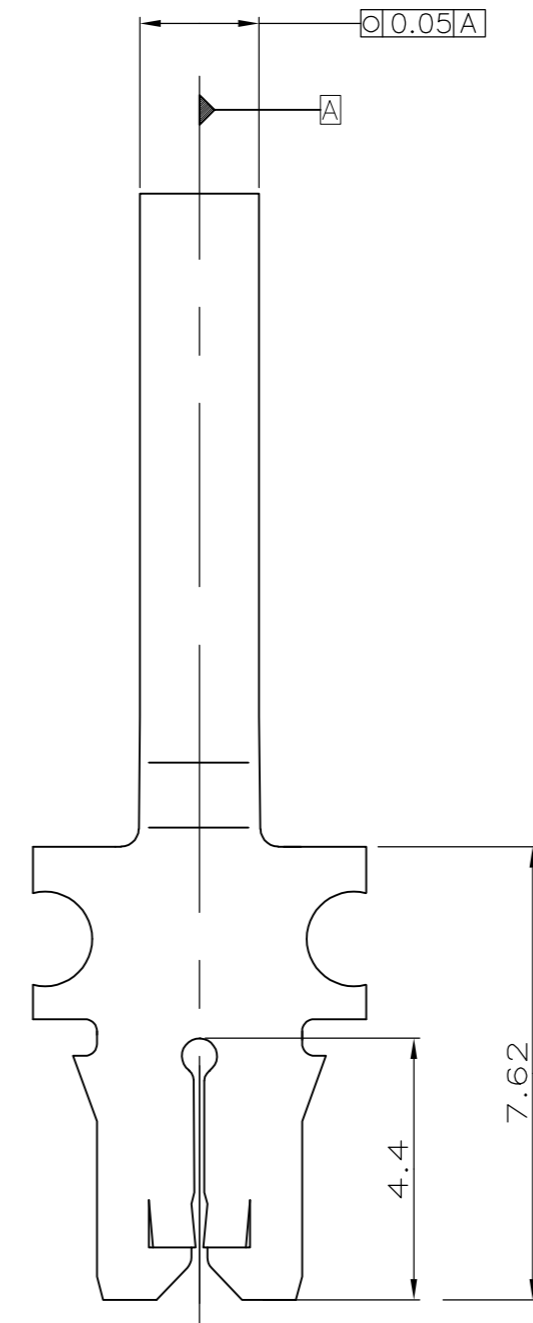
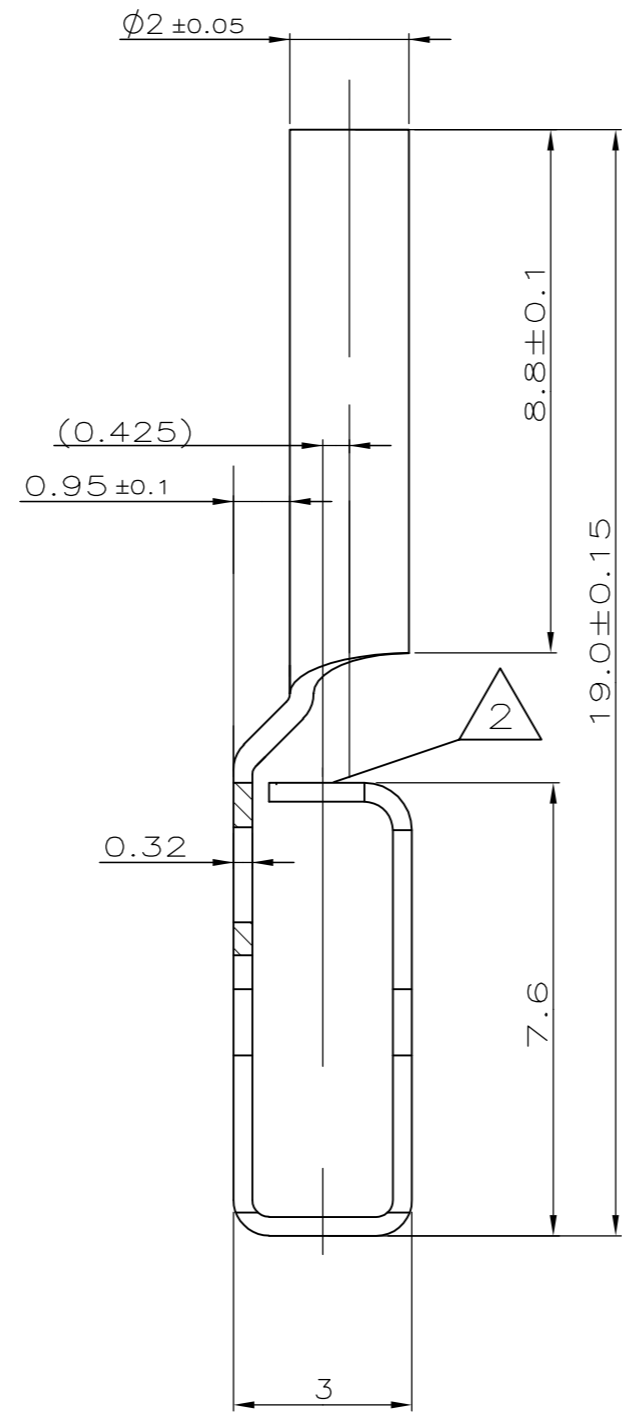
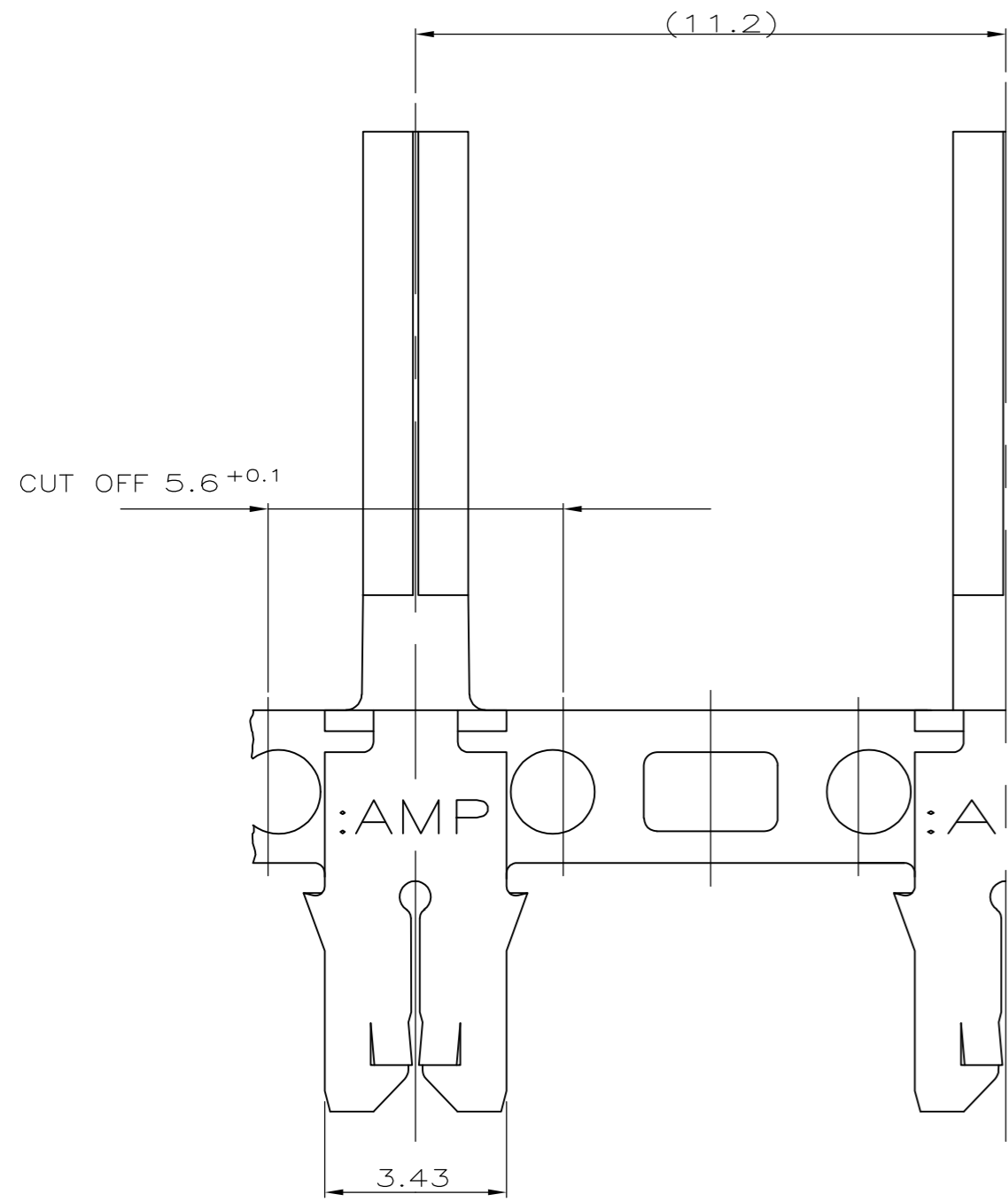


THIS DRAWING IS UNPUBLISHED. RELEASED FOR PUBLICATION  
 © COPYRIGHT - By - ALL RIGHTS RESERVED.

LOC		DIST		REVISIONS			
P	LTR	DESCRIPTION		DATE	DWN	APVD	
IR	-	A	INITIAL RELEASE	08NOV2012	PKS	RRP	



3 Kontakt-Kammer nach Zeichnung. 411-18512  
 REFER CONTACT CAVITY DWG. 411-18512

△ Kennziffer für Lackdrahtbereich (15)  
 IDENTIFIKATION NO. FOR MAGNET WIRE RANGE (15)

1 Geeignet für Kupferlackdraht (einfach) Ø0.57-0.81mm  
 SLOT ACCEPTS SINGLE COPPER MAGNET WIRE AWG 23-20

PRE-TINNED	BRASS	2178472-1
FINISH	MATERIAL	P/N

THIS DRAWING IS A CONTROLLED DOCUMENT.		DWN	07NOV2012	 TE Connectivity
DIMENSIONS: mm		CHK	08NOV2012	
TOLERANCES UNLESS OTHERWISE SPECIFIED:		APVD	08NOV2012	
0 PLC ± 0.2 1 PLC ± 0.2 2 PLC ± 0.2 3 PLC ± 0.2 4 PLC ± - ANGLES ± 30		PRODUCT SPEC	NAME	
MATERIAL SEE TABLE		FINISH SEE TABLE		MAG MATE PIN-KONTAKT MAG MATE STIFT-KONTAKT
WEIGHT		-		SIZE
CUSTOMER DRAWING		SCALE 10:1		CAGE CODE
SEE TABLE		SEE TABLE		DRAWING NO
-		-		RESTRICTED TO
-		-		REV
-		-		A