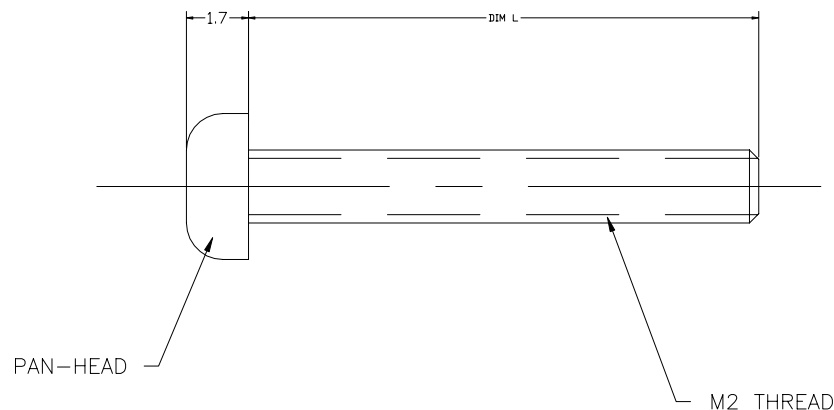
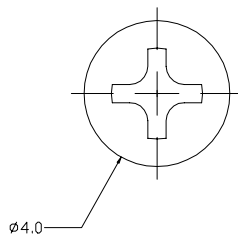




PRODUCT NO.	DIM L	APPLICATION ④	STAND-OFF HEIGHT (mm)
95121-001	6	SINGLE DECK	0
95121-002	12	SINGLE DECK DOUBLE DECK	5 0
95121-003	14	DOUBLE DECK	2, 2.2
95121-004	8	SINGLE DECK	2, 2.2
95121-005	10	SINGLE DECK	4, 4.3
95121-006	16	DOUBLE DECK	4, 4.3
95121-007	18	DOUBLE DECK	5
95121-008	20	DOUBLE DECK	6



NOTES:

- ① MATERIAL: STEEL
- 2 PLATING: NICKEL OR ZINC
- 3 PACKAGING: BAGS OF 1,000
- ④ BASED ON .062in (1.57mm) PCB THICKNESS.
- 5 USE WITH HEX NUT 92869-001
- 6 THE P/N WITH "LF" SUFFIX IS LEAD FREE PART NUMBER
- 7 IF LEAD FREE P/N.THE PRODUCT MEETS EUROPEAN UNION DIRECTIVES AND OTHER COUNTRY REGULATIONS AS DESCRIBED IN GS-22-008
- 8 LEAD FREE P/N PACKAGING MEETS GS-14-920 SPECIFICATION

mat'l. code NOTE 1				tolerances unless otherwise specified		CUSTOMER COPY		Electronics www.fciconnect.com	
ltr	ecn no	dr	date	linear	.X±.3		projection	title M2 THREADED SCREW	
D	V12164	TFG	8/17/01		.XX±.13				
E	V20092	RGD	1/15/02	angles	.XXX±.051		scale 5:1	product family MCS size dwg no A4 95121	
F	N07-0109	DT	4/26/07		0° ±2'				
sheet index		revision sheet	G 1	dr	D.SHEAFFER	11/1/94	MM	code	-
				enr	D.BRANN	11/1/94		sheet	1 of 1
				chr	D.BRANN	11/1/94			
				appd	D.BRANN	11/1/94			
								cage code	