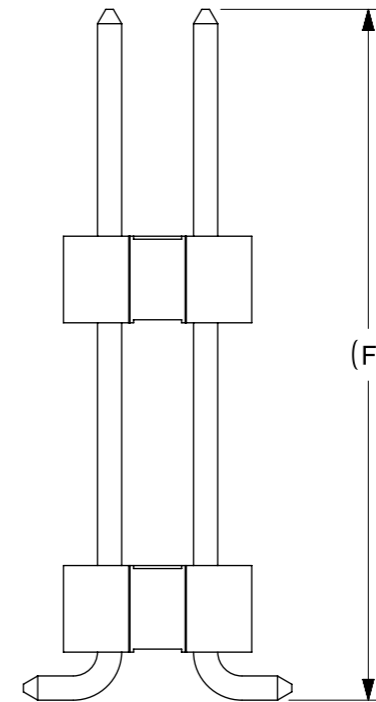


CONNECTOR WITH PEG

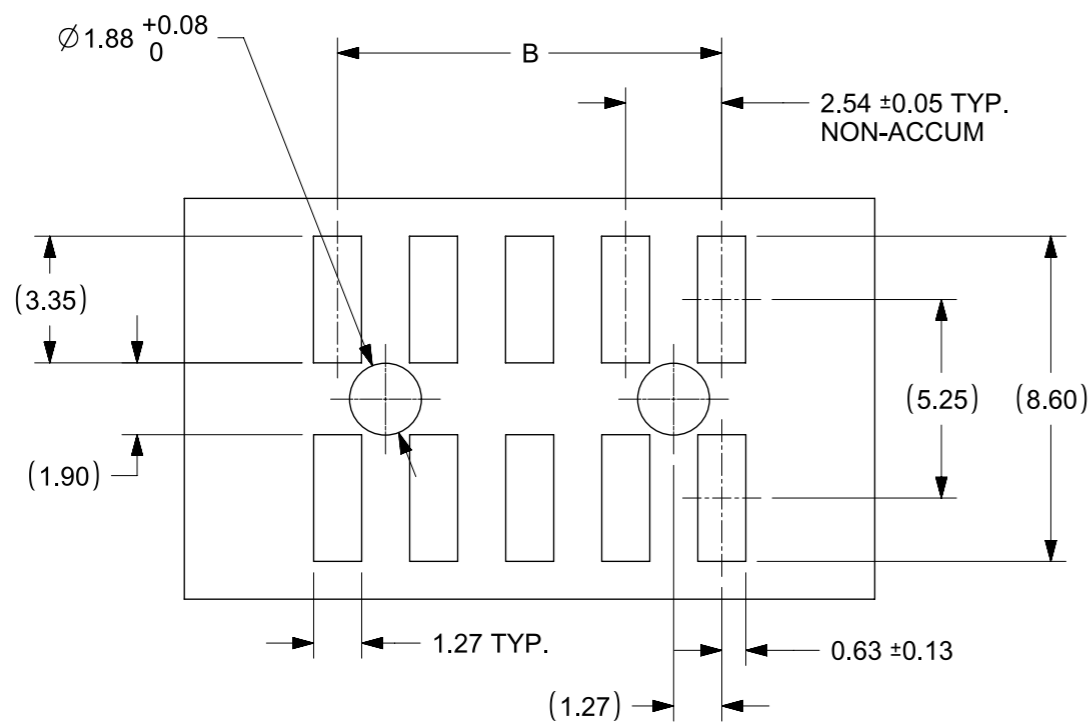


CONNECTOR WITHOUT PEG

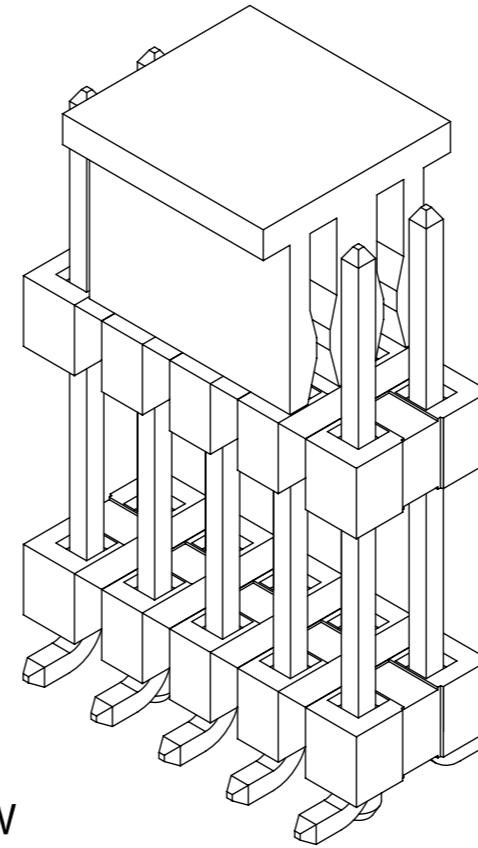
CKT SIZE	DIMENSION		
	A	B	C
04	5.08	2.54	-
06	7.62	5.08	-
08	10.16	7.62	5.08
10	12.70	10.16	7.62
12	15.24	12.70	10.16
14	17.78	15.24	12.70
16	20.32	17.78	15.24
18	22.86	20.32	17.78
20	25.40	22.86	20.32
22	27.94	25.40	22.86
24	30.48	27.94	25.40
26	33.02	30.48	27.94
28	35.56	33.02	30.48
30	38.10	35.56	33.02
32	40.64	38.10	35.56
34	43.18	40.64	38.10
36	45.72	43.18	40.64
38	48.26	45.72	43.18
40	50.80	48.26	45.72

THIS DRAWING CONTAINS INFORMATION THAT IS PROPRIETARY TO MOLEX ELECTRONIC TECHNOLOGIES, LLC AND SHOULD NOT BE USED WITHOUT WRITTEN PERMISSION

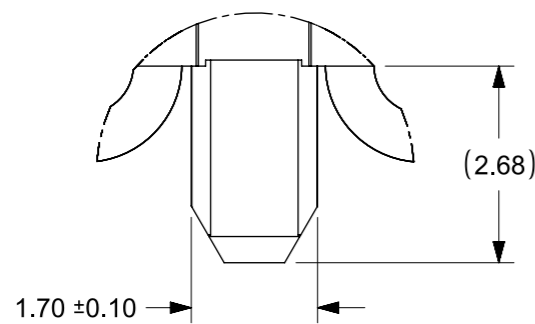
DIMENSION UNITS	SCALE	CURRENT REV DESC: REMOVED OBSOLETE PART NUMBERS AS PER PCN#512673.	
MM	NTS		
GENERAL TOLERANCES (UNLESS SPECIFIED)			
	MM	INCH	<b>CUSTOM HEADER</b> CGRID,DUAL ROW HDR, DUAL BODY, SMT W/PEGS, VERT.  <b>PRODUCT CUSTOMER DRAWING</b>
4 PLACES	±	±	
3 PLACES	±	±	
2 PLACES	± 0.2	±	
1 PLACE	±	±	
0 PLACES	±	±	EC NO: 747661 DRWN: LIKITV CHK'D: GGA APPR: GGA 2023/03/03 2023/05/03 2023/05/03
ANGULAR TOL	± 3.0°		INITIAL REVISION: DRWN: SKLIM01 APPR: PATEY 2006/06/29 2006/07/07
DRAFT WHERE APPLICABLE MUST REMAIN WITHIN DIMENSIONS		THIRD ANGLE PROJECTION	DOCUMENT NUMBER <b>SD-87939-017</b>
		DRAWING	DOC TYPE
		A3-SIZE	PSD
		SERIES	DOC PART
		87939	000
		MATERIAL NUMBER	REVISION
		SEE TABLE	A14
		CUSTOMER	SHEET NUMBER
		GENERAL MARKET	1 OF 4



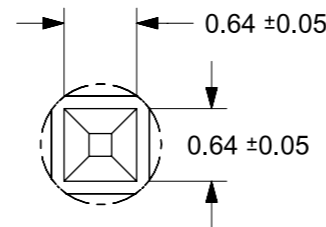
RECOMMENDED PCB LAYOUT: SOLDER SIDE



ISO VIEW  
CONNECTOR WITH CAP



DETAIL1



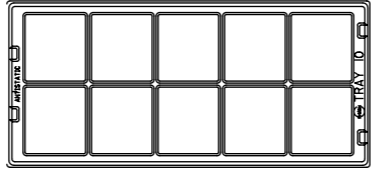
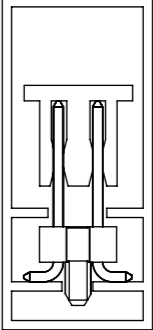
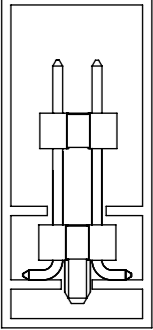
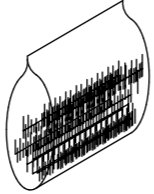
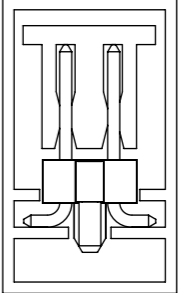
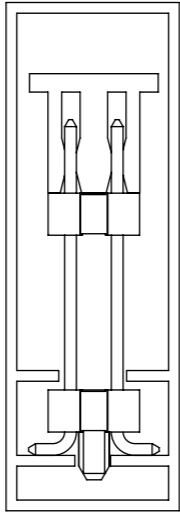
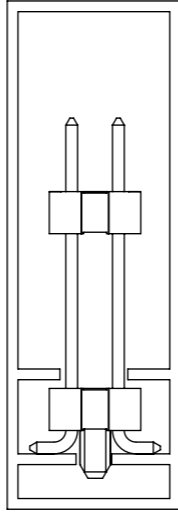
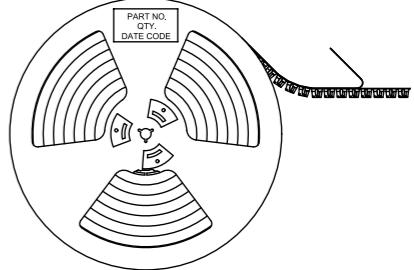
DETAIL2

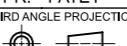
NOTES

1. MATERIAL:
  - HSG: LCP, GLASS-FILLED, UL94V-0, COLOR: BLACK
  - CAP: NYLON, GLASS-FILLED, UL94V-0, COLOR: BLACK
  - PIN: 0.64MM SQ, COPPER ALLOY
2. PLATING TYPE:
  - (1) GOLD FLASH OVER  
1.25µm MIN. NICKEL OVERALL
  - (2) 0.05µm MIN. GOLD PLATE ON CONTACT AND  
2.50µm MIN. TIN ON SOLDER TAIL OVER  
1.25µm MIN. NICKEL OVERALL.
  - (3) 0.38µm MIN. GOLD PLATE ON CONTACT AND  
2.00µm MIN. TIN ON SOLDER TAIL OVER  
1.25µm MIN. NICKEL OVERALL.
  - (4) 0.75µm MIN. GOLD PLATE ON CONTACT AND  
2.00µm MIN. TIN ON SOLDER TAIL OVER  
1.25µm MIN. NICKEL OVERALL.
  - (5) 2.50µm MIN. TIN OVERALL  
1.25µm MIN. NICKEL OVERALL
3. PACKAGING TYPE: SEE TABLE
4. PCB THICKNESS 1.60+/-0.10mm
5. PRODUCT SPECIFICATION: PS-87920-019
6. WAFER TO BE FLAT WITHIN 0.003 mm/mm
7. BEND DEPRESSION IS ACCEPTED SO LONG AS IT DOES NOT AFFECT THE OVERALL COPLANARITY OF TAIL
8. COPLANARITY IS TO BE MEASURED BY RESTING THE SOLDER TAIL ON A FLAT SURFACE
9. CAP LOCATION IS CENTERED ALONG THE MATING ENDS AS SHOWN. TOP SURFACE OF CAP TO BE FLAT FOR THE PURPOSE OF PICK & PLACE BY VACUUM SUCTION NOZZLE
10. IRREGULAR CIRCUIT CUTOFF WITHIN BREAKAWAY SECTION IS PERMISSIBLE. CUTTING OR CHIPPING OF THE MAIN BODY IS NOT ACCEPTABLE
11. PARTS ARE NOT STACKABLE ON 2.54 CENTER
12. THE ABOVE CKT 10 IS FOR ILLUSTRATION PURPOSE ONLY
13. TUBE LENGTH IS 560MM PER STANDARD
14. PACKAGING SPECIFICATION: PLS REFER TO SHEET 3

THIS DRAWING CONTAINS INFORMATION THAT IS PROPRIETARY TO MOLEX ELECTRONIC TECHNOLOGIES, LLC AND SHOULD NOT BE USED WITHOUT WRITTEN PERMISSION									
DIMENSION UNITS		SCALE		CURRENT REV DESC: REMOVED OBSOLETE PART NUMBERS AS PER PCN#512673.					
MM		NTS							
GENERAL TOLERANCES (UNLESS SPECIFIED)				EC NO: 747661		2023/03/03		CUSTOM HEADER CGRID, DUAL ROW HDR, DUAL BODY, SMT W/PEGS, VERT.	
				DRWN: LIKITV		2023/05/03			
				CHK'D: GGA		2023/05/03		PRODUCT CUSTOMER DRAWING	
				APPR: GGA		2023/05/03			
				INITIAL REVISION:				DOCUMENT NUMBER <b>SD-87939-017</b>	
				DRWN: SKLIM01		2006/06/29			
				APPR: PATEY		2006/07/07		DOC PART 000	
				ANGULAR TOL ± 3.0°				REVISION A14	
DRAFT WHERE APPLICABLE MUST REMAIN WITHIN DIMENSIONS				THIRD ANGLE PROJECTION		DRAWING A3-SIZE		MATERIAL NUMBER SEE TABLE	
						SERIES 87939		CUSTOMER GENERAL MARKET	
								SHEET NUMBER 2 OF 4	

# PACKAGING SPECIFICATION OVERVIEW

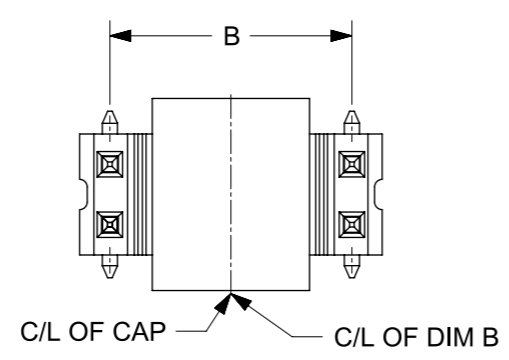
ITEM	PACKAGING TYPE	PACKAGING SPECIFICATION	RECOMMENDED LOADED ASSY HEIGHT	PART PACKED IN PACKAGING ORIENTATION (FOR REF. USE ONLY)	ITEM	PACKAGING TYPE	PACKAGING SPECIFICATION	RECOMMENDED LOADED ASSY HEIGHT	PART PACKED IN PACKAGING ORIENTATION (FOR REF. USE ONLY)
1	TRAY	PK-89990-489	DIM G/F= 60.0MM MAX.		4	TUBE	PK-89990-507	DIM G/F= < 16.0MM	 
2	BULK	PK-89990-491	-		5	TUBE	PK-89990-478	DIM G/F= 10.7MM MAX.	 <p>ONLY PACKED HEADER WITH CAP IN TUBE</p>
3	TUBE	PK-89990-508	DIM G/F= 16.1~23.0MM	  <p>HEADER WITH CAP IN TUBE      HEADER WITHOUT CAP IN TUBE</p>	6	TAPE & REEL	PK-89990-486 (REEL Ø: 330.0 MAX.) OR PK-87898-400	DIM G/F= 15.0MM MAX.	

THIS DRAWING CONTAINS INFORMATION THAT IS PROPRIETARY TO MOLEX ELECTRONIC TECHNOLOGIES, LLC AND SHOULD NOT BE USED WITHOUT WRITTEN PERMISSION									
DIMENSION UNITS	SCALE	<div style="font-size: 24px; font-weight: bold; margin-bottom: 5px;">molex</div> <p style="font-size: 10px; margin: 0;">CUSTOM HEADER CGRID, DUAL ROW HDR, DUAL BODY, SMT W/PEGS, VERT.</p> <p style="font-size: 10px; margin: 0;">PRODUCT CUSTOMER DRAWING</p>							
MM	NTS								
GENERAL TOLERANCES (UNLESS SPECIFIED)		CURRENT REV DESC: REMOVED OBSOLETE PART NUMBERS AS PER PCN#512673.		EC NO: 747661		2023/03/03		DOC TYPE	
				DRWN: LIKITV		2023/05/03		DOC PART	
				CHK'D: GGA		2023/05/03		REVISION	
				APPR: GGA		2023/05/03		SD-87939-017	
				INITIAL REVISION:		2006/06/29		PSD 000 A14	
				DRWN: SKLIM01		2006/07/07		DOCUMENT NUMBER	
				APPR: PATEY		2006/07/07		DOC PART	
				ANGULAR TOL ± 3.0°				REVISION	
DRAFT WHERE APPLICABLE MUST REMAIN WITHIN DIMENSIONS		THIRD ANGLE PROJECTION		DRAWING		SERIES		MATERIAL NUMBER	
				A3-SIZE		87939		CUSTOMER	
								GENERAL MARKET	
								SEE TABLE	
								SHEET NUMBER	
								3 OF 4	

PART NUMBER IN PACKAGING OPTION							CKT SIZE	PEG	PLATE OPT.	PK SPEC.	DIMENSION					
TRAY PACKED WITH CAP	TRAY PACKED WITHOUT CAP	TUBE WITH CAP	TUBE WITHOUT CAP	TAPE & REEL WITH CAP	BULK PACKED WITH CAP	BULK PACKED WITHOUT CAP					G	F	MATING END	STACKER HEIGHT	E	J
													M	H		
-	87939-0805	-	-	-	-	-	8	N	5	1	-	20.80	5.10	14.43	1.27	2.22
-	-	-	-	87939-1002	-	-	10	Y	4	6	21.50	20.00	10.00	10.00	1.20	2.33
-	-	-	-	-	-	-	12	Y	4	6	21.50	20.00	10.00	10.00	1.20	2.33
-	-	-	87939-2000	-	-	-	20	Y	5	3	-	20.00	4.65	15.35	1.27	2.28
-	-	-	-	-	-	-	24	Y	4	6	21.50	20.00	10.00	10.00	1.20	2.33
-	-	-	-	-	-	-	28	N	5	1	-	16.89	3.68	13.21	1.27	2.28
-	-	-	-	-	-	-	28	N	5	1	-	16.89	3.68	13.21	1.27	2.28
-	-	-	-	-	-	-	40	N	3	4	-	14.40	5.90	8.50	1.27	2.22
-	-	-	-	-	-	-	40	Y	4	1	-	14.40	8.00	6.40	1.27	2.28

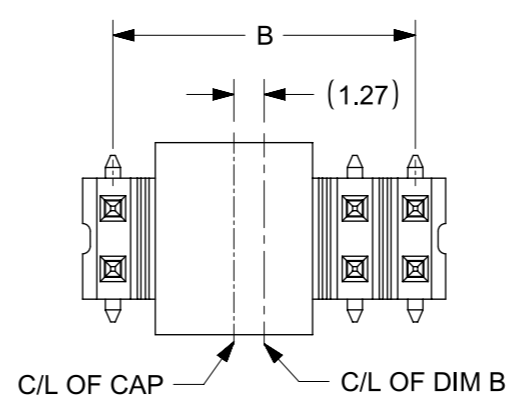
CAP POSITION ILLUSTRATION FOR REFERENCE

FOR ILLUSTRATION 10CKT AS SHOWN



C/L OF DIM B = C/L OF CAP  
FOR ODD CKT COLUMN

FOR ILLUSTRATION 12CKT AS SHOWN



C/L OF DIM B IS OFFSET WITH C/L OF CAP  
FOR EVEN CKT COLUMN

THIS DRAWING CONTAINS INFORMATION THAT IS PROPRIETARY TO MOLEX ELECTRONIC TECHNOLOGIES, LLC AND SHOULD NOT BE USED WITHOUT WRITTEN PERMISSION											
DIMENSION UNITS		SCALE		CURRENT REV DESC: REMOVED OBSOLETE PART NUMBERS AS PER PCN#512673.							
MM		NTS		<p>CUSTOM HEADER CGRID,DUAL ROW HDR, DUAL BODY, SMT W/PEGS, VERT.</p>							
GENERAL TOLERANCES (UNLESS SPECIFIED)											
		MM		INCH		EC NO: 747661		2023/03/03		DOC TYPE	
4 PLACES		±		±		DRWN: LIKITV		2023/05/03		DOC PART	
3 PLACES		±		±		CHK'D: GGA		2023/05/03		REVISION	
2 PLACES		± 0.2		±		APPR: GGA		2023/05/03		SD-87939-017	
1 PLACE		±		±		INITIAL REVISION:		2006/06/29		PSD 000 A14	
0 PLACES		±		±		DRWN: SKLIM01		2006/07/07		SEE TABLE	
ANGULAR TOL		± 3.0°				APPR: PATEY				GENERAL MARKET	
DRAFT WHERE APPLICABLE MUST REMAIN WITHIN DIMENSIONS				THIRD ANGLE PROJECTION		DRAWING		SERIES		SHEET NUMBER	
						A3-SIZE		87939		4 OF 4	