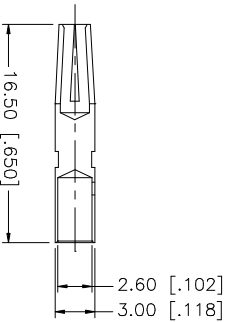
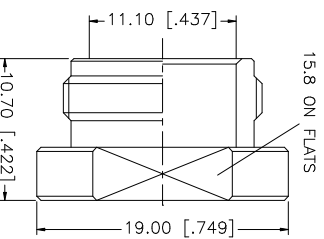
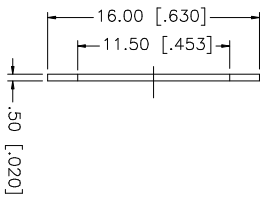
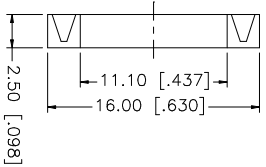
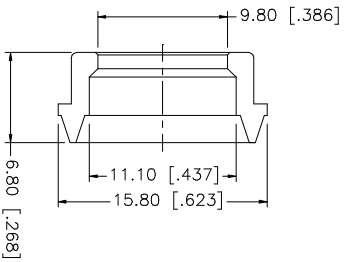
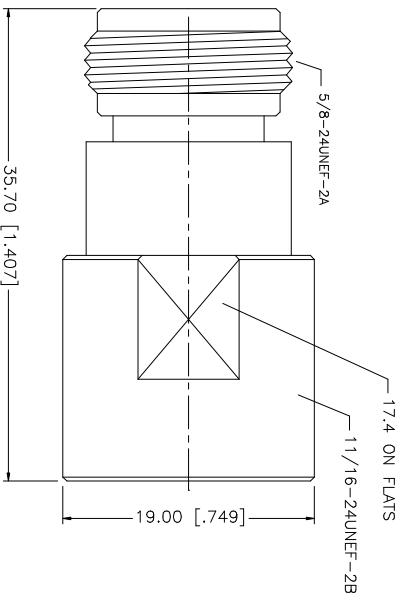
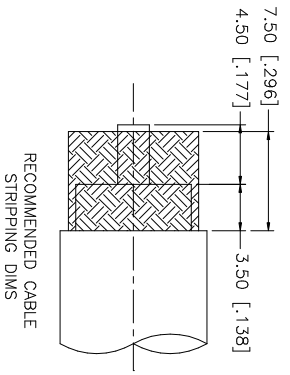


REV.	DATE	DESCRIPTION
NC	04/26/96	INITIAL RELEASE
A	07/29/06	UPDATE DRAWING FORMAT



NOTE:  
1. CRIMPED CONTACT PIN HEX CRIMP SIZE .100"  
OR SOLDER.

QTY	FINISH	MATERIAL	DESCRIPTION
1	NEXCOTE	BRASS	BODY
1	NATURAL	TEFLON	INSULATOR
1	NEXCOTE	BRASS	BRAID CLAMP
1	RED	SILICONE	GASKET
1	NEXCOTE	BRASS	WASHER
1	NEXCOTE	BRASS	NUT
1	GOLD	PHOS. BRONZE	CONTACT PIN

APPROVALS	DATE
DRAWN G.R.S.	07/29/06
CHECKED	
ISSUED	
SHEET 1 OF 1	

UNLESS OTHERWISE SPECIFIED DIMENSIONS ARE IN MILLIMETERS. DIMENSIONS IN [ ] ARE IN INCHES AND FOR CONVERSION TOLERANCE ONLY.
UNLESS OTHERWISE SPECIFIED TOLERANCES FOR MILLIMETERS ARE: 0.5 - 8mm ± 0.20mm 8 - 30mm ± 0.40mm 30 - 120mm ± 0.50mm
UNLESS OTHERWISE SPECIFIED TOLERANCES FOR INCHES ARE: .020 - .315 ± 0.007" .315 - 1.180 ± 0.015" 1.180 - 4.724 ± 0.020"

DO NOT SCALE DRAWING
CAD FILE C:/172/172116.DWG

DWG. NO.	REV.	SIZE	SCALE
172116.DWG	A	A	NA

PART NO.	PART DESCRIPTION
172116	N CLAMP JACK (FOR RG-213/U, 214/U, 8/U CABLE)

**Amphenol Connex**