

2/0 CABLE; M33 GRIP BODY

4/0 CABLE; M40 GRIP BODY

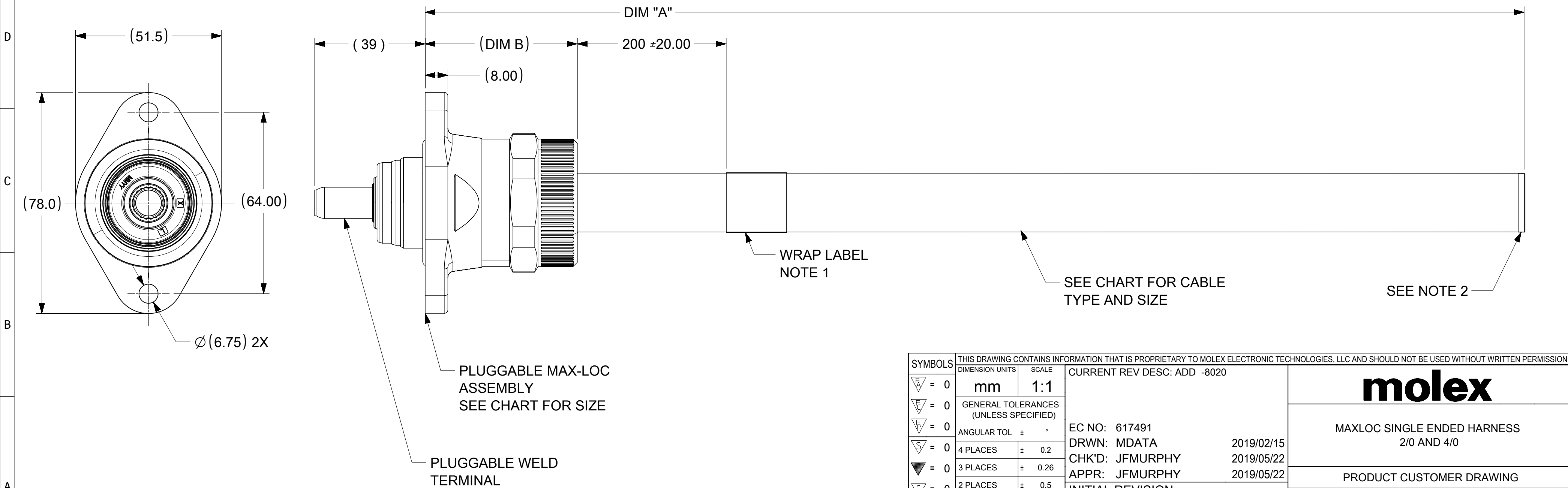
MOLEX P/N	CABLE TYPE	DIM A (MM)	(DIM B) MM
1301998000	CHAMPLAIN 2/0 FX-XLE SS BRAID	500 +20/-0	(51.0)
1301998001		1000 +30/-0	
1301998002		1500 +30/-0	
1301998003		2000 +50/-0	
1301998004		2500 +50/-0	
1301998005		3000 +50/-0	
1301998006		3500 +50/-0	
1301998007		4000 +80/-0	
1301998008		4500 +80/-0	
1301998009		5000 +80/-0	
1301998010		5500 +80/-0	
1301998011		6000 +80/-0	
1301998012		6500 +80/-0	
1301998013		7000 +80/-0	
1301998014		7500 +150/-0	
1301998015		8000 +150/-0	
1301998016		8500 +150/-0	
1301998017		9000 +150/-0	
1301998018		9500 +150/-0	
1301998019		10000 +150/-0	
1301998020	15000 +150/-0		

MOLEX P/N	CABLE TYPE	DIM A (MM)	(DIM B) MM
1301998250	CHAMPLAIN 4/0 FX-XLE SS BRAID	500 +20/-0	(54.0)
1301998251		1000 +30/-0	
1301998252		1500 +30/-0	
1301998253		2000 +50/-0	
1301998254		2500 +50/-0	
1301998255		3000 +50/-0	
1301998256		3500 +50/-0	
1301998257		4000 +80/-0	
1301998258		4500 +80/-0	
1301998259		5000 +80/-0	
1301998260		5500 +80/-0	
1301998261		6000 +80/-0	
1301998262		6500 +80/-0	
1301998263		7000 +80/-0	
1301998264		7500 +150/-0	
1301998265		8000 +150/-0	
1301998266		8500 +150/-0	
1301998267		9000 +150/-0	
1301998268		9500 +150/-0	
1301998269		10000 +150/-0	

NOTES

- 1: WRAP LABEL CONTAINS MOLEX P/N AND MFG INFORMATION
- 2: 12.5 mm SHIELD EXPOSED FOR ELECTRICAL TESTING
- 3: FOR DETAILED INFORMATION ON PRODUCT SEE PRODUCT SPECIFICATION 1723725002
- 4: FOR INSTALLION AND USE INFROMATION SEE APPLICATION SPECIFICATION 1723725002

NAME	MATERIAL
GRIP BODY	ALUMINIUM
SHIELD RING	ALUMINIUM
COMPRESSION NUT	ALUMINIUM
STOP RING	ALUMINIUM
BUSHING GROMMET	HNBR
O-RING	HNBR
MAIN RETAINER	PBT
CLIP RETAINER	PBT
CAP RETAINER	PBT
RETAINING RING	CARBON STEEL
IMPERIUM TERMINAL	COPPER
WRAP LABEL	VINYL LAMINATED
CHAMPLAIN CABLE	SEE CABLE CHART
TAPE	SILICONE



SYMBOLS	THIS DRAWING CONTAINS INFORMATION THAT IS PROPRIETARY TO MOLEX ELECTRONIC TECHNOLOGIES, LLC AND SHOULD NOT BE USED WITHOUT WRITTEN PERMISSION			
DIMENSION UNITS	SCALE	CURRENT REV DESC: ADD -8020		
$\nabla = 0$	mm	1:1		
$\nabla / = 0$	GENERAL TOLERANCES (UNLESS SPECIFIED)			
$\nabla \setminus = 0$	ANGULAR TOL	±	°	
$\nabla \setminus / = 0$	4 PLACES	±	0.2	
$\nabla \setminus \setminus = 0$	3 PLACES	±	0.26	
$\nabla \setminus \setminus / = 0$	2 PLACES	±	0.5	
$\nabla \setminus \setminus \setminus = 0$	1 PLACE	±	0.76	
$\nabla \setminus \setminus \setminus / = 0$	0 PLACES	±	1.0	
$\blacksquare = 0$	DRAFT WHERE APPLICABLE MUST REMAIN WITHIN DIMENSIONS			
$\nabla \setminus \setminus \setminus \setminus = 0$	THIRD ANGLE PROJECTION	DRAWING	SERIES	
		C-SIZE	130199	
	EC NO: 617491	DRWN: MDATA	2019/02/15	
	CHK'D: JFMURPHY	APPR: JFMURPHY	2019/05/22	
	INITIAL REVISION:	DRWN: MDATA	2018/10/18	
		APPR: JFMURPHY	2018/11/20	
	DOCUMENT NUMBER	DOC TYPE	DOC PART	REVISION
	1301998000	PSD	000	A1
	MATERIAL NUMBER	CUSTOMER	SHEET NUMBER	
	SEE CHART	GENERAL MARKET	1 OF 1	

DOCUMENT STATUS	P1	RELEASE DATE	2019/05/22	15:55:00