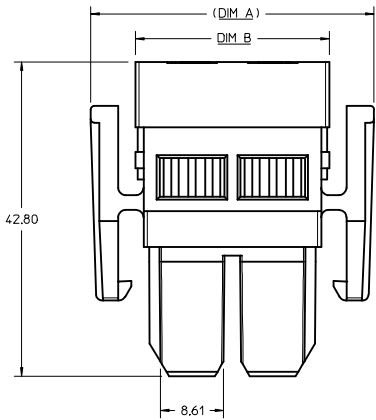
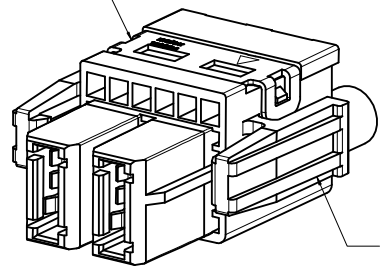


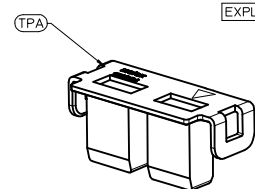
CKT SIZE	PART NUMBER			DM A	DM B	DM C
	WTB MAIN HOUSING	TPA	6 AWG POWER TERMINAL			
2	151034-0012	151034-0022	46819-0013 (2X)	38.60	26.40	24.20
3	151034-0013	151034-0023	46819-0013 (3X)	49.60	37.40	35.20
4	151034-0014	151034-0024	46819-0013 (4X)	60.60	48.40	46.20
5	151034-0015	151034-0025	46819-0013 (5X)	71.60	59.40	57.20
6	151034-0016	151034-0026	46819-0013 (6X)	82.60	70.40	68.20



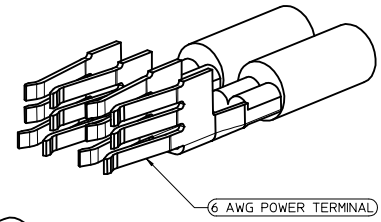
TPA
PART NO: 151034-002*



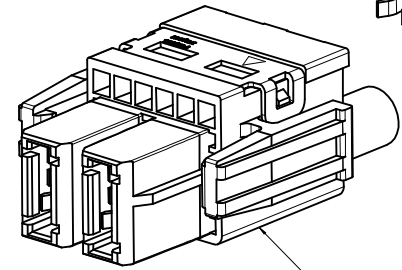
WTB MAIN HOUSING
PART NO: 151034-001*



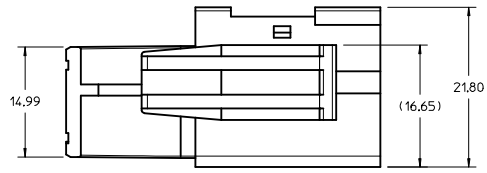
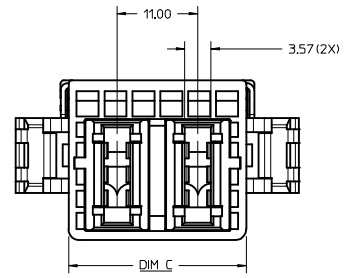
EXPLODED VIEW OF WIRE HARNESS



6 AWG POWER TERMINAL



WTB MAIN HOUSING



- NOTES:
- MATERIAL:
MAIN HOUSING AND TPA: PBT
CRIMP TERMINAL: COPPER ALLOY
 - FINSIHES: TIN OVER NICKEL WITH SELECTIVE GOLD
 - PRODUCT SPEC: PS-151053-0000
 - PACKAGNG: BAG
 - TO BE USED WITH CRIMP PART NUMBER: 46819-0013
MOLEX DRAWING SD-46819-001. CABLE ASSEMBLIES: TBA.
 - PARTS ARE RoHS COMPLIANT.
 - TPA MUST BE USED WITH HOUSING.
 - DO NOT INSERT TPA INTO MAIN HOUSING UNTIL THE CRIMP WITH WIRES HAD BEEN INSERTED.
 - FOR WIRE SIZE: 6AWG.

THIS DESIGN IS BASED ON DESIGN OBJECTIVES AND IS STRICTLY TENTATIVE. IT MAY CHANGE BASED ON RESULTS OF ADDITIONAL DESIGN REVIEWS & VERIFICATIONS.

REVISED PER IEC NO: SZ015-0037 2014/09/25 DRWNG:CGH 2014/10/07 CHKD:KHLIM 2014/11/24 APPR:KHLIM	QUALITY SYMBOLS ∇=0 ∇=0 ∇=0	GENERAL TOLERANCES (UNLESS SPECIFIED) DIMENSION STYLE MM ONLY	DIMENSION STYLE SCALE 3:1	DESIGN UNITS METRIC	THIRD ANGLE PROJECTION
		4 PLACES ± mm INCH 3 PLACES ± --- ± --- 2 PLACES ± 0.25 ± --- 1 PLACE ± --- ± --- 0 PLACE ± --- ± ---	DRAWN BY CGOH DATE 2014/04/23	TITLE GUARDIAN II CRIMP RECEPTACLE HOUSING 2 - 6 CKTS	APPROVED BY KHLIM DATE 2014/11/24
ANGULAR ± 1 ° DRAFT WHERE APPLICABLE MUST REMAIN WITHIN DIMENSIONS		SHEET NO. 1 OF 1			