

PART NUMBER	REV	TERMINATOR	FEED TYPE	DESCRIPTION
1530548-1	B	LEADMAKER	MECH POST FEED	CUTS CARRIER
1530548-2	B	BENCH	MECH PRE FEED	CUTS CARRIER
1530548-6	B	LEADMAKER	MECH POST FEED	CONTINUOUS CARRIER
7-1530548-1	B	LEADMAKER	MECH POST FEED	-1 AND SPARE PARTS
7-1530548-2	B	BENCH	MECH PRE FEED	-2 AND SPARE PARTS
7-1530548-6	B	LEADMAKER	MECH POST FEED	-6 AND SPARE PARTS
7-1530548-7	A	-	-	SPARE PARTS KIT

CRIMP DATA    TE TERMINAL    TE CRIMP SPECS

TERMINAL NAME: POSITIVE LOCK RECEPTACLE, MKII

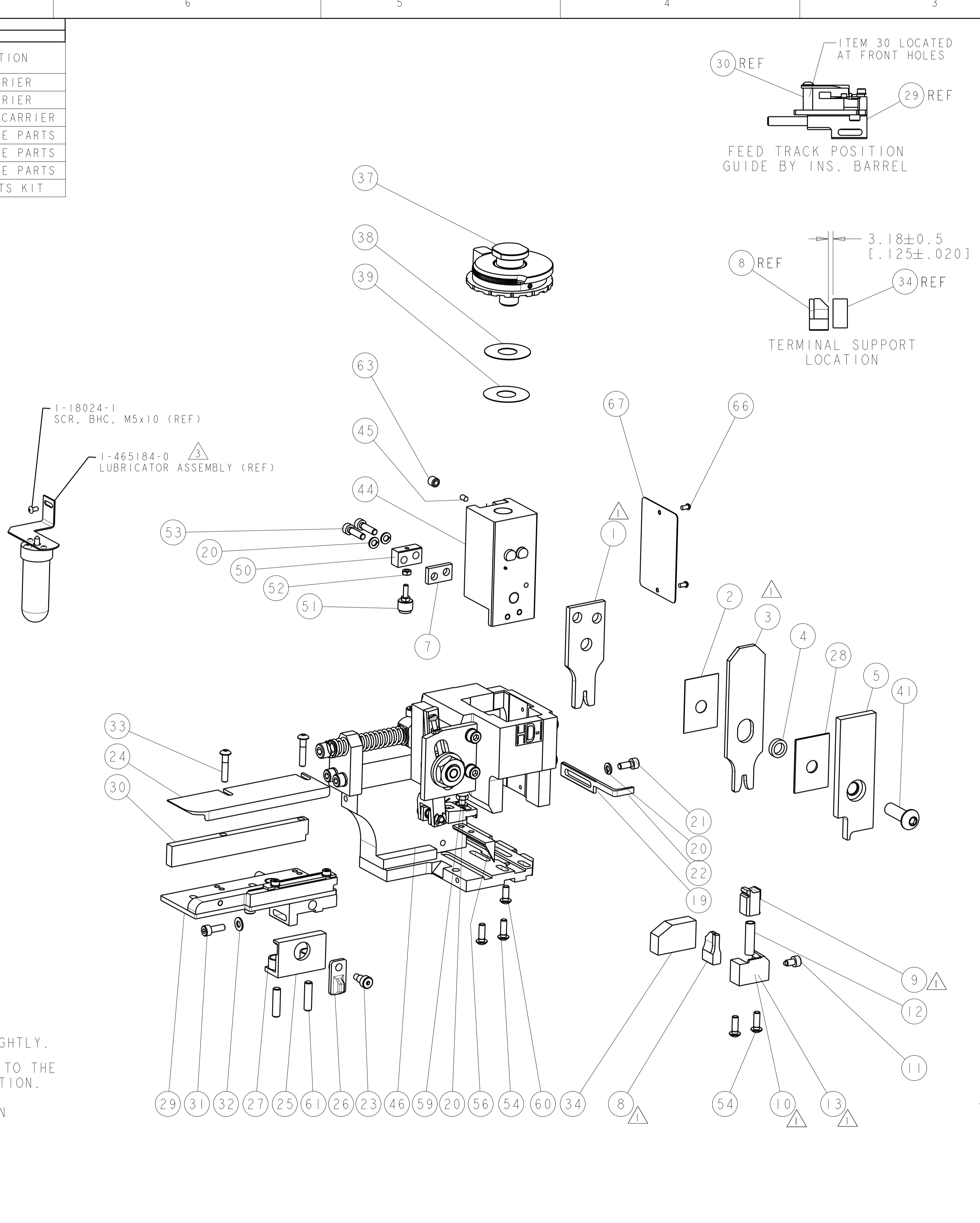
CRIMP	SIZE	TYPE	RANGE
WIRE	2.29 [.090 IN]	F	0.50mm-1.50mm
INSUL	3.56 [.140 IN]	F	Ø 2.10 - 2.90 [.083-.114 IN]

WIRE STRIP LENGTH: 4.43-4.81 [.174-.189 IN]    APPL INSTRUCTIONS: 408-8322 & 408-8490

TERMINAL APPL SPEC: 114-3118    FEED: 19.05 [.750 IN]

TERMINALS APPLIED

WIRE SIZE	CRIMP HEIGHT	REF SETTING
1.50mm <sup>2</sup>	1.65 ± 0.05 [.065 ± .002 IN]	A9
1.00mm <sup>2</sup>	1.47 ± 0.05 [.058 ± .002 IN]	C3
0.75mm <sup>2</sup>	1.35 ± 0.05 [.053 ± .002 IN]	D3
0.50mm <sup>2</sup>	1.27 ± 0.05 [.050 ± .002 IN]	E2

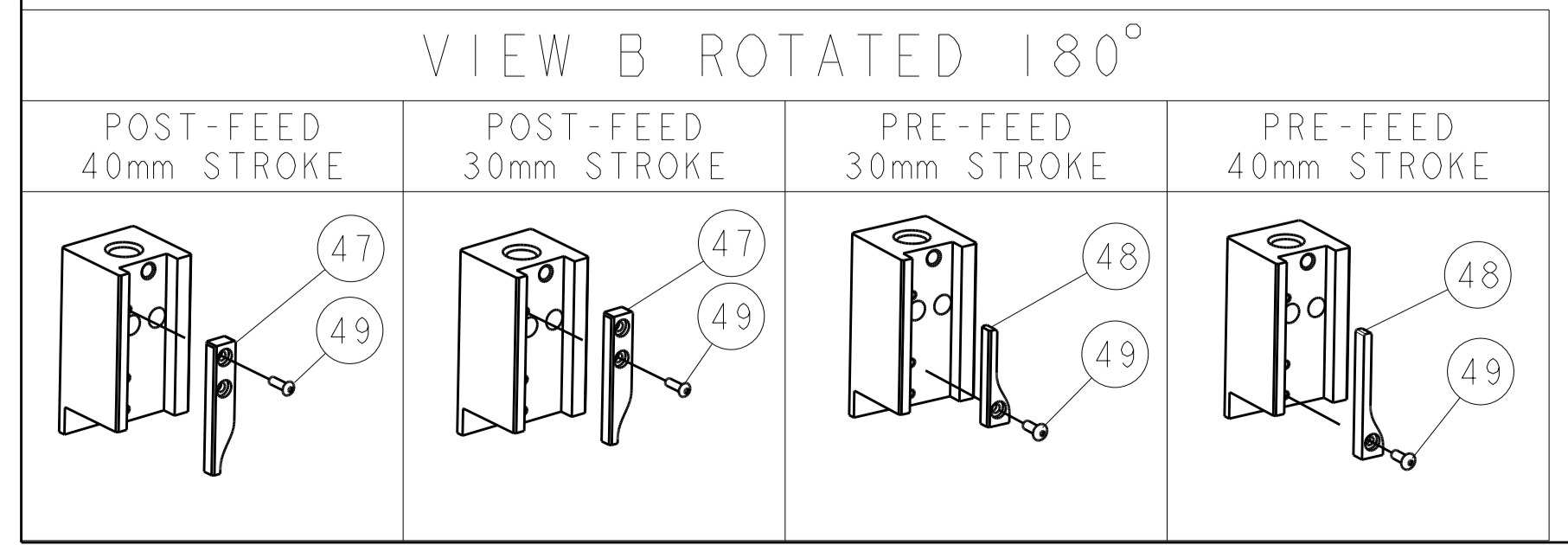


SET UP GAGE  
458637-3

LOC	DIST	REV	DATE	BY	CHK
A	66	A	06OCT2011	RK	GB
		B	27JUN2012	MY	GB

QTY	UNIT	DESCRIPTION	ITEM NO	
-	1	1338705-3	DOCUMENTATION PACKAGE	71
-	1	461264-5	PLATE, IDENTIFICATION	67
-	2	21017-2	SCREW, DRIVE	66
-	1	3-18031-0	SCR, SET, CUP POINT M6 X 6.0	63
-	2	2-18032-5	SCR, SET, FLT POINT M5 X 20.0	61
-	1	18024-7	SCR, BTN SKT HD CAP (M4 X 10.0)	60
-	1	5-18022-2	SCR, HEX HD CAP M4 X 8.0	59
-	1	1338685-1	PAWL, FEED	56
-	4	4-18024-8	SCR, BTN SKT HD CAP (M4 X 12.0)	54
-	2	2-18023-3	SCR, SKT HD CAP M4 X 16.0	53
-	1	18030-1	NUT, HEX, REG M3	52
-	1	811242-6	BUMPER, HOLD DOWN	51
-	1	690753-2	SPACER, TONKER	50
-	1	18024-3	SCR, BTN SKT HD CAP (M3 X 10.0)	49
-	1	1338675-1	CAM, UNIVERSAL PRE FEED	48
-	1	1338676-1	CAM, UNIVERSAL POST-FEED	47
-	1	1320999-3	APPLICATOR SUBASSEMBLY, HDI	46
-	1	690191-1	PLUG, NYLON	45
-	1	1633724-1	RAM, (SIDE FEED)	44
-	1	2-18024-6	SCR, BTN SKT HD CAP (M8 X 25.0)	41
-	1	690125-1	SHIM SUB-ASSY	39
-	1	1-469367-0	SHIM	38
-	1	879103-2	FINE ADJUST HEAD ASSEMBLY	37
-	1	1752356-1	SUPPORT, TERMINAL	34
-	2	2-18024-0	SCR, BTN SKT HD CAP (M4 X 20.0)	33
-	1	18027-2	WASHER, FLAT, REG M4	32
-	1	1-18023-2	SCR, SKT HD CAP M4 X 12.0	31
-	1	1-1320908-0	SPACER, STRIP GUIDE	30
-	1	1633073-1	STRIP GUIDE ASSEMBLY	29
-	1	1-455888-0	SPACER, CRIMPER	28
-	2	2-22284-0	SPRING, COMPRESSION	27
-	1	356835-1	LEVER, DRAG RELEASE	26
-	1	240792-1	DRAG, TERMINAL	25
-	1	1320928-2	STRIP GUIDE	24
-	1	980371-4	SCR, SKT HD SHLDR 5.0 DIA X 6.0	23
-	1	690472-2	STRIPPER	22
-	1	1-18023-1	SCR, SKT HD CAP M4 X 10.0	21
-	4	4-18025-2	WASHER, SPRG LOCK, REG M4	20
-	1	690472-1	STRIPPER	19
-	1	1338684-2	SHEAR HOLDER, FRONT	13
-	1	3-22280-3	SPRING, COMPRESSION	12
-	1	356885-5	STOP, SHEAR	11
-	1	1-1320921-0	SHEAR HOLDER, FRONT, CUT	10
-	1	462006-6	FLOATING SHEAR, FRONT	9
-	1	4-1633620-5	ANVIL, COMBINATION	8
-	1	240641-8	SPACER	7
-	1	2-455889-0	DEPRESSOR, SHEAR	5
-	1	238011-2	BLOCK, CRIMPER SPACER	4
-	1	1-456134-4	CRIMPER, INSULATION F PREMIUM	3
-	1	455888-3	SPACER, CRIMPER	2
-	1	1-456406-6	CRIMPER, WIRE PREMIUM	1

- △ RECOMMENDED SPARE PARTS.
- 2. GREASE RAM, CAM, CAM FOLLOWER AND FEED ROD LIGHTLY.
- △ CERTAIN TERMINALS REQUIRE LUBRICATION. REFER TO THE APPLICATOR INSTRUCTION SHEET FOR MORE INFORMATION.
- 4. LUBRICATE DAILY PER THE APPLICATOR INSTRUCTION SHEET SUPPLIED WITH THE APPLICATOR.



**\* WARNING**  
ON INSTALLATION, SET WIRE DISC TO LARGEST WIRE SIZE SETTING. USE OF SETTINGS BELOW MIN. REQUIRED CRIMP HEIGHT SETTING WILL CAUSE DAMAGE TO CRIMP TOOLING.

DIMENSIONS	TOLERANCES UNLESS OTHERWISE SPECIFIED:	APPROVED	DATE	NAME
mm [IN]	0 PLC ± 1 PLC ± 3 PLC ± 4 PLC ± ANGLES ±	BOB HIGMAN G. BAILEY I. CRUZ	16AUG2011 16AUG2011 16AUG2011	BOB HIGMAN G. BAILEY I. CRUZ
MATERIAL	FINISH	PRODUCT SPEC	APPLICATION SPEC	See Table
Customer Accessible Production Drawing	SCALE 3:5	SHEET 1 of 1	REV B	