

THIS DRAWING IS UNPUBLISHED.

RELEASED FOR PUBLICATION

20

© COPYRIGHT 20

BY -

ALL RIGHTS RESERVED.

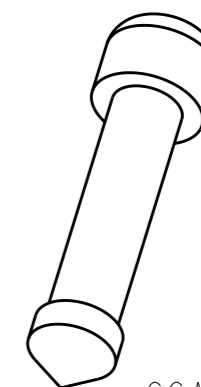
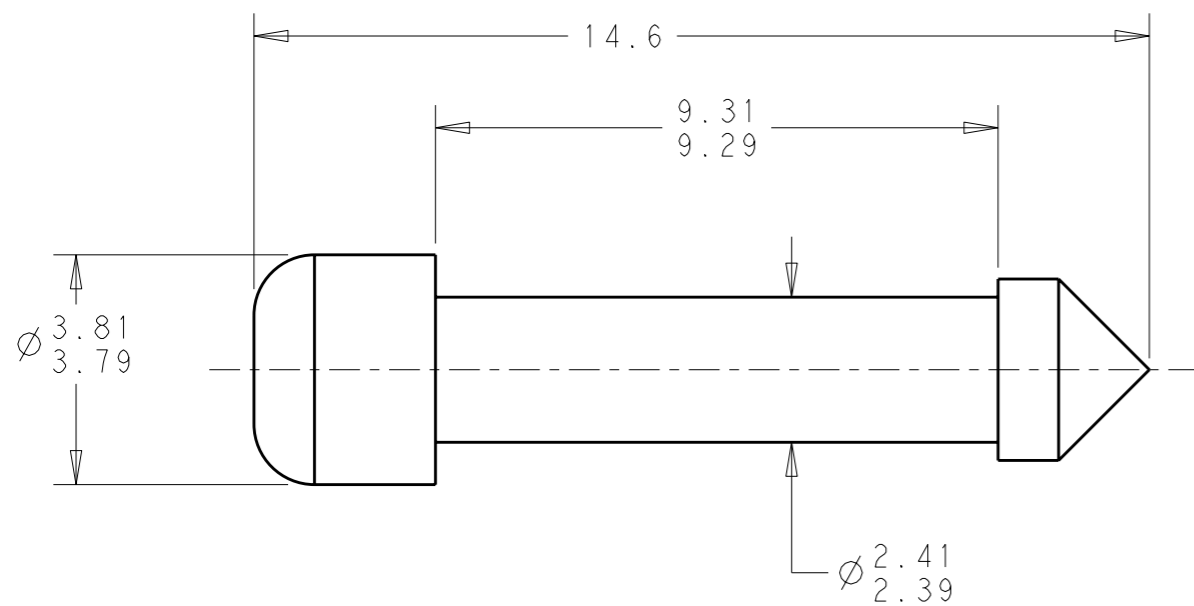
LOC
HK

DIST
00

REVISIONS

P	LTR	DESCRIPTION	DATE	DWN	APVD
	B2	REVISED PER ECO-11-024023	01DEC2011	DD	RL

1. MAXIMUM ALLOWABLE FLASH IS 0.127mm. MAXIMUM EJECTOR PIN DEPRESSION IS 0.127mm.
2. PLUGS ARE FOR USE WITH TE 1mm SERIES SEALED SOCKET/HARNESS CONNECTORS. SEE TE DRAWING #1456016.
3. TE PART NUMBER: 4-1437292-3.
4. COLOR: NATURAL



SCALE 4:1

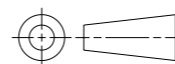
4-1437292-3

PART NUMBER

THIS DRAWING IS A CONTROLLED DOCUMENT.

DIMENSIONS:

mm



TOLERANCES UNLESS OTHERWISE SPECIFIED:

0 PLC	±	-
1 PLC	±	.3
2 PLC	±	.20
3 PLC	±	-
4 PLC	±	-
ANGLES	±	2

MATERIAL

-

FINISH

-

DWN J. REMOLL 07-03-01

CHK J. REMOLL 07-03-01

APVD J. REMOLL 07-03-01

PRODUCT SPEC

APPLICATION SPEC

WEIGHT

-

NAME



TE Connectivity

WIRE SEAL PLUG
1mm SEALED HARNESS
CONNECTOR

SIZE

CAGE CODE

DRAWING NO

RESTRICTED TO

A3

00779

C-1456273

-

CUSTOMER DRAWING

SCALE 8:1

SHEET 1 OF 1

REV B2