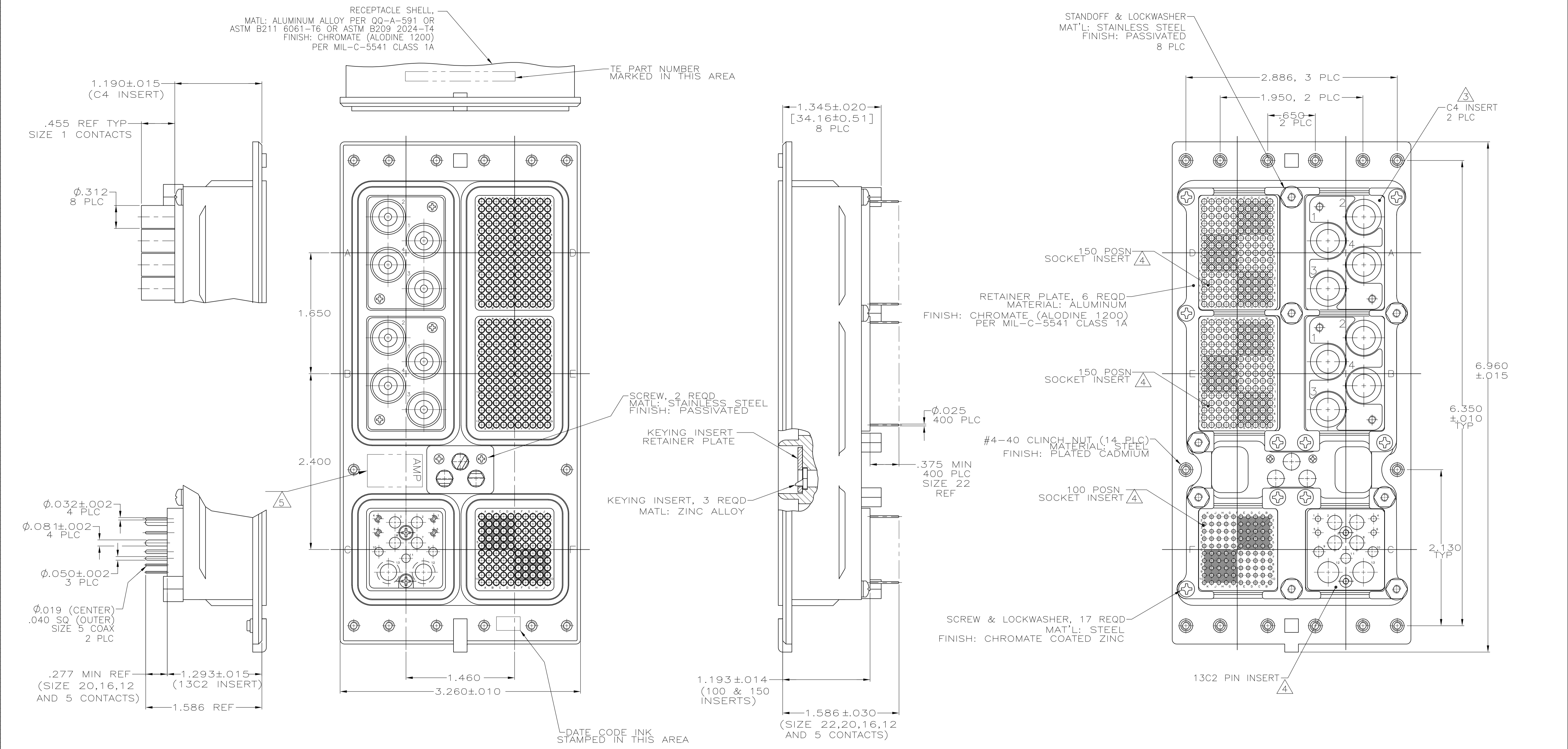


REVISIONS				
P	LTR	DESCRIPTION	DATE	APPV
B	REV PER ECO	17-007041	5-16-17	CT EO



- FOLLOWING CONTACTS ARE INCLUDED AND LOADED:  
 SIZE 22: AMP P/N 211431-6; QTY=400  
 SIZE 20: AMP P/N 446546-3; QTY=4  
 SIZE 16: AMP P/N 446547-3; QTY=3  
 SIZE 12: AMP P/N 446548-3; QTY=4  
 SIZE 5 COAX: 447335-2; QTY=2  
 SIZE 1 COAX WITH OSP ADAPTER: 1218713-1; QTY=8
- POLARIZING KEYS ARE INSTALLED IN POSITION 40.
- INSERT MATERIAL: DIE CAST ALUMINUM PER ASTM-B-85. INSERT FINISH: CHROMATE PER MIL-C-5541
- INSERT MATERIAL: GLASS EPOXY OR POLYPHENYLENE SULFIDE PER MIL-M-24519.
- TE LOGO APPEARS IN THIS APPROXIMATE LOCATION ON MACHINED FROM BILLET SHELLS.
- ASSEMBLY SHOWN WITH DIE CAST SHELL. ASSEMBLIES WITH MACHINED SHELLS MAY VARY SLIGHTLY IN APPEARANCE.

1757225-1  
PART NUMBER

THIS DRAWING IS A CONTROLLED DOCUMENT.		DIN C.C.THOMAS 7-9-04	STE TE Connectivity	
DIMENSIONS: INCHES		CHK K.HOGAN 7-9-04	NAME	
TOLERANCES UNLESS OTHERWISE SPECIFIED:		APPV S.GLATFELTER 7-9-04	RECEPTACLE ASSY, SIZE 3, FRONT RELEASE, TCAS	
0 PLC ± -	1 PLC ± -	PRODUCT SPEC		
2 PLC ± -	3 PLC ± -	APPLICATION SPEC		
4 PLC ± -	ANGLES ± -	SIZE CAGE CODE DRAWING NO		
MATERIAL SEE CALLOUTS	FINISH SEE CALLOUTS	WEIGHT 0.000000	A1 00779	RESTRICTED TO
CUSTOMER DRAWING		SCALE 1:1	SHEET 1 OF 1	REV B