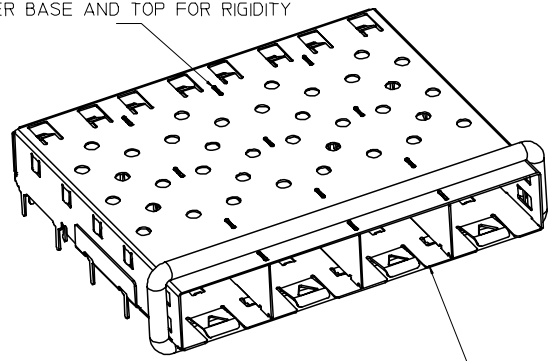
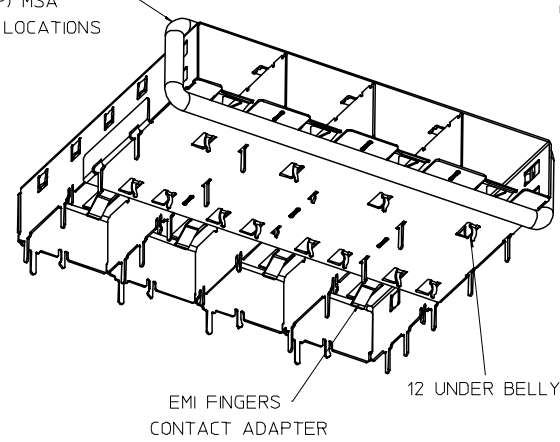
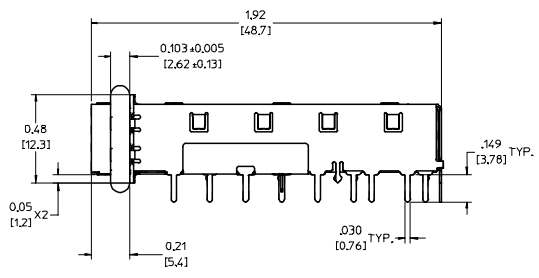
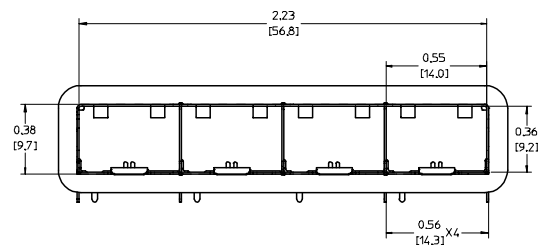


360° ELASTOMER GASKET COMPLIES WITH (SFP) MSA BOARD AND BEZEL LOCATIONS

INNER WALL TABS ARE COINED OVER BASE AND TOP FOR RIGIDITY



DIMENSIONS OF EACH INNER CAGE DESIGNED TO FUNCTION WITH SMALL FORM-FACTOR PLUGGABLE (SFP) TRANSCEIVER



NOTES:

- SOLDER POSTS .145' LONG -
- .062 [1.57] MINIMUM PCB THICKNESS FOR SINGLE SIDED USE.
- .150 [3.81] MINIMUM PCB THICKNESS FOR BELLY TO BELLY USE.
- REFER TO DOCUMENT SD-74728-410 FOR DETAILS ON PCB LAYOUT, BOARD POSITIONING, AND BEZEL OPENING.
- ADJACENT PORTS ARE SPACED .561 [14.25] APART.
- MATERIAL: COPPER ALLOY.

EC NO: USY2005-0037 DRAWN: K SIMONSO 2004/10/09 CHKD: BRUSSELL 2004/10/09 APPR: BRUSSELL 2004/10/13 REV: A	QUALITY SYMBOLS	GENERAL TOLERANCES (UNLESS SPECIFIED)	SCALE 3:1	DESIGN UNITS METRIC	THIRD ANGLE PROJECTION	REVISE ON CAD ONLY
	0.0 0.0	4 PLACES ± --- ± --- 3 PLACES ± --- ± .005 2 PLACES ± 0.13 ± .01 1 PLACE ± 0.25 ± ---	DIMENSION STYLE IN/MM DRAWN BY DATE K SIMONSO 2004/10/09	TITLE		
		ANGULAR ± 1°	CHECKED BY DATE	1X4 SFP CAGE ASSY, W/ 0.103 GASKET, SOLDER POST, F/ LIGHT PIPES		
		DRAFT WHERE APPLICABLE MUST REMAIN WITHIN DIMENSIONS	APPROVED BY DATE	MATERIAL NO.	DOCUMENT NO.	SHEET NO.
			BRUSSELL 2004/10/09	747280412	SD-74728-412	1 OF 2
THIS DRAWING CONTAINS INFORMATION THAT IS PROPRIETARY TO MOLEX INCORPORATED AND SHOULD NOT BE USED WITHOUT WRITTEN PERMISSION						

20 | 19 | 18 | 17 | 16 | 15 | 14 | 13 | 12 | 11 | 74728 | 9 | 8 | 7 | 6 | 5 | 4 | 3 | 2 | 1

DATE	REV	CHANGES	COMMENTS
2004/10/09	A	INITIAL RELEASE	N/A

EC NO: USY2005-0037 P: DRW:KSIMONSO 2004/10/09 CHKD:BRUSSELL 2004/10/09 APPR:BRUSSELL 2004/10/13 REV: A	QUALITY SYMBOLS	GENERAL TOLERANCES (UNLESS SPECIFIED)	SCALE 1:1	DESIGN UNITS METRIC	THIRD ANGLE PROJECTION	REVISE ON CAD ONLY																					
	▽-0	<table border="1"> <thead> <tr> <th></th> <th>mm</th> <th>INCH</th> </tr> </thead> <tbody> <tr> <td>4 PLACES</td> <td>±.0005</td> <td>±.0002</td> </tr> <tr> <td>3 PLACES</td> <td>±.001</td> <td>±.0004</td> </tr> <tr> <td>2 PLACES</td> <td>±.002</td> <td>±.0008</td> </tr> <tr> <td>1 PLACE</td> <td>±.005</td> <td>±.0010</td> </tr> </tbody> </table>		mm	INCH	4 PLACES	±.0005	±.0002	3 PLACES	±.001	±.0004	2 PLACES	±.002	±.0008	1 PLACE	±.005	±.0010	<table border="1"> <thead> <tr> <th colspan="2">DIMENSION STYLE</th> </tr> <tr> <th>IN/MM</th> <th>DATE</th> </tr> </thead> <tbody> <tr> <td>IN/MM</td> <td>2004/10/09</td> </tr> </tbody> </table>	DIMENSION STYLE		IN/MM	DATE	IN/MM	2004/10/09	TITLE: 1X4 SFP CAGE ASSY, W/ 0.103 GASKET, SOLDER POST, F/ LIGHT PIPES		
		mm	INCH																								
	4 PLACES	±.0005	±.0002																								
3 PLACES	±.001	±.0004																									
2 PLACES	±.002	±.0008																									
1 PLACE	±.005	±.0010																									
DIMENSION STYLE																											
IN/MM	DATE																										
IN/MM	2004/10/09																										
▽0	ANGULAR ± 1°	DRAFT WHERE APPLICABLE MUST REMAIN WITHIN DIMENSIONS	DRAWN BY: KSIMONSO CHECKED BY: BRUSSELL APPROVED BY: BRUSSELL	DATE: 2004/10/09 DATE: 2004/10/09 DATE: 2004/10/09	MATERIAL NO. 747280412 DOCUMENT NO. SD-74728-412	SHEET NO. 2 OF 2																					



THIS DRAWING CONTAINS INFORMATION THAT IS PROPRIETARY TO MOLEX INCORPORATED AND SHOULD NOT BE USED WITHOUT WRITTEN PERMISSION

19 | 18 | 17 | 16 | 15 | 14 | 13 | 12 | 11 | 10 | 9 | 8 | 7 | 6 | 5 | 4 | 3 | 2 | 1